

AZUREAN
marbella

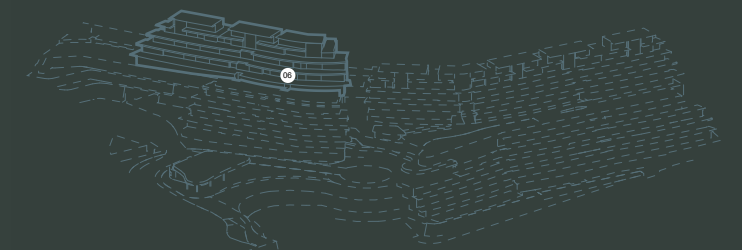
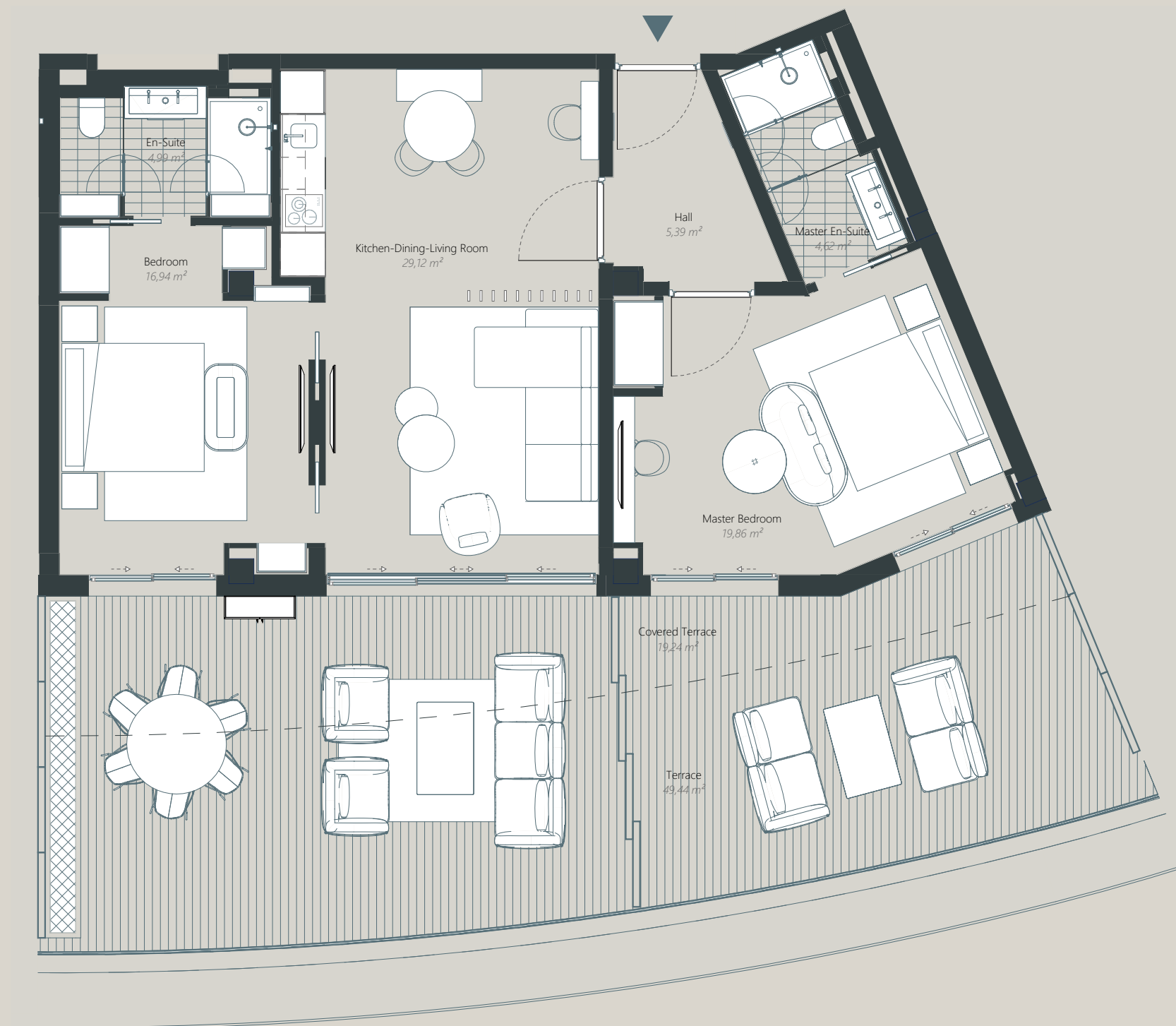


apartment B1-06

BUILDING 1
FLOOR 0

BEDROOMS 2
TYPE DOUBLE

Total Area	162,82 m ²
Interior Area	94,94 m ²
Exterior Area	67,88 m ²
Covered Terrace Area	18,96 m ²



The information on this plan is merely indicative and has no contractual value. The surface areas shown are approximate. The internal distribution of the rooms may undergo some alterations due to technical imperatives.

ENERGY CERTIFICATION PENDING COMPLETION

