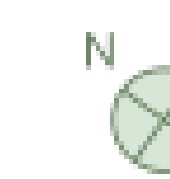


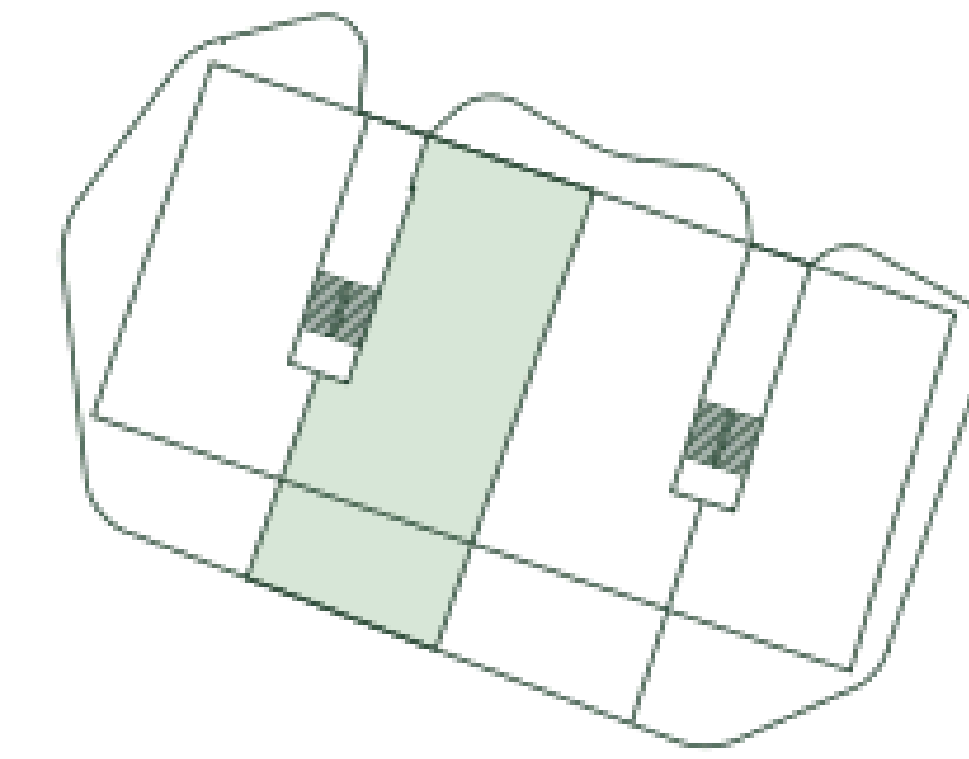
CHRISTIE'S
INTERNATIONAL REAL ESTATE
———— COSTA DEL SOL ————

Floor plans Ref 2978



Not to scale 

Developed by
Lane Development
Partners S.L.



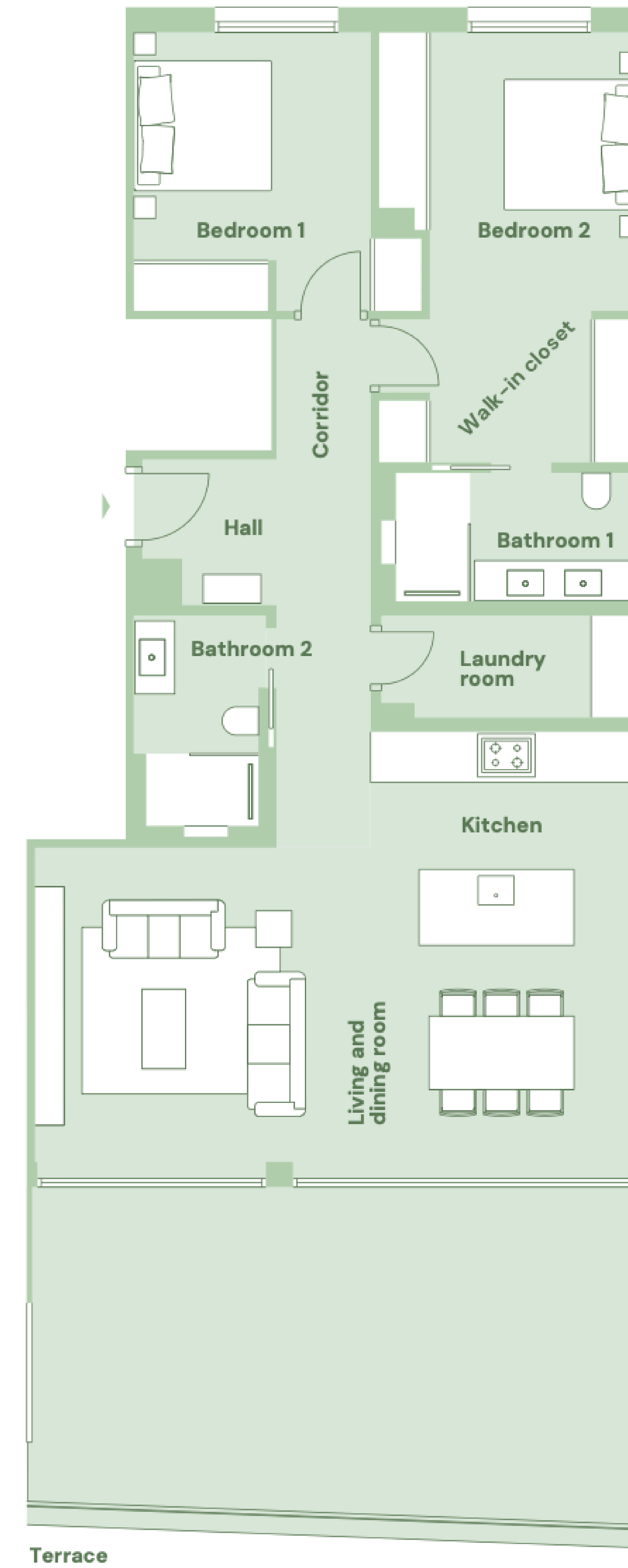
Floor — GF
2 Bedrooms
2 Bathrooms

Net living area — 106.65 m²
Gross living area — 124.65 m²
Total terrace — 41.55 m²
Covered terrace — 26.20 m²
Uncovered terrace — 15.35 m²

Garage — 2
External storage room — 18.05 m²

Hall and
Corridor — 13.00 m²
Living and
Dining room — 33.15 m²
Kitchen — 11.00 m²
Bedroom 1 — 13.20 m²
Bedroom 2 — 20.25 m²
Bathroom 1 — 6.00 m²
Bathroom 2 — 5.10 m²
Laundry room — 4.95 m²

Terrace — 41.55 m²



This document is for information purposes only and may be subject to change due to the technical requirements of the project. All furniture, including that in the kitchen, is merely indicative; door swings and the distribution of sanitary appliances are not binding. The surfaces indicated are approximate and may be subject to change for technical reasons during the execution of the project.

CHRISTIE'S
INTERNATIONAL REAL ESTATE
———— COSTA DEL SOL ————

Where *Luxury* lives

Velázquez, 1, 29602 Marbella, España
+34 951 122 313 | marbella@cire-costadelsol.com

Paseo de Reding, 25, 29016 Málaga, España
+34 951 122 312 | malaga@cire-costadelsol.com