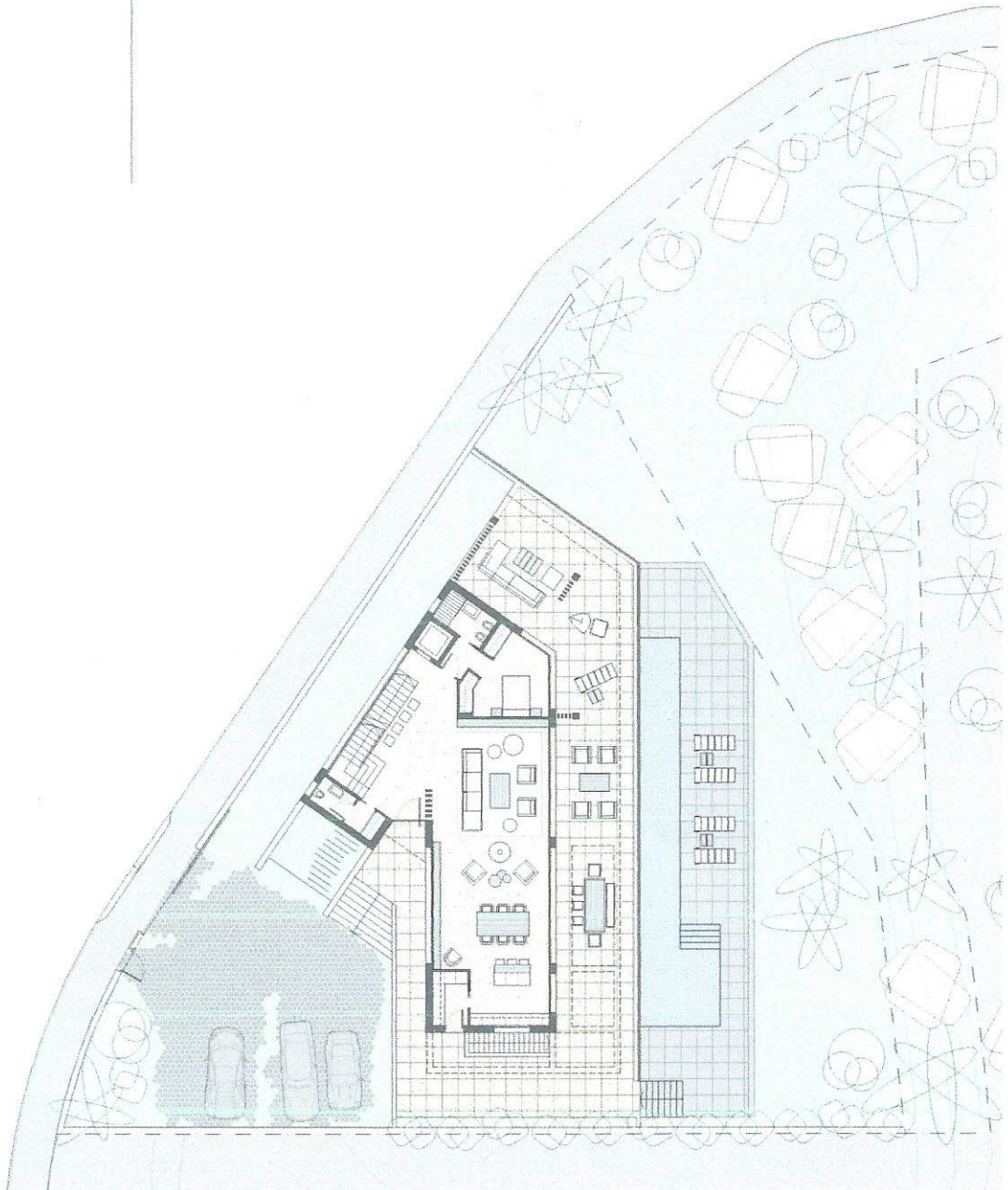


VILLA IN LAS LOMAS DEL MARBELLA CLUB
BEST AND UNIQUE LOCATION IN MARBELLA GOLDEN MILE

PLOT PLAN

PLOT AREA: 1.011,33 m²



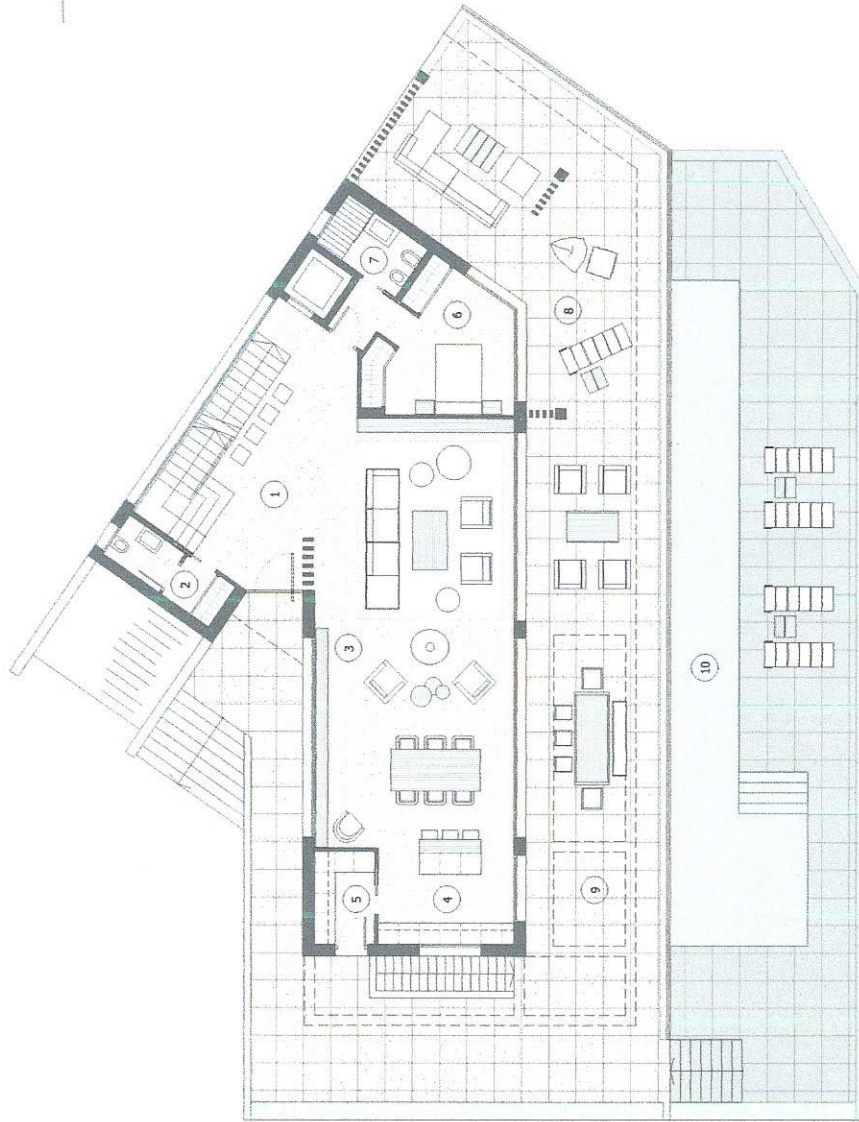
VILLA IN LAS LOMAS DEL MARBELLA CLUB

BEST AND UNIQUE LOCATION IN MARBELLA GOLDEN MILE

GROUND FLOOR

GROUND FLOOR AREA: 171,25 m²
COV. TERRACE AREA: 70,14 m²
TERRACE AREA: 59,55 m²

1. Hall
2. Toilet
3. Living - dining room
4. Kitchen
5. Pantry
6. Bedroom
7. Bathroom
8. Covered Terrace
9. Terrace
10. Pool



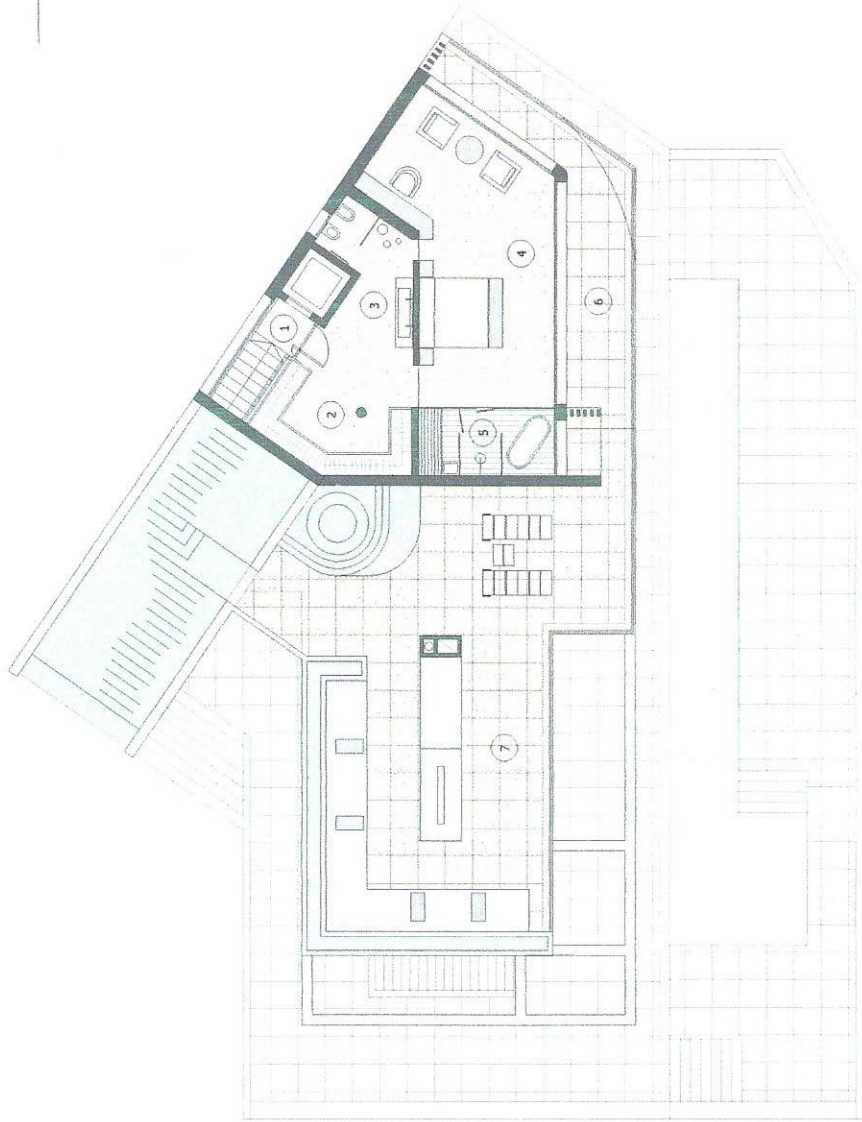
VILLA IN LAS LOMAS DEL MARBELLA CLUB

BEST AND UNIQUE LOCATION IN MARBELLA GOLDEN MILE

TOP FLOOR

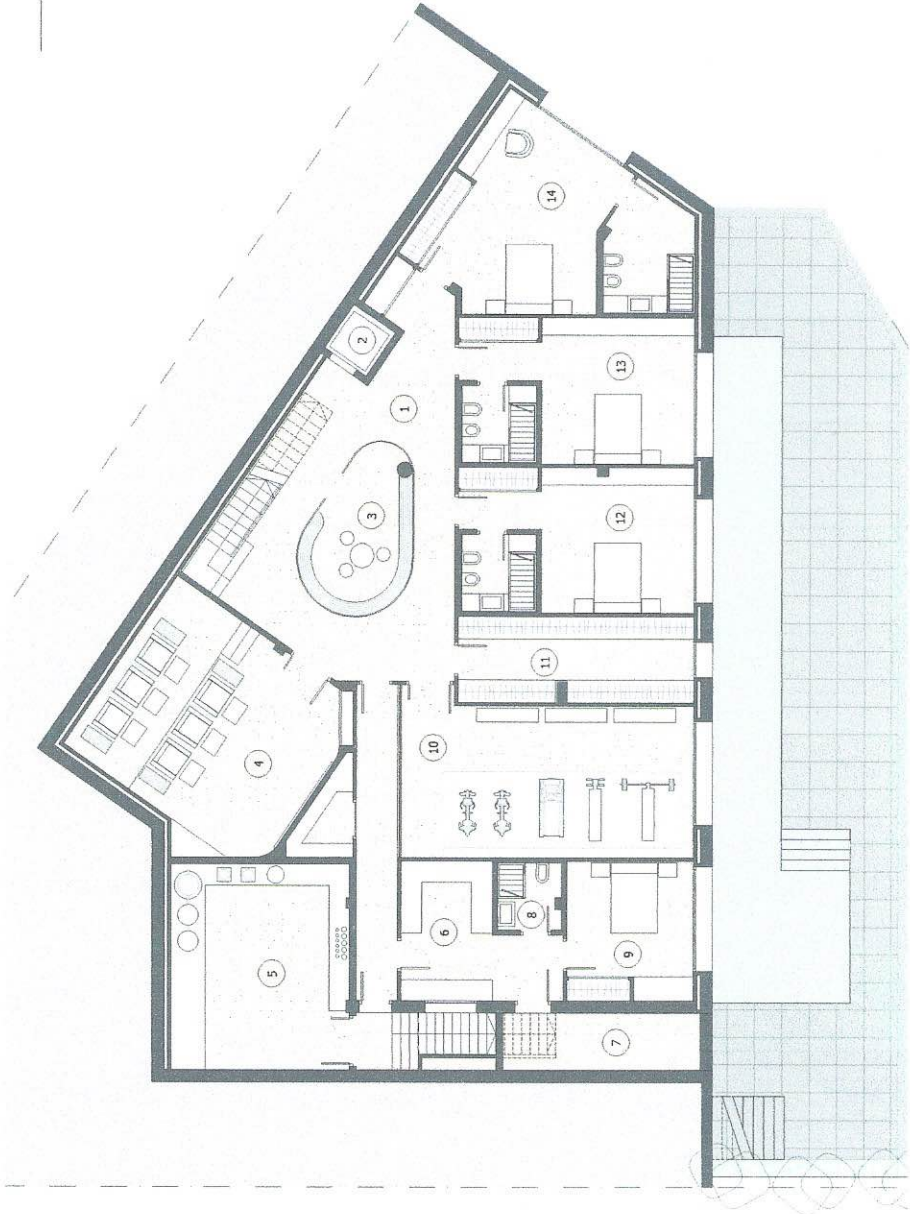
TOP FLOOR AREA: 88,65 m²
COV. TERRACE AREA: 23,84 m²
TERRACE AREA: 115,01 m²

1. Landing
2. Dressing
3. Bathroom
4. Master bedroom
5. Spa
6. Covered Terrace
7. Terrace



VILLA IN LAS LOMAS DEL MARBELLA CLUB

BEST AND UNIQUE LOCATION IN MARBELLA GOLDEN MILE



BASEMENT FLOOR

BASEMENT AREA: 401,76 m²

1. Hall
2. Lift
3. Wine cellar
4. Cinema room
5. Machine room
6. Laundry room
7. Pool machine room
8. Bathroom
9. Service bedroom
10. Gym
11. Dressing room
12. Bedroom en-suite 1
13. Bedroom en-suite 2
14. Bedroom en-suite 3

VILLA IN LAS LOMAS DEL MARBELLA CLUB
BEST AND UNIQUE LOCATION IN MARBELLA GOLDEN MILE

ROOF FLOOR

