

CERQUILLA 54B

NUEVA ANDALUCÍA



STUNNING MODERN VILLA WITH A PRIME LOCATION IN LA CERQUILLA

Cerquilla 54B is a modern villa in the prime residential area of La Cerquilla, offering an exceptional blend of luxury and convenience. Situated in Marbella's sought-after Golf Valley, the property enjoys sea and mountain views while being just minutes from all key amenities.

Beds: 5 | **Baths:** 5+1 | **Plot:** 1.142m² | **Built:** 310m² | **Parking:** 2 | **Orientation:** S/E



The villa's contemporary design maximises natural light, with floor-to-ceiling glass sliding doors seamlessly connecting the indoor and outdoor living spaces. An outdoor kitchenette with a built-in BBQ adds to the property's appeal, making it an ideal space for hosting gatherings.

Designed for year-round enjoyment, the outdoor spaces are tailored for relaxation and entertainment. Ample terraces provide alfresco dining and chill-out areas, while the private pool is complemented by a stylish pergola at its end.





The open-plan layout enhances both functionality and sophistication, with a sleek modern kitchen featuring a central marble island and state-of-the-art integrated appliances.







The floating staircase leads to the first floor, where five well-appointed bedrooms ensure both comfort and privacy. The master suite is particularly generous, with direct terrace access and a luxurious en-suite bathroom that captures the essence of high-end living.









The villa also features an impressive entertainment level, complete with a custom bar and television area, perfect for socialising. Thoughtful lighting integrations bring the property to life at night, transforming the ambience both indoors and across the covered terraces.

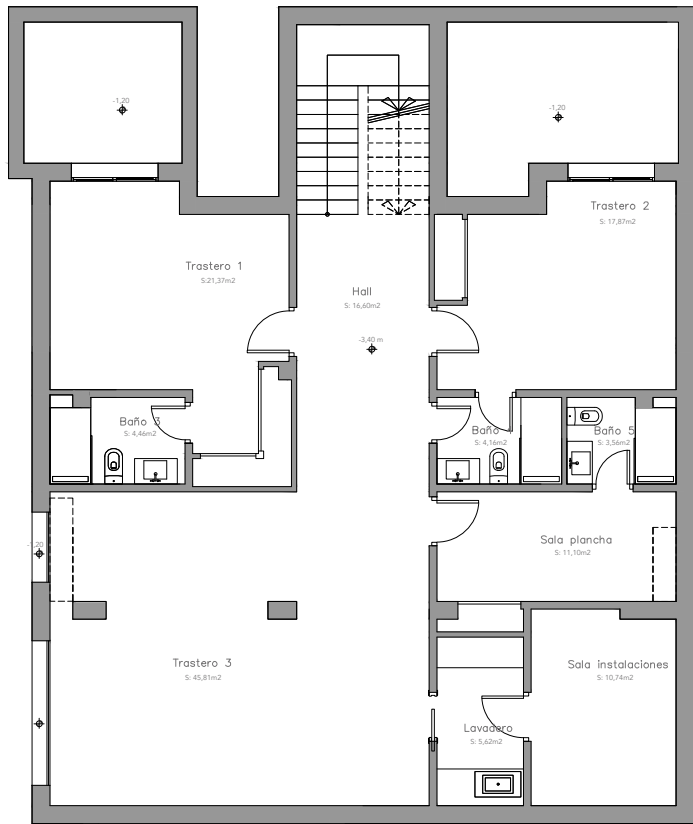




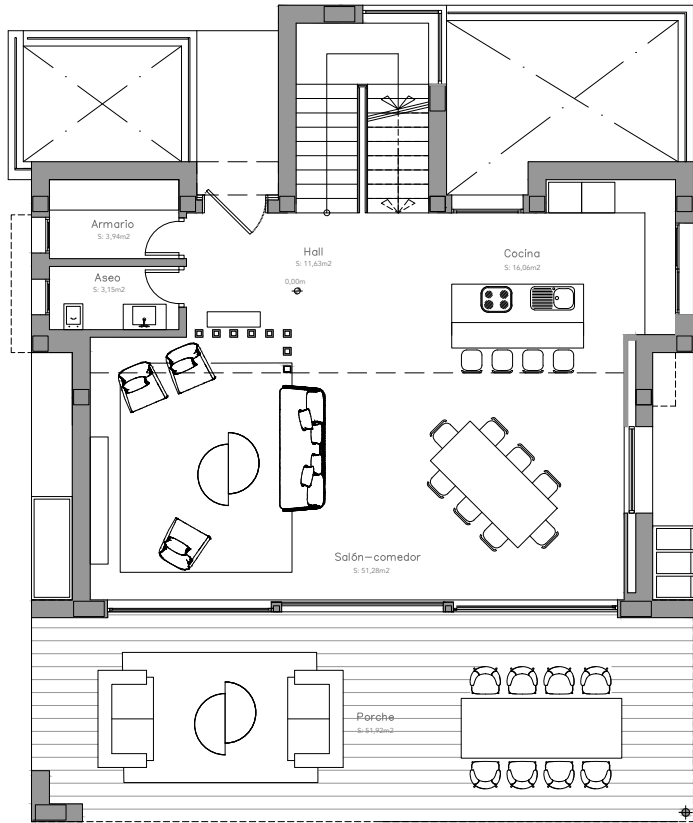


A private driveway leads to a secure entrance and carport, ensuring both privacy and exclusivity. Cerquilla 54B is a refined choice for those seeking a modern home in one of Marbella's most desirable locations.

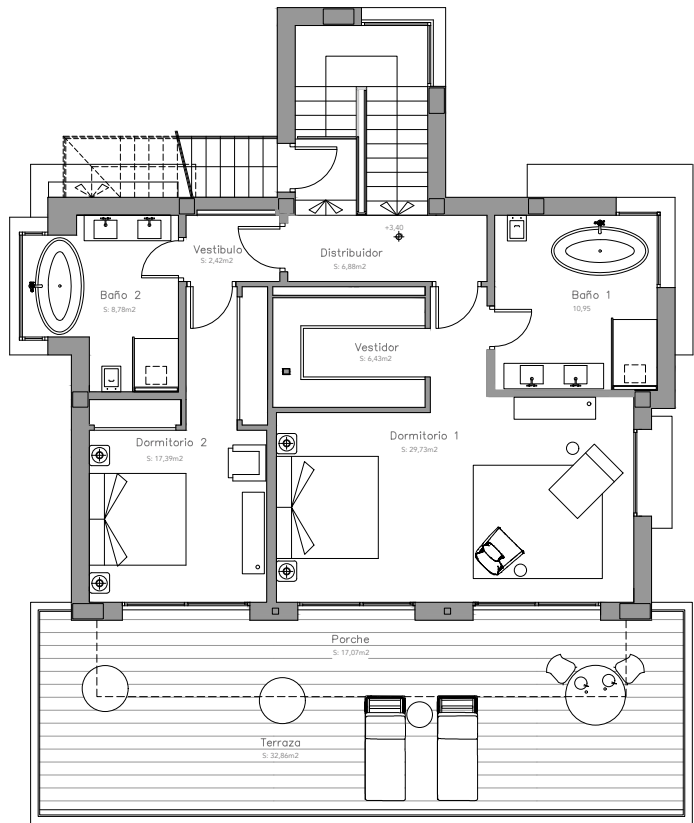
LOWER LEVEL



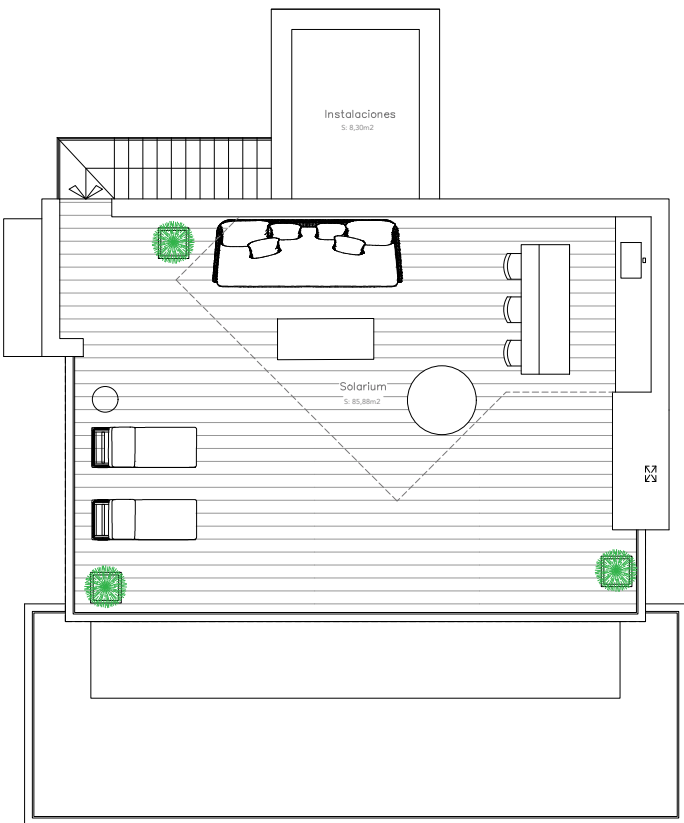
GROUND LEVEL



UPPER LEVEL



SOLARIUM



Beds: 5 | **Baths:** 5+1 | **Plot:** 1.142m² | **Built:** 310m² | **Parking:** 2 | **Orientation:** S/E



cerquilla54b.es