

Villa Siena

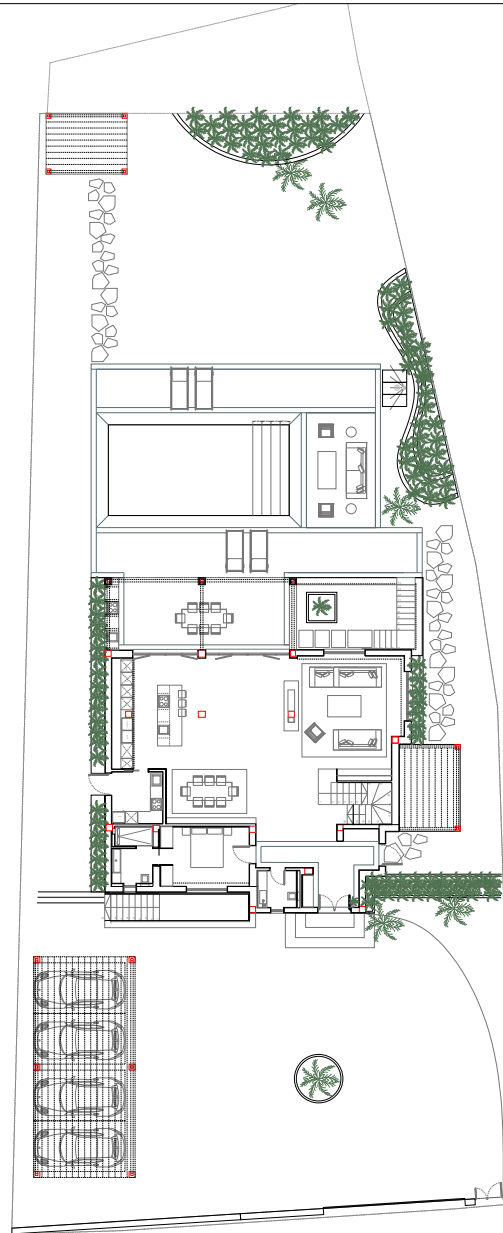
PLOT: 1239 SQM

| BUILT AREA | |
|--------------|-------------------|
| FIRST FLOOR | 89.59 SQM |
| GROUND FLOOR | 180.07 SQM |
| BASEMENT | 210.50 SQM |
| TOTAL | 480.16 SQM |

| USABLE INTERIOR SURFACES | |
|--------------------------|-------------------|
| FIRST FLOOR | |
| MASTER BEDROOM (SUITE) | 64.90 SQM |
| HALL | 2.51 SQM |
| GROUND FLOOR | |
| LIVING ROOM | 105.88 SQM |
| DIRTY KITCHEN | 6.40 SQM |
| TOILET | 3.50 SQM |
| ENTRANCE | 15.19 SQM |
| GUEST ROOM | 18.73 SQM |
| STAIRS | 5.80 SQM |
| BASEMENT | |
| BEDROOM SUITE | 22.49 SQM |
| SPA AREA | 42.70 SQM |
| TOILET | 1.80 SQM |
| HOME CINEMA | 16.81 SQM |
| MACHINE AREA SPA | 14.63 SQM |
| NANNY BEDROOM SUITE | 19.97 SQM |
| LAUNDRY | 10.38 SQM |
| MACHINE AREA | 7.46 SQM |
| WINE CELLAR | 7.55 SQM |
| LOUNGE AREA | 33.72 SQM |
| STAIRS | 2.50 SQM |
| TOTAL | 402.92 SQM |

| USABLE TERRACE SURFACE | |
|------------------------|-------------------|
| TERRACE FIRST FLOOR | 43.48 SQM |
| GROUND FLOOR | 149.01 SQM |
| BASEMENT TERRACE | 9.23 SQM |
| SPA TERRACE | 17.76 SQM |
| TOTAL | 219.48 SQM |

TOTAL USABLE SURFACE WITH TERRACE: 620.70 SQM



PLOT

Villa Siena

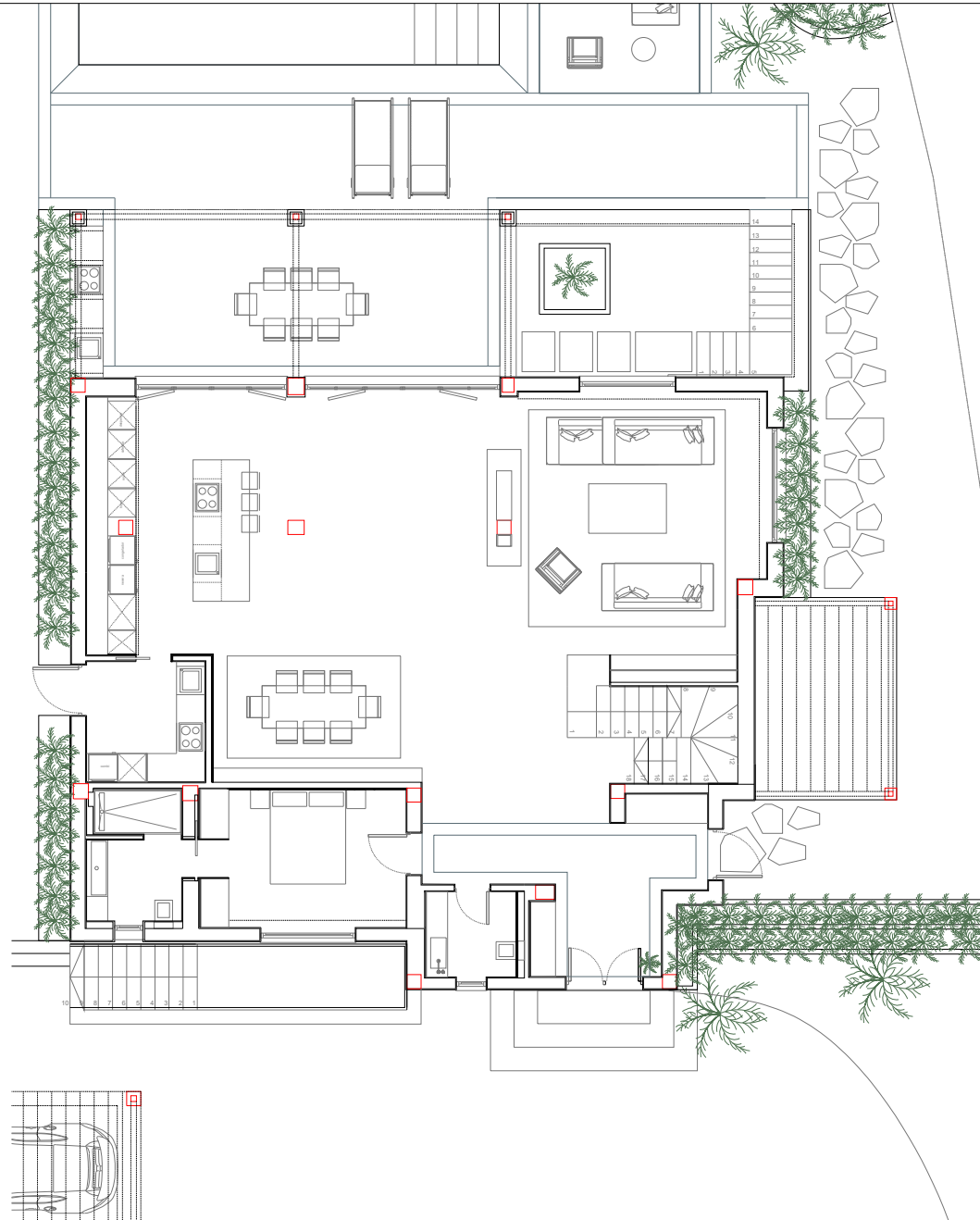
| | |
|----------------|--|
| PLOT: 1239 SQM | |
|----------------|--|

| BUILT AREA | |
|--------------|-------------------|
| FIRST FLOOR | 89.59 SQM |
| GROUND FLOOR | 180.07 SQM |
| BASEMENT | 210.50 SQM |
| TOTAL | 480,16 SQM |

| USABLE INTERIOR SURFACES | |
|--------------------------|-------------------|
| FIRST FLOOR | |
| MASTER BEDROOM (SUITE) | 64.90 SQM |
| HALL | 2.51 SQM |
| GROUND FLOOR | |
| LIVING ROOM | 105.88 SQM |
| DIRTY KITCHEN | 6.40 SQM |
| TOILET | 3.50 SQM |
| ENTRANCE | 15.19 SQM |
| GUEST ROOM | 18.73 SQM |
| STAIRS | 5.80 SQM |
| BASEMENT | |
| BEDROOM SUITE | 22.49 SQM |
| SPA AREA | 42.70 SQM |
| TOILET | 1.80 SQM |
| HOMECINEMA | 16,81 SQM |
| MACHINE AREA SPA | 14,63 SQM |
| NANNY BEDROOM SUITE | 19,97 SQM |
| LAUNDRY | 10,38 SQM |
| MACHINE AREA | 7,46 SQM |
| WINE CELLAR | 7,55 SQM |
| LOUNGE AREA | 33,72 SQM |
| STAIRS | 2,50 SQM |
| TOTAL | 402,92 SQM |

| USABLE TERRACE SURFACE | |
|------------------------|-------------------|
| TERRACE FIRST FLOOR | 43,48 SQM |
| GROUND FLOOR | 149,01 SQM |
| BASEMENT TERRACE | 9,23 SQM |
| SPA TERRACE | 17,76 SQM |
| TOTAL | 219,48 SQM |

| |
|--|
| TOTAL USABLE SURFACE WITH TERRACE: 620,70 SQM |
|--|



GROUND FLOOR

Villa Siena

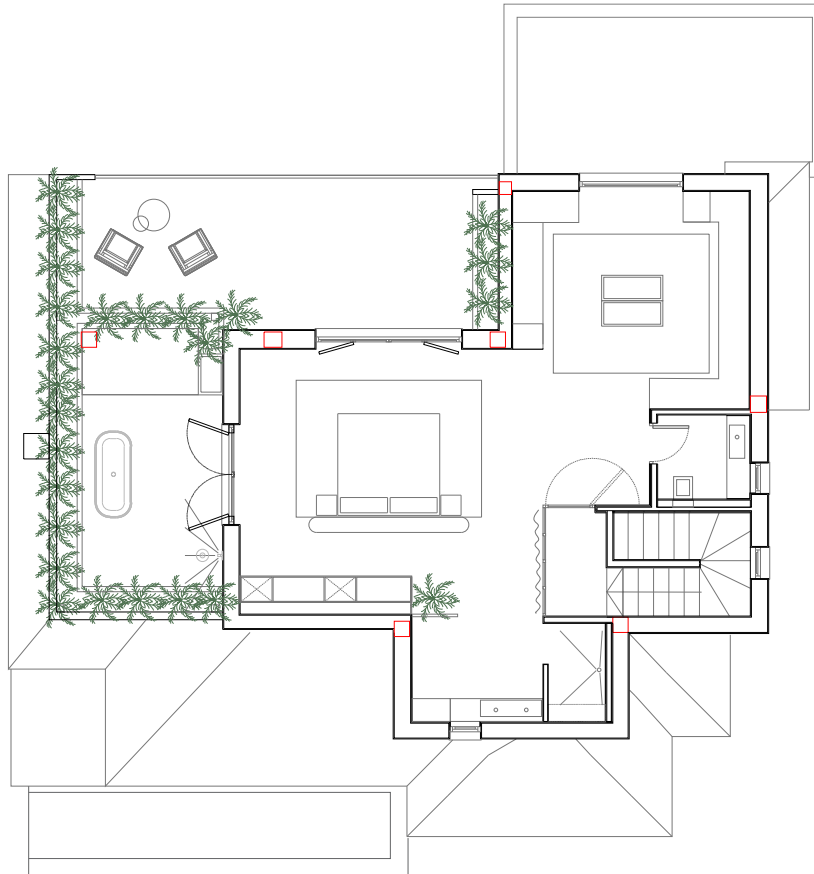
PLOT: 1239 SQM

| BUILT AREA | |
|--------------|------------|
| FIRST FLOOR | 89.59 SQM |
| GROUND FLOOR | 180.07 SQM |
| BASEMENT | 210.50 SQM |
| TOTAL | 480,16 SQM |

| USABLE INTERIOR SURFACES | |
|--------------------------|------------|
| FIRST FLOOR | |
| MASTER BEDROOM (SUITE) | 64.90 SQM |
| HALL | 2.51 SQM |
| GROUND FLOOR | |
| LIVING ROOM | 105.88 SQM |
| DIRTY KITCHEN | 6.40 SQM |
| TOILET | 3.50 SQM |
| ENTRANCE | 15.19 SQM |
| GUEST ROOM | 18.73 SQM |
| STAIRS | 5.80 SQM |
| BASEMENT | |
| BEDROOM SUITE | 22.49 SQM |
| SPA AREA | 42.70 SQM |
| TOILET | 1.80 SQM |
| HOME CINEMA | 16,81 SQM |
| MACHINE AREA SPA | 14,63 SQM |
| NANNY BEDROOM SUITE | 19,97 SQM |
| LAUNDRY | 10,38 SQM |
| MACHINE AREA | 7,46 SQM |
| WINE CELLAR | 7,55 SQM |
| LOUNGE AREA | 33,72 SQM |
| STAIRS | 2,50 SQM |
| TOTAL | 402,92 SQM |

| USABLE TERRACE SURFACE | |
|------------------------|------------|
| TERRACE FIRST FLOOR | 43,48 SQM |
| GROUND FLOOR | 149,01 SQM |
| BASEMENT TERRACE | 9,23 SQM |
| SPA TERRACE | 17,76 SQM |
| TOTAL | 219,48 SQM |

TOTAL USABLE SURFACE WITH TERRACE: 620,70 SQM



FIRST FLOOR

Villa Siena

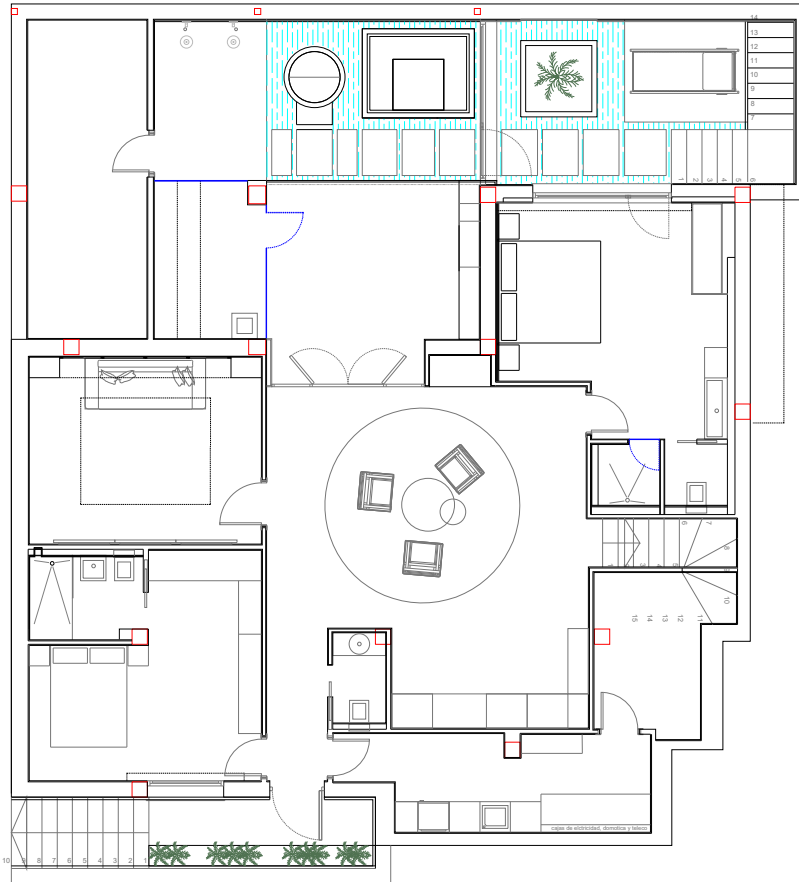
PLOT: 1239 SQM

| BUILT AREA | |
|--------------|-------------------|
| FIRST FLOOR | 89.59 SQM |
| GROUND FLOOR | 180,07 SQM |
| BASEMENT | 210,50 SQM |
| TOTAL | 480,16 SQM |

| USABLE INTERIOR SURFACES | |
|--------------------------|-------------------|
| FIRST FLOOR | |
| MASTER BEDROOM (SUITE) | 64.90 SQM |
| HALL | 2.51 SQM |
| GROUND FLOOR | |
| LIVING ROOM | 105.88 SQM |
| DIRTY KITCHEN | 6.40 SQM |
| TOILET | 3.50 SQM |
| ENTRANCE | 15.19 SQM |
| GUEST ROOM | 18.73 SQM |
| STAIRS | 5.80 SQM |
| BASEMENT | |
| BEDROOM SUITE | 22.49 SQM |
| SPA AREA | 42,70 SQM |
| TOILET | 1,80 SQM |
| HOME CINEMA | 16,81 SQM |
| MACHINE AREA SPA | 14,63 SQM |
| NANNY BEDROOM SUITE | 19,97 SQM |
| LAUNDRY | 10,38 SQM |
| MACHINE AREA | 7,46 SQM |
| WINE CELLAR | 7,55 SQM |
| LOUNGE AREA | 33,72 SQM |
| STAIRS | 2,50 SQM |
| TOTAL | 402,92 SQM |

| USABLE TERRACE SURFACE | |
|------------------------|-------------------|
| TERRACE FIRST FLOOR | 43,48 SQM |
| GROUND FLOOR | 149,01 SQM |
| BASEMENT TERRACE | 9,23 SQM |
| SPA TERRACE | 17,76 SQM |
| TOTAL | 219,48 SQM |

TOTAL USABLE SURFACE WITH TERRACE: 620,70 SQM



BASEMENT