

Villa Siena



VILLA SIENA

This exceptional villa blends modern design with timeless Italian elegance, creating a luxurious and sophisticated sanctuary.

Situated directly on the prestigious Las Brisas golf course, Villa Siena offers peaceful views over the La Concha mountain, embraced by calm, green landscapes while being conveniently close to all essential amenities.

The inside is surrounded with thoughtful details, elegant interior design and bespoke features such as a private wine bodega, cinema room, and a spa designed for ultimate relaxation.

The outdoor living space is carefully designed for elegant alfresco dining as well as entertaining under the Marbella sun.

Villa Siena presents a unique opportunity to enjoy refined living where every detail embodies grace, comfort, and grandeur.





The upper floor is reserved for the master suite, offering complete privacy. This en-suite bedroom features access to two terraces: one with a chill-out lounge and the other with an al fresco bathtub and shower.

The basement offers a thoughtfully designed retreat, featuring an en-suite bedroom, a toilet, a bespoke spa with an indoor pool, a jacuzzi, and a sauna. Additional amenities include a home cinema, lounge area, and an intimate wine bodega, along with a nanny suite, machine room, and laundry room for convenience.

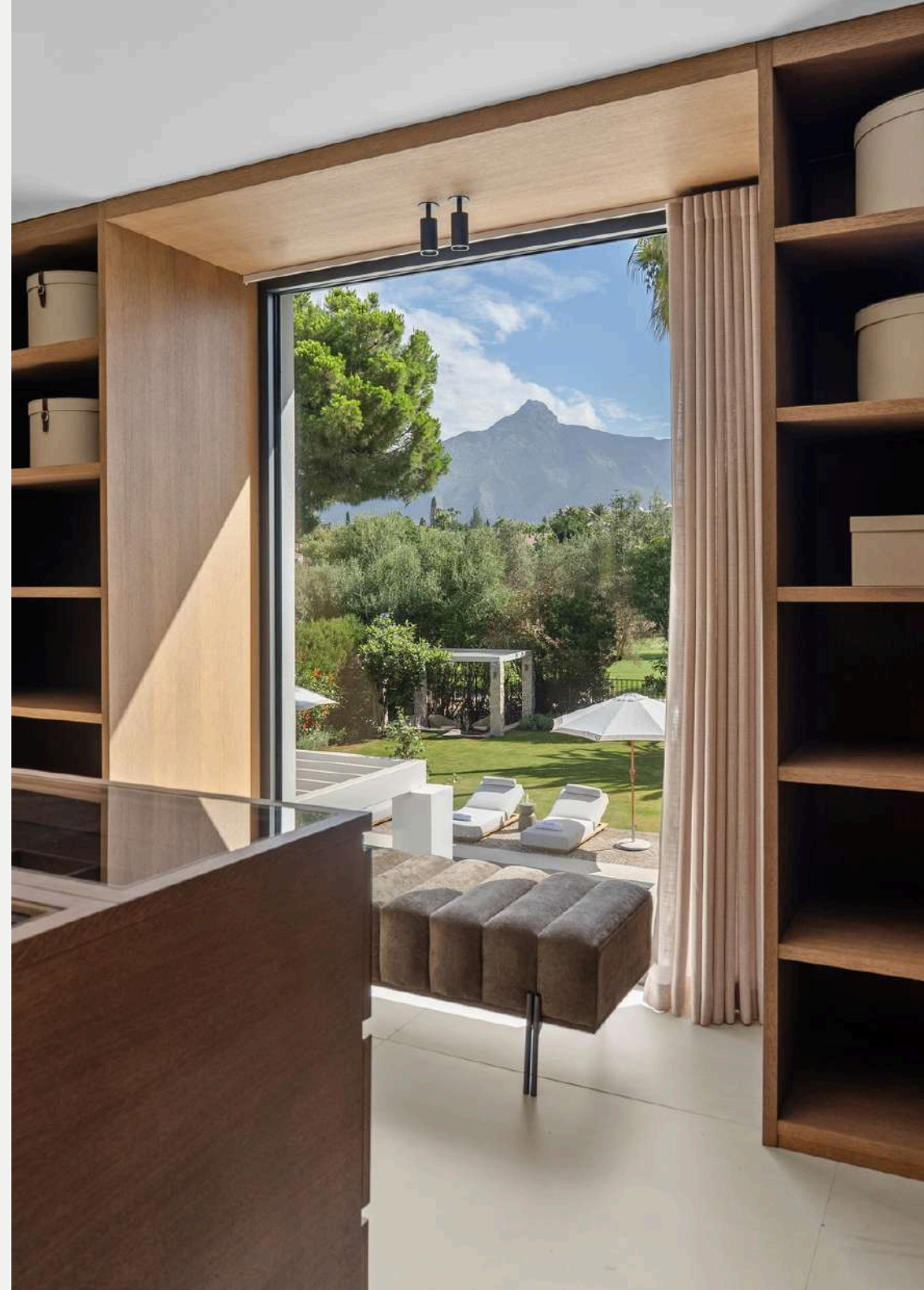
All bathrooms offer underfloor heating, while the surroundings benefit from periodic local patrols for peace of mind. Its strategic location is close to shops, top-tier golf courses, and schools, making it as convenient as it is stunning.



VILLA SIENA

€ 7,495,000

BEDS	4
BATHS	6
BUILT	480 m ²
TERRACE	228 m ²
PLOT	1239 m ²
IBI	2126€ / Year
GARBAGE TAX	139€ / Year



FEATURES



FRONT LINE GOLF

ITALIAN ARCHITECTURE

CLOSE TO AMENITIES

SPA & SAUNA

SECURITY SERVICE 24H

DOMOTIC SYSTEM

PRIVATE WINE BODEGA

CINEMA ROOM

UNDERFLOOR HEATING

PRIVATE POOL

PRIVATE GARDEN

OUTDOOR KITCHEN

COVERED TERRACE

PRIVATE PARKING





































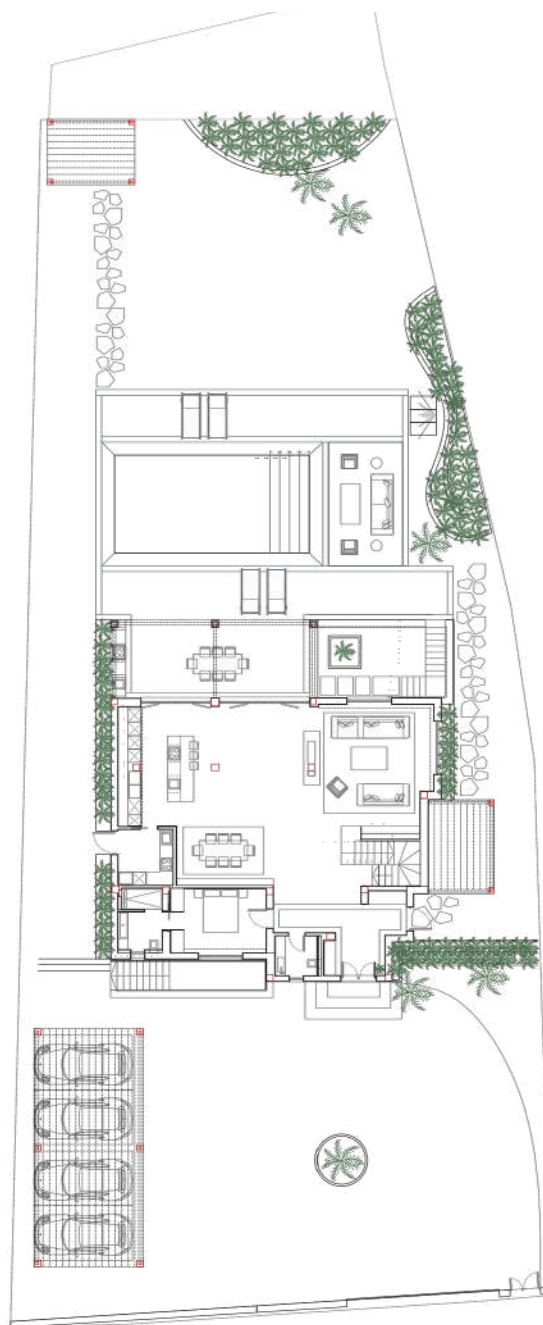
Villa Siena

PLOT: 1239 SQM	
----------------	--

BUILT AREA	
FIRST FLOOR	89.59 SQM
GROUND FLOOR	180.07 SQM
BASEMENT	210.50 SQM
TOTAL	480.16 SQM

USABLE INTERIOR SURFACES	
FIRST FLOOR	
MASTER BEDROOM (SUITE)	64.90 SQM
HALL	2.51 SQM
GROUND FLOOR	
LIVING ROOM	105.88 SQM
DIRTY KITCHEN	6.40 SQM
TOILET	3.50 SQM
ENTRANCE	15.19 SQM
GUEST ROOM	18.73 SQM
STAIRS	5.80 SQM
BASEMENT	
BEDROOM SUITE	22.49 SQM
SPA AREA	42.70 SQM
TOILET	1.80 SQM
HOME CINEMA	16.81 SQM
MACHINE AREA SPA	14.63 SQM
NANNY BEDROOM SUITE	19.97 SQM
LAUNDRY	10.38 SQM
MACHINE AREA	7.46 SQM
WINE CELLAR	7.55 SQM
LOUNGE AREA	33.72 SQM
STAIRS	2.50 SQM
TOTAL	402.92 SQM

USABLE TERRACE SURFACE	
TERRACE FIRST FLOOR	43.48 SQM
GROUND FLOOR	149.01 SQM
BASEMENT TERRACE	9.23 SQM
SPA TERRACE	17.76 SQM
TOTAL	219.48 SQM
TOTAL USABLE SURFACE WITH TERRACE: 620.70 SQM	



Villa Siena

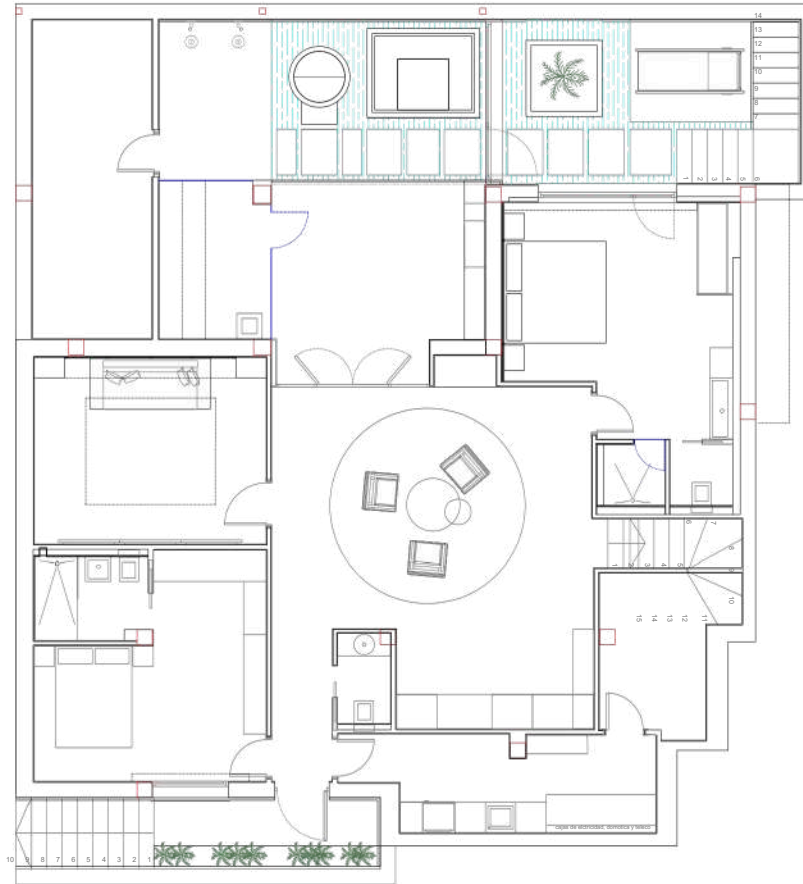
PLOT: 1239 SQM

BUILT AREA	
FIRST FLOOR	89.59 SQM
GROUND FLOOR	180,07 SQM
BASEMENT	210,50 SQM
TOTAL	480,16 SQM

USABLE INTERIOR SURFACES	
FIRST FLOOR	
MASTER BEDROOM (SUITE)	64.90 SQM
HALL	2.51 SQM
GROUND FLOOR	
LIVING ROOM	105.88 SQM
DIRTY KITCHEN	6.40 SQM
TOILET	3.50 SQM
ENTRANCE	15.19 SQM
GUEST ROOM	18.73 SQM
STAIRS	5.80 SQM
BASEMENT	
BEDROOM SUITE	22.49 SQM
SPA AREA	42,70 SQM
TOILET	1.80 SQM
HOME CINEMA	16,81 SQM
MACHINE AREA SPA	14,63 SQM
NANNY-BEDROOM SUITE	19,97 SQM
LAUNDRY	10,38 SQM
MACHINE AREA	7,46 SQM
WINE CELLAR	7,55 SQM
LOUNGE AREA	33,72 SQM
STAIRS	2,50 SQM
TOTAL	402,92 SQM

USABLE TERRACE SURFACE	
TERRACE FIRST FLOOR	43,48 SQM
GROUND FLOOR	149,01 SQM
BASEMENT TERRACE	9,23 SQM
SPA TERRACE	17,76 SQM
TOTAL	219,48 SQM

TOTAL USABLE SURFACE WITH TERRACE: 620,70 SQM



BASEMENT

Villa Siena

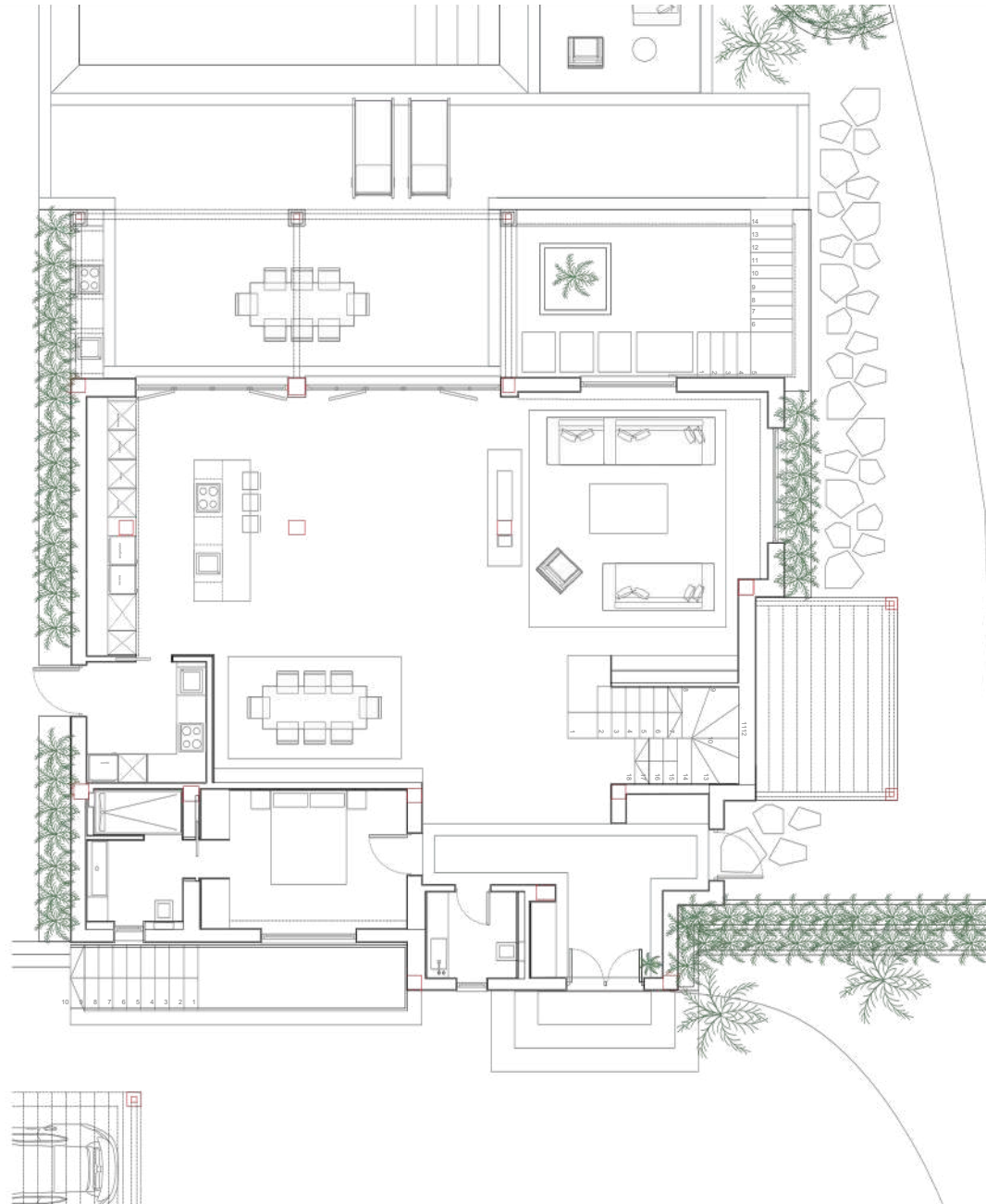
PLOT: 1239 SQM	
----------------	--

BUILT AREA	
FIRST FLOOR	89.59 SQM
GROUND FLOOR	180,07 SQM
BASEMENT	210,50 SQM
TOTAL	480,16 SQM

USABLE INTERIOR SURFACES	
FIRST FLOOR	
MASTER BEDROOM (SUITE)	64.90 SQM
HALL	2.51 SQM
GROUND FLOOR	
LIVING ROOM	105.88 SQM
DIRTY KITCHEN	6.40 SQM
TOILET	3.50 SQM
ENTRANCE	15.19 SQM
GUEST ROOM	18.73 SQM
STAIRS	5.80 SQM
BASEMENT	
BEDROOM SUITE	22.49 SQM
SPA AREA	42,70 SQM
TOILET	1.80 SQM
HOME CINEMA	16,81 SQM
MACHINE AREA SPA	14,63 SQM
NANNY-BEDROOM SUITE	19,97 SQM
LAUNDRY	10,38 SQM
MACHINE AREA	7,46 SQM
WINE CELLAR	7,55 SQM
LOUNGE AREA	33,72 SQM
STAIRS	2,50 SQM
TOTAL	402,92 SQM

USABLE TERRACE SURFACE	
TERRACE FIRST FLOOR	43,48 SQM
GROUND FLOOR	149,01 SQM
BASEMENT TERRACE	9,23 SQM
SPA TERRACE	17,76 SQM
TOTAL	219,48 SQM

TOTAL USABLE SURFACE WITH TERRACE: 620,70 SQM
--



GROUND FLOOR

Villa Siena

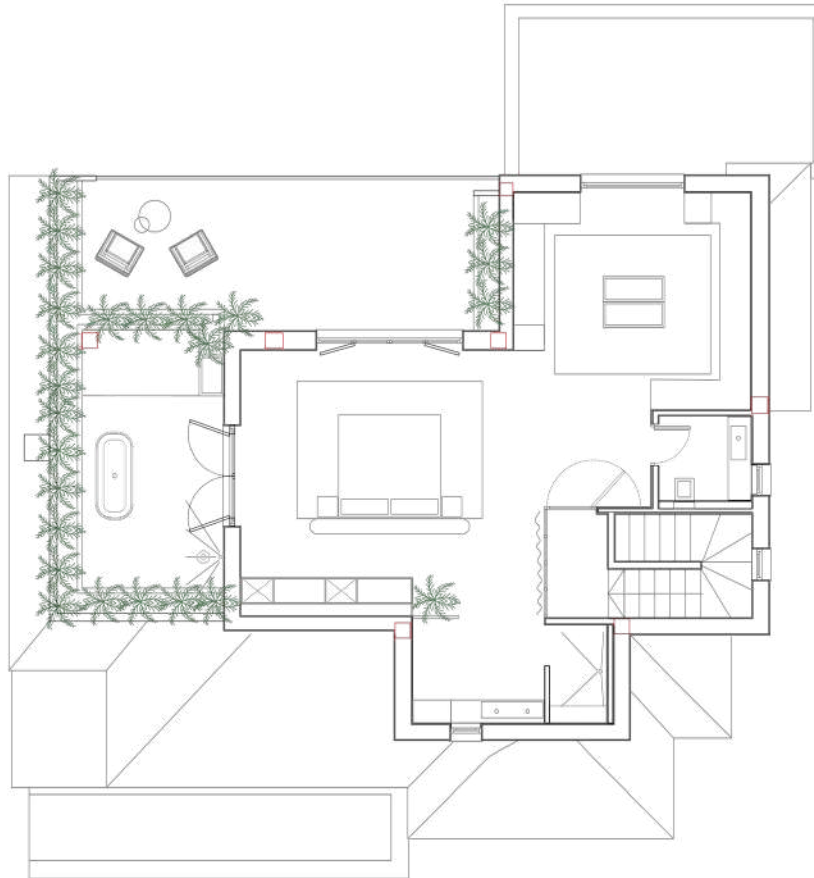
PLOT: 1239 SQM	
----------------	--

BUILT AREA	
FIRST FLOOR	89.59 SQM
GROUND FLOOR	180,07 SQM
BASEMENT	210,50 SQM
TOTAL	480,16 SQM

USABLE INTERIOR SURFACES	
FIRST FLOOR	
MASTER BEDROOM (SUITE)	64.90 SQM
HALL	2.51 SQM
GROUND FLOOR	
LIVING ROOM	105.88 SQM
DIRTY KITCHEN	6.40 SQM
TOILET	3.50 SQM
ENTRANCE	15.19 SQM
GUEST ROOM	18.73 SQM
STAIRS	5.80 SQM
BASEMENT	
BEDROOM SUITE	22.49 SQM
SPA AREA	42,70 SQM
TOILET	1.80 SQM
HOME CINEMA	16,81 SQM
MACHINE AREA SPA	14,63 SQM
NANNY-BEDROOM SUITE	19,97 SQM
LAUNDRY	10,38 SQM
MACHINE AREA	7,46 SQM
WINE CELLAR	7,55 SQM
LOUNGE AREA	33,72 SQM
STAIRS	2,50 SQM
TOTAL	402,92 SQM

USABLE TERRACE SURFACE	
TERRACE FIRST FLOOR	43,48 SQM
GROUND FLOOR	149,01 SQM
BASEMENT TERRACE	9,23 SQM
SPA TERRACE	17,76 SQM
TOTAL	219,48 SQM

TOTAL USABLE SURFACE WITH TERRACE: 620,70 SQM



FIRST FLOOR



Nueva Andalucía, the Golf Valley of Costa del Sol.

Lodged in the picturesque valley known as The Golf Valley—home to world-renowned courses—Nueva Andalucía is an exclusive residential area. The landscape blends rolling hills, lush greenery, palm-lined streets, and carefully groomed fairways, all framed by stunning views of the iconic La Concha Mountain. Broad avenues, wide sidewalks, and designated walking paths enhance its family-friendly charm and suitability for leisurely strolls. Just a 5-minute drive from Puerto Banús and steps from vibrant spots like Centro Plaza and Marbella Arena-Auditorium, it is a highly sought-after location on the Costa del Sol.

VILLASIENA.ES