

WHERE WARM MEETS COOL

# VILLA MALIBÚ



ZAGAleta®

WHERE WARM MEETS COOL

# VILLA MALIBÚ

Welcome to Villa Malibú, a move-in ready home in a tranquil corner of the estate. The gleaming modern wood exterior is matched by a contemporary interior, characterised by open plan living and warm neutral tones. The outdoor space is just as appealing, with a sociable pool terrace in a flourishing garden.

PLOT 3.548 m<sup>2</sup> | TOTAL BUILT approx. 700 m<sup>2</sup> | BEDS 7\* | BATHS 7 ( +2 )  
ORIENTATION West | VIEWS Mountains and valley

\*Includes guest/staff apartment with separate entrance









With eye-catching light wood panelling, a flat roof and sophisticated lines, Villa Malibú immediately conveys its design heritage: a strikingly elegant modern presence, that could come from the Californian hills.

That distinctive style has been accentuated by a recent remodelling inside and out, adding bespoke features and furnishing and making smarter use of its ample plot. Accommodation is spread over three floors, plus a variety of outdoor spaces for every mood .

From the serene and understated entrance hall, Villa Malibú divides into two wings. To the left lies the centrepiece of the home, an open plan living space, featuring a contemporary kitchen with built-in branded appliances and a breakfast bar, plus a well-delineated dining area. This opens onto an enchanting covered balcony, with room for an outside dining table as well as a large sofa overlooking the leafy view.

There is a separate snug lounge, with carefully selected furnishings, fabrics and lighting to provide a tranquil, relaxing space.

The right wing hosts a superbly-appointed master suite, where bespoke features with hints of mid-century styling maintain the chic aesthetic that is in perfect harmony with the exterior.























The lower floor features five further bedrooms, all with en suite bathrooms, plus a staff apartment.

All benefit from ample natural light – with four of the bedrooms having direct garden access – that lends warmth and depth to the neutral tones of the contemporary colour palette.

The basement has a similar feel and is focused on wellness: alongside a sizeable gym, there is a sauna and hammam.

Outside, the landscaped garden offers mature trees and shrubs plus a pristine lawned area. Steps lead down to one of the villa's most attractive features: the secluded pool with a patio all the way round and a part-covered terrace, offering a further al fresco dining area . This convivial corner is ideal for entertaining.

Presented move-in ready, Villa Malibú epitomises modern ease of living and contemporary style.











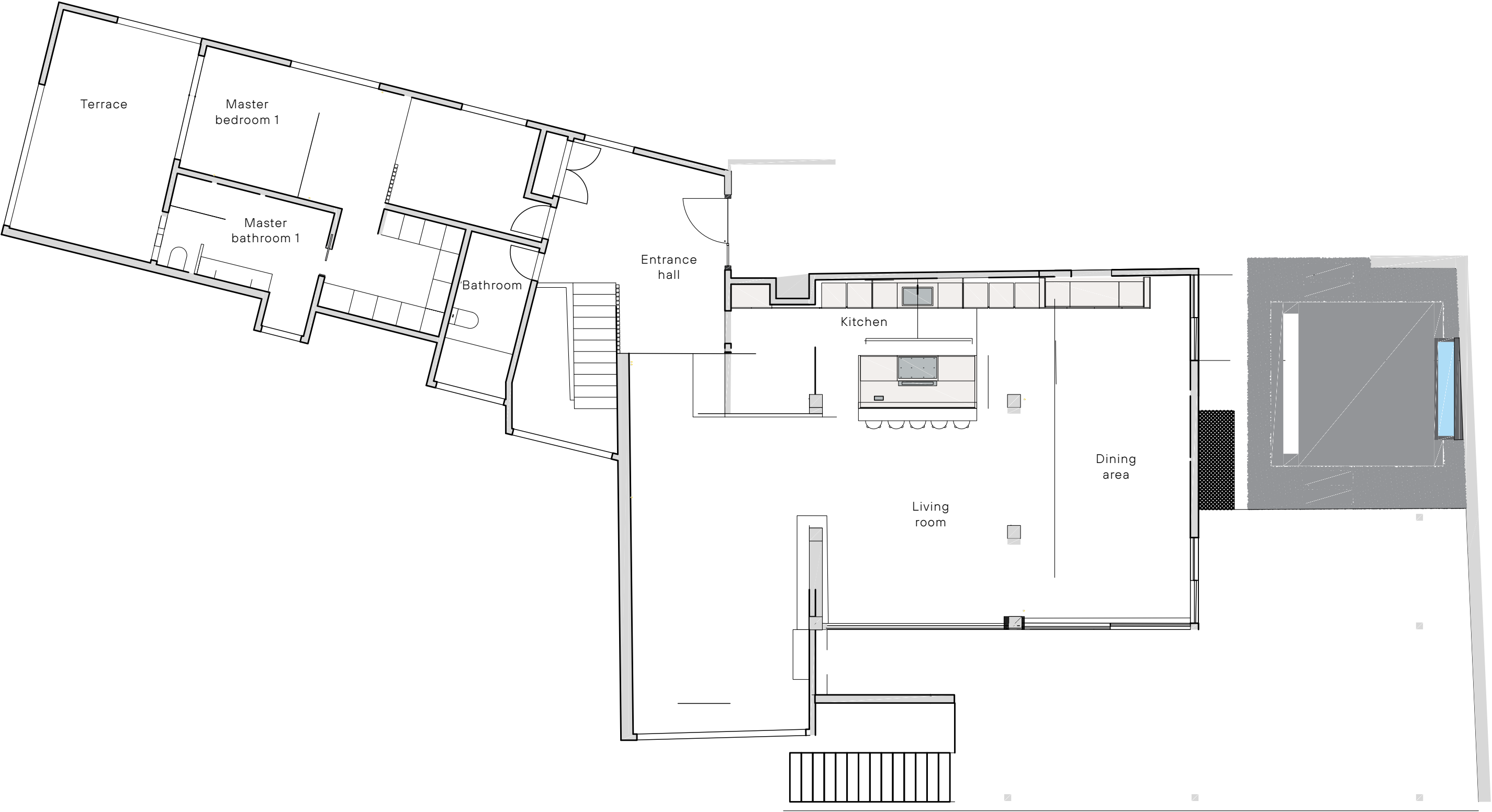






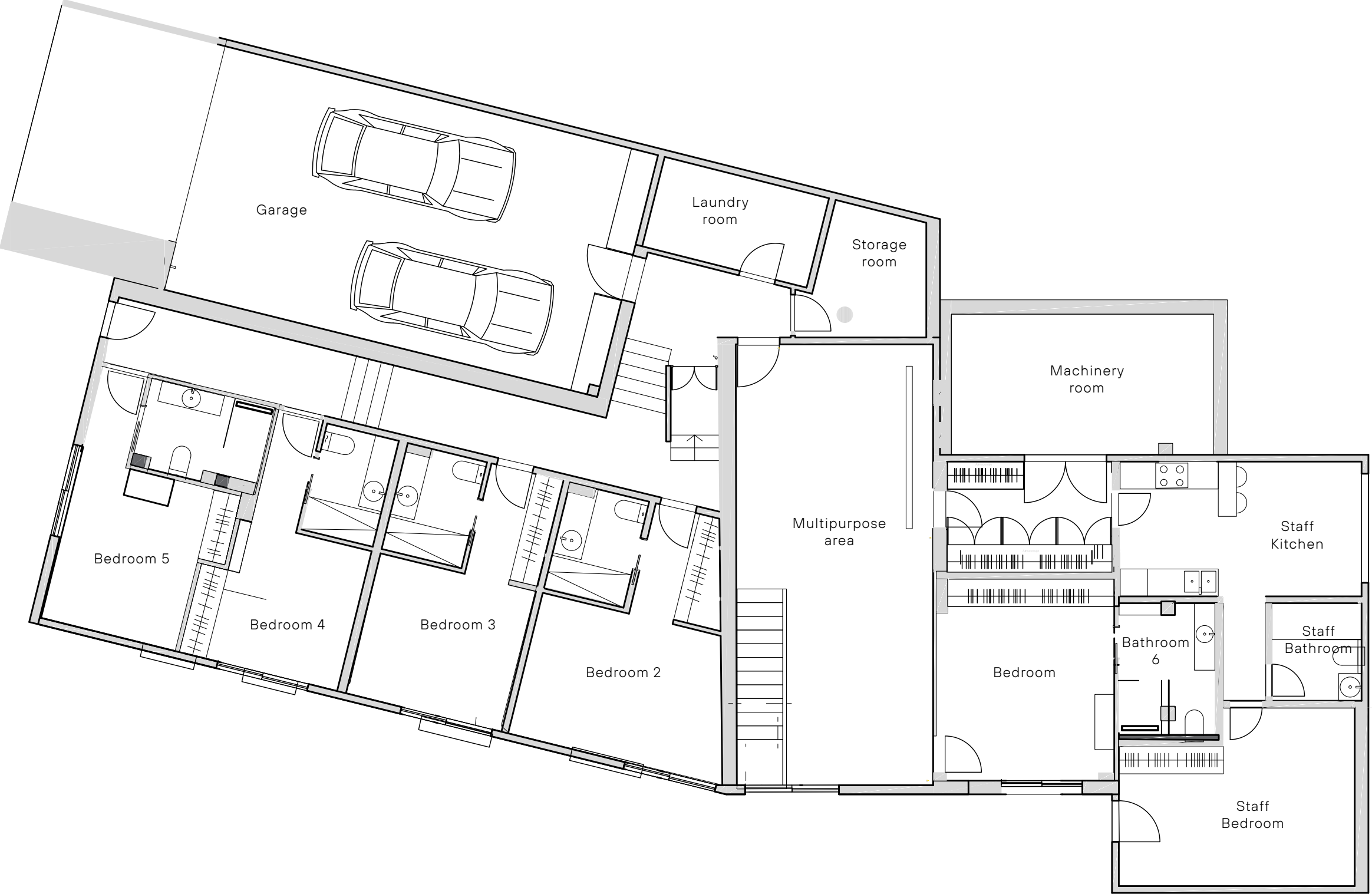


GROUND FLOOR



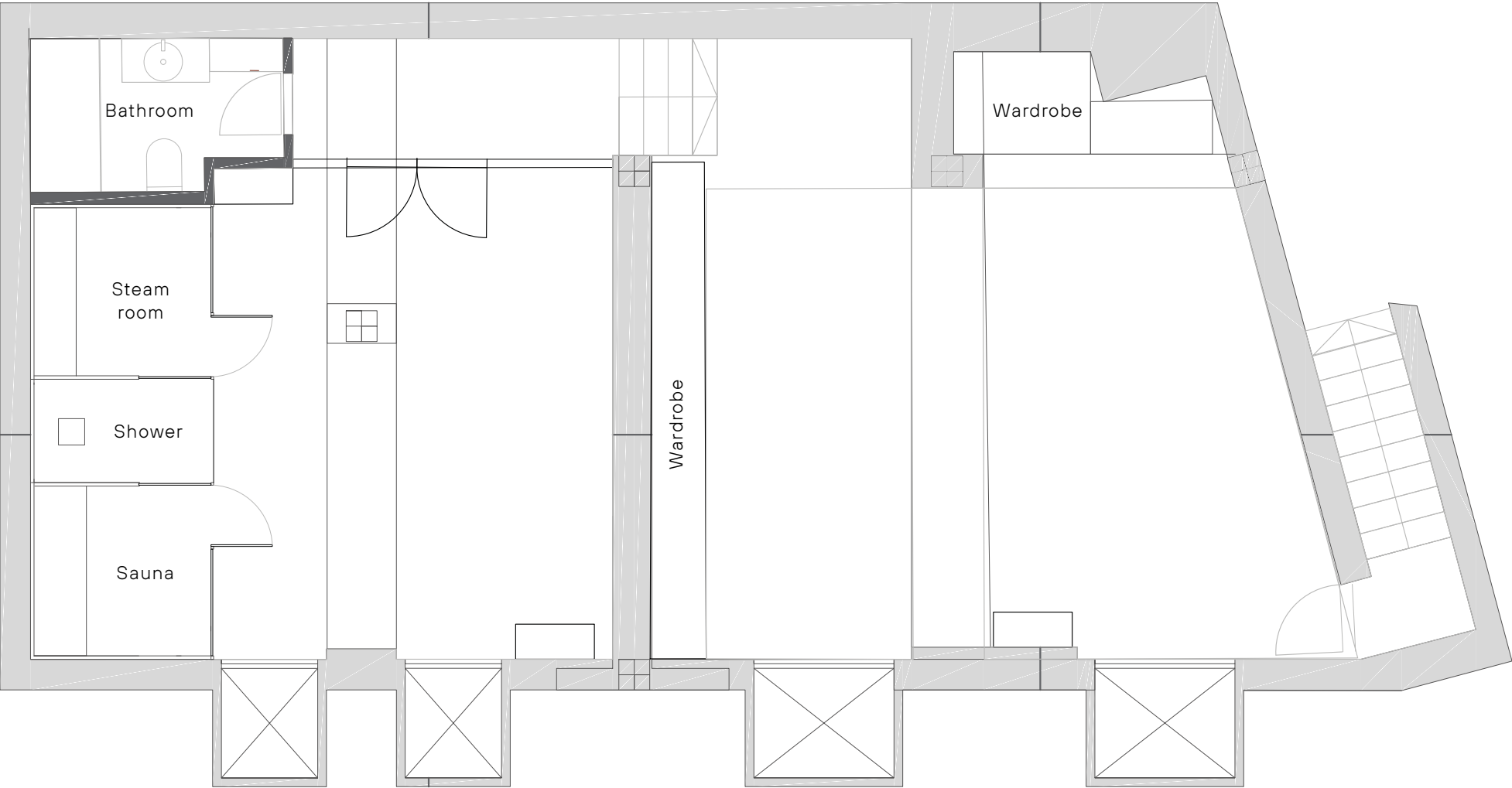


LOWER FLOOR





BASEMENT







LAYOUT

GROUND FLOOR

- Entrance hall
- Guest toilet
- Kitchen
- Dining area
- Lounge area
- Living room
- Master bedroom with bathroom ensuite, dressing area and private terrace

LOWER FLOOR

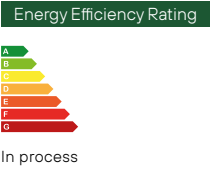
- 4 bedrooms with bathrooms ensuite and wardrobes
- Multipurpose area
- Staff apartment with one ensuite bedroom, living room and kitchen
- 1 bedroom with bathroom ensuite and wardrobes
- Laundry room
- Storage room
- Machinery room

BASEMENT

- Gym with wardrobes
- Spa area with sauna, hammam, shower and toilet

SPECIAL FEATURES

- Underfloor heating
- Outdoor pool
- Garage for 2 cars
- Air conditioning
- Pool house
- Pool toilet



Data provided by the project architect, constituting no liability on behalf of La Zagaleta S.L.



