

THE LIST - RÍO REAL  
27 TOWNHOUSES PROJECT

The List Río Real is a complex made up of 27 townhouses which boast excellent quality finishes. The project will offer 2 types of semi-detached homes, with 4 and 5 bedrooms, spread over the basement, ground floor, and first floor. They also include a solarium with a private swimming pool, offering incredible sea views, tranquillity, and privacy.

PARCELA: PA-RR-9.

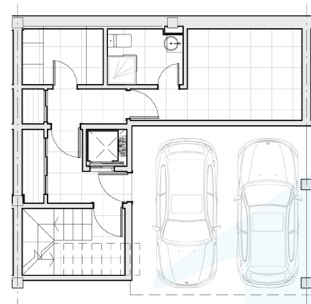
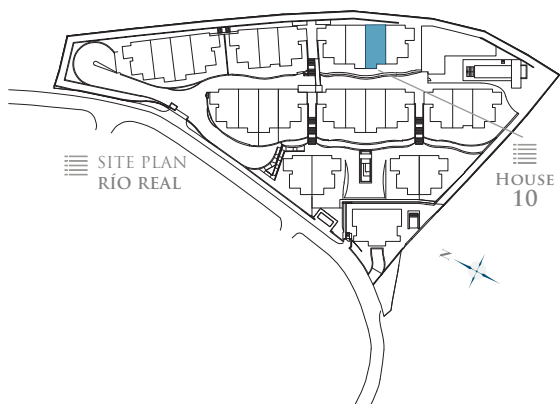
"LOMAS DEL POZUELO". MARBELLA

TOTAL PLOT AREA: 11.973,45 M<sup>2</sup>

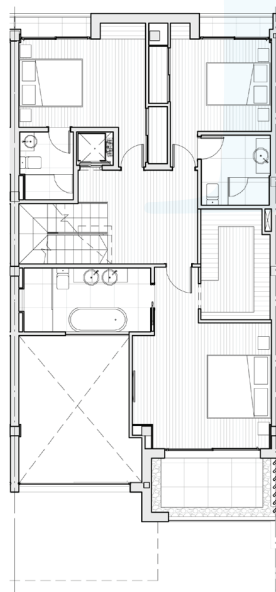
·NOTE: This document is informative. The floor plans and areas expressed may undergo variations due to technical demands of the project. The furniture shown is not included being merely illustrative.

# 10 FLOOR PLAN

## FLOORS - HOUSE TEN -



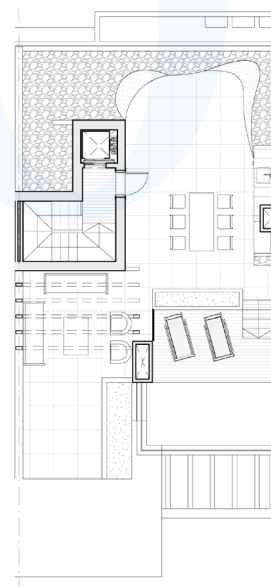
- BASEMENT -



- FIRST FLOOR -



- GROUND FLOOR -



- ROOF FLOOR -

TOTAL USEFUL AREA:  
227,95 m<sup>2</sup>

TOTAL USEFUL AREA  
ACCORDING TO RD 218/2005:  
250,75 m<sup>2</sup>

### BUILT AREA

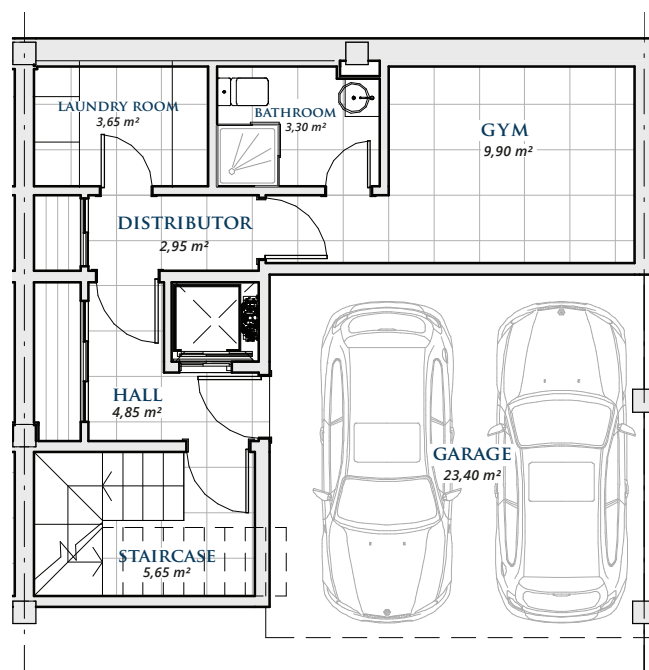
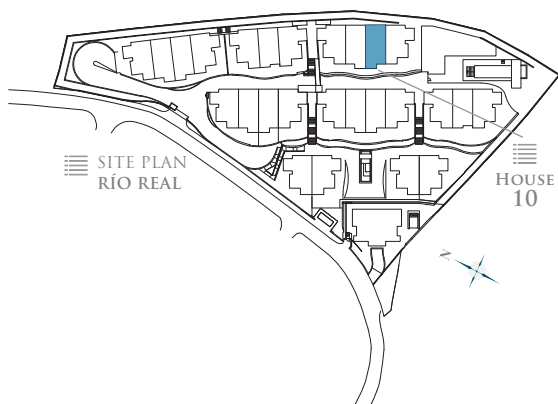
LIVING AREA	210,25 m <sup>2</sup>
TERRACES	144,95 m <sup>2</sup>
BASEMENT	63,32 m <sup>2</sup>
PRIVATE GARDEN	6,45 m <sup>2</sup>
TOTAL BUILT AREA:	418,52 m <sup>2</sup>

# 10

FLOOR PLAN

## BASEMENT

- HOUSE TEN -



### BASEMENT

BASEMENT 39,67 m<sup>2</sup>

GARAGE 23,65 m<sup>2</sup>

TOTAL BUILT AREA: 63,32 m<sup>2</sup>

\* Basements are subject to modifications due to installation requirements.

GRAPHIC SCALE 1:100

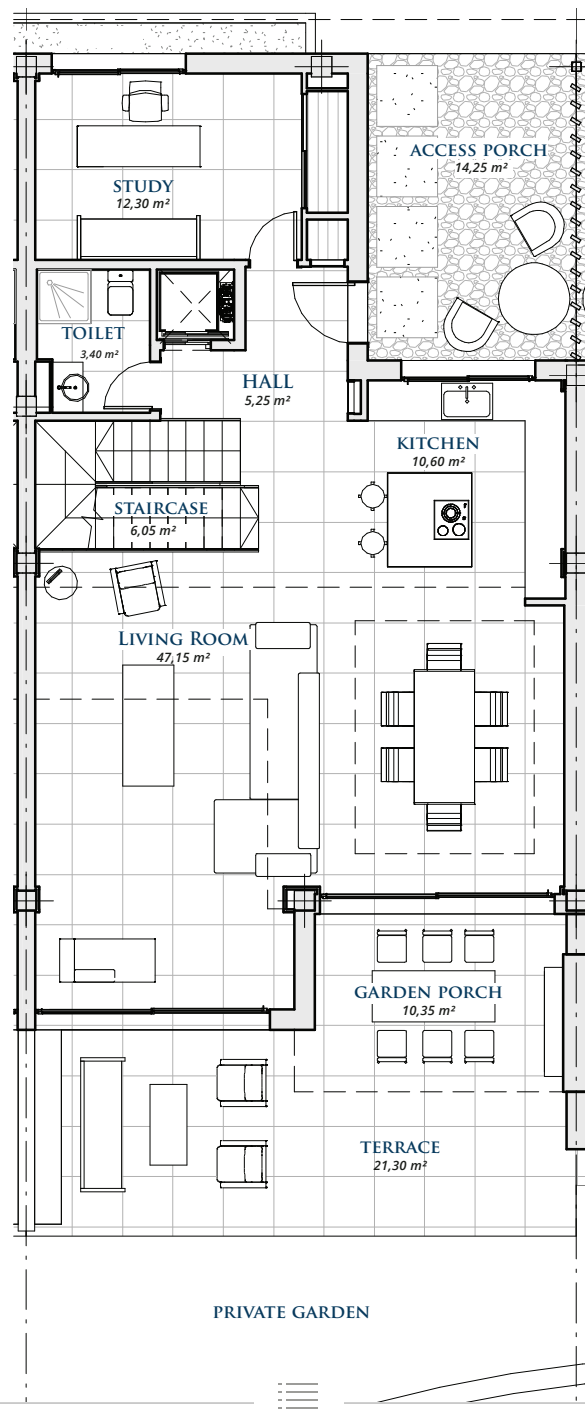
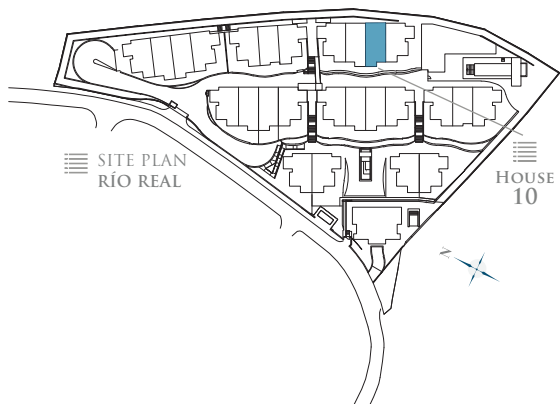


# 10

FLOOR PLAN

## GROUND FLOOR

- HOUSE TEN -



### GROUND FLOOR

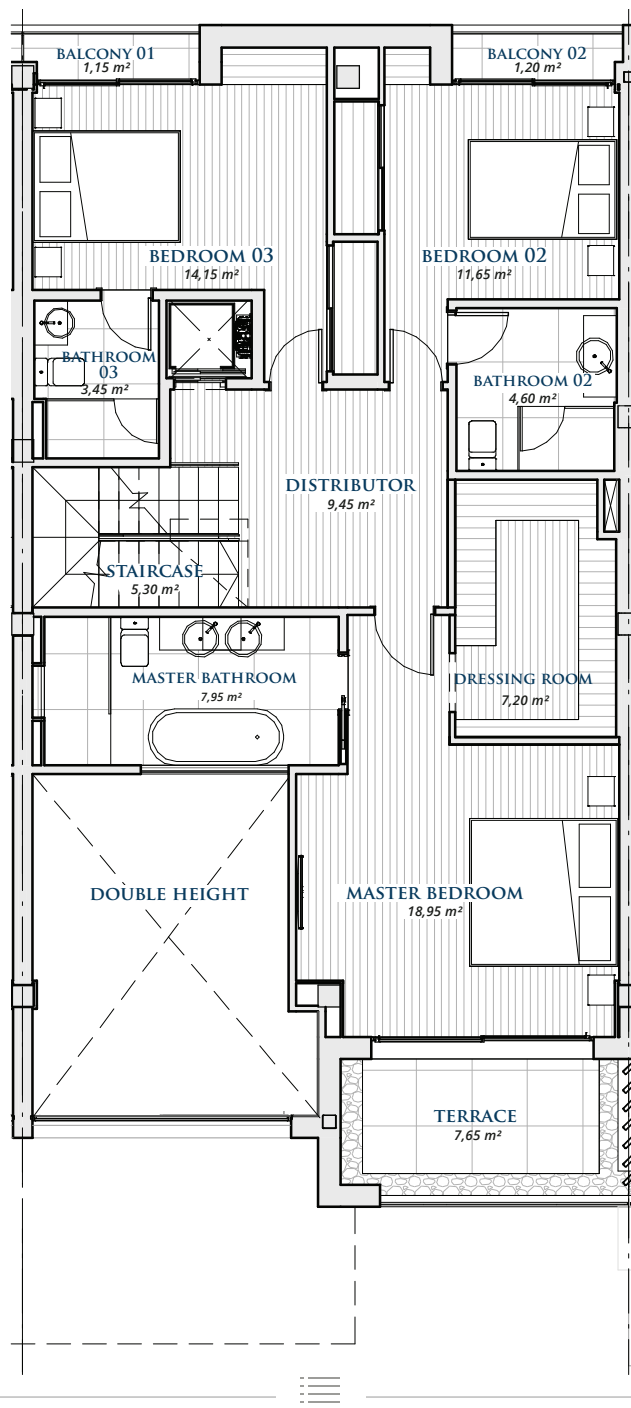
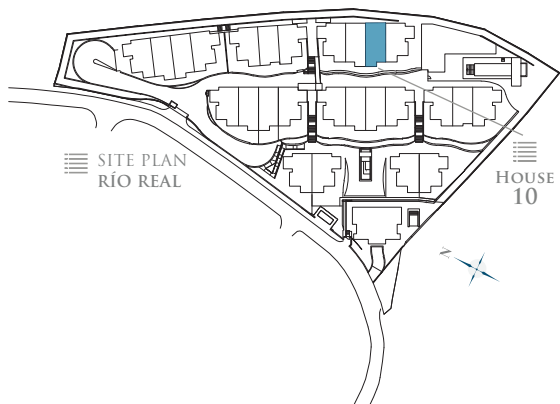
LIVING AREA	98,25 m²
TERRACE	38,40 m²
TOTAL BUILT AREA:	136,65 m²

GRAPHIC SCALE 1:100



# 10 FLOOR PLAN

## FIRST FLOOR - HOUSE TEN -



### FIRST FLOOR

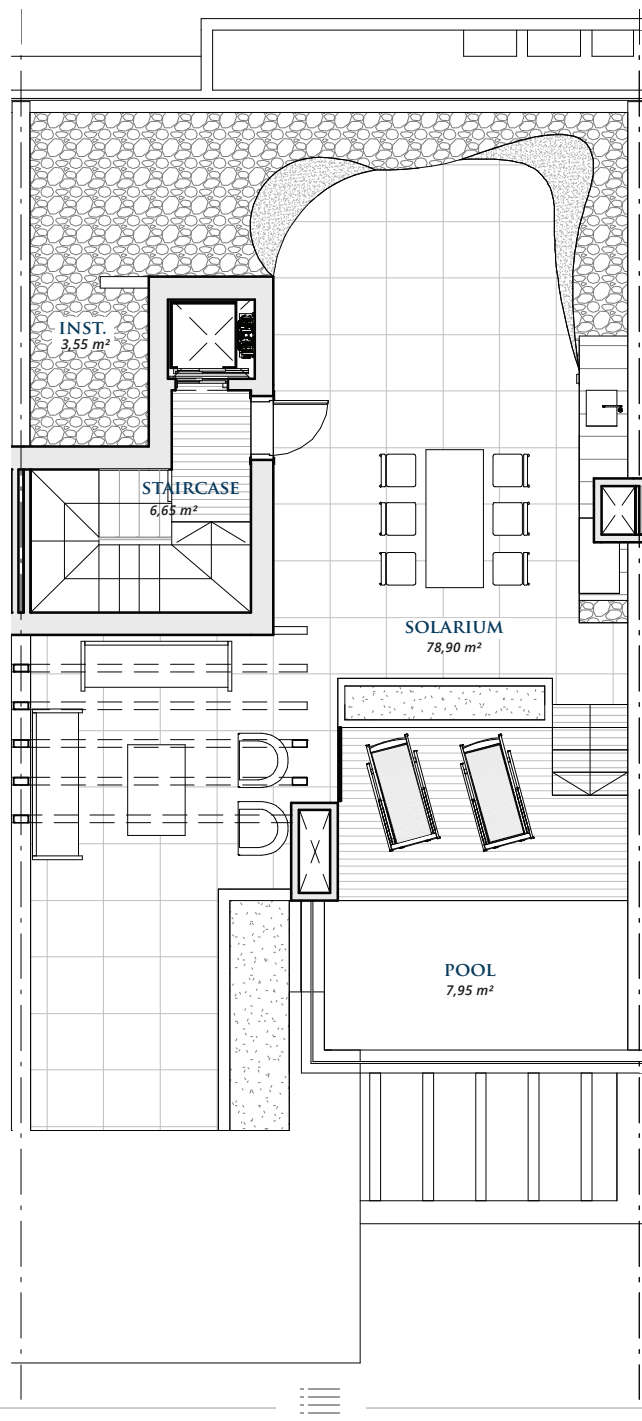
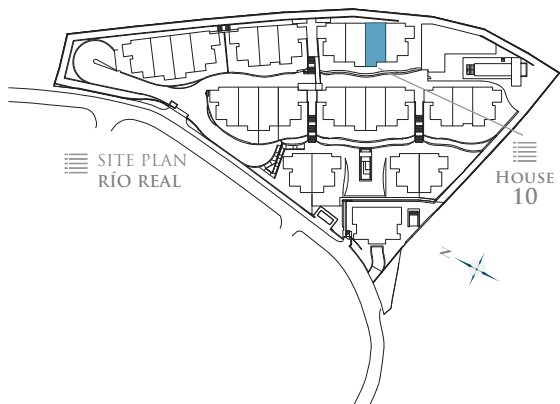
LIVING AREA	100,00 m <sup>2</sup>
TERRACE	10,5 m <sup>2</sup>
TOTAL BUILT AREA:	110,50 m <sup>2</sup>

GRAPHIC SCALE 1:100



10  
FLOOR PLAN

ROOF FLOOR  
- HOUSE TEN -



ROOF FLOOR

CLOSED AREA	12,00 m <sup>2</sup>
TERRACE	96,05 m <sup>2</sup>
TOTAL BUILT AREA:	108,05 m <sup>2</sup>

GRAPHIC SCALE 1:100

