

VILLAS CAMPANARIO GOLF

Discover the collection of *eight exclusive* designed residential villas, set in the heart of Golf Triangle, Marbella.



LOCATION

The *New Golden Mile* is the name given to the stretch of coastline between San Pedro Alcántara in Marbella and Estepona.

Approximately 45 minutes from both Gibraltar and Málaga airports, and within a short drive from Puerto Banús, Marbella, Estepona and San Pedro, the New Golden Mile continues to grow in popularity.

It's home to some of the most established complexes, located within walking distance of shops, restaurants, schools and the beach.





CONCEPT

An exclusive collection of contemporary four-bedroom villas that flow seamlessly onto the lush fairways of El Campanario Golf Course.

These residences embody the perfect harmony between nature and architecture, where striking exteriors meet exquisite interior craftsmanship.

Each villa offers a unique layout, creating a distinct living experience tailored to your lifestyle. Expansive open-plan living spaces, fully equipped designer kitchens, generous en-suite bedrooms, and abundant built-in storage define every home.

For those seeking versatility, the larger residences feature additional rooms that can serve as elegant home offices or extra bedrooms.

Private swimming pools and beautifully landscaped gardens offer serene views of the golf course, making every moment at home a refined escape in the heart of Marbella's golfing paradise.



Villa

Plot size

Built size

Terraces

Covered terrace

Parking

Total built

Bedrooms

Bathrooms

Pool



4

680.93m²

347.64m²

121.35m²

47.40m²

94.30m²

529.56m²

4

4

18.73m²

5

567.32m²

372.15m²

106.20m²

44.97m²

43.16m²

525.97m²

4

3.5

18.75m²

8

419.37m²

254.40m²

79.65m²

24.06m²

39.62m²

362.70m²

4

3.5

13.62m²

*V*illa 5 embodies a refined blend of modern architecture and warm, timeless design. Crafted with top-tier materials and attention to every detail, this exclusive residence offers **4 bedrooms, 3 bathrooms, and a guest toilet**, designed to elevate everyday living.

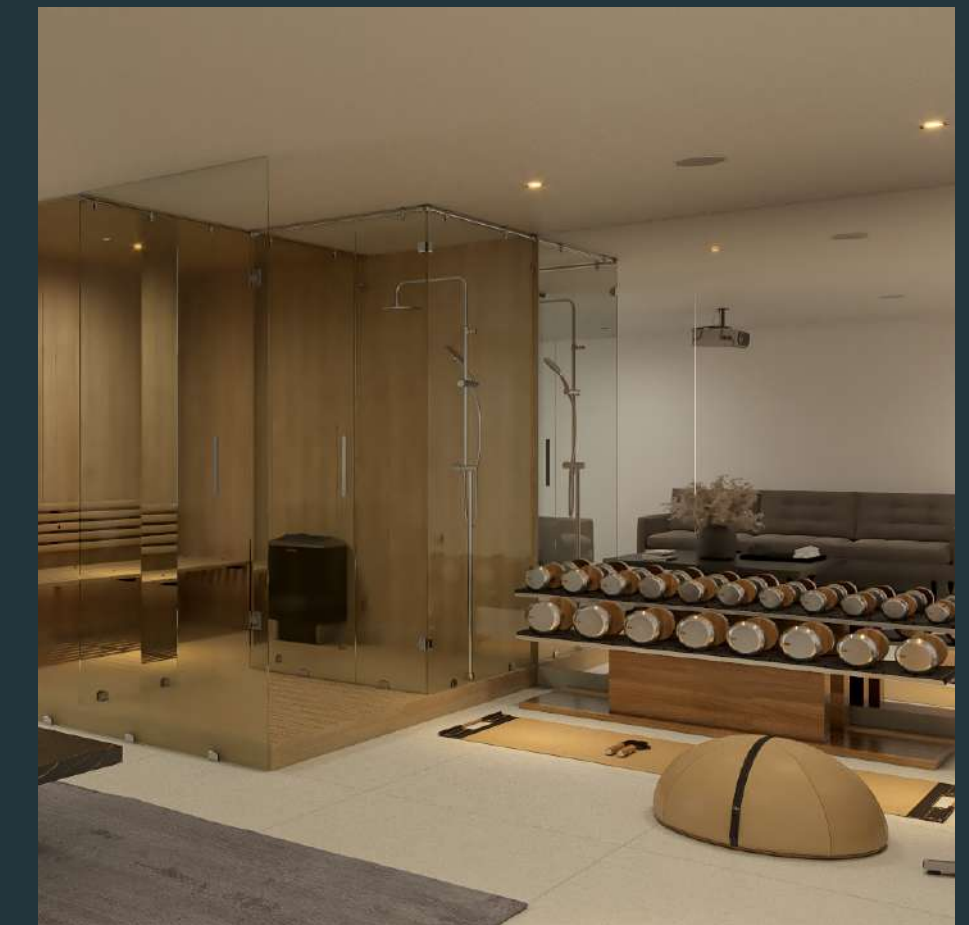
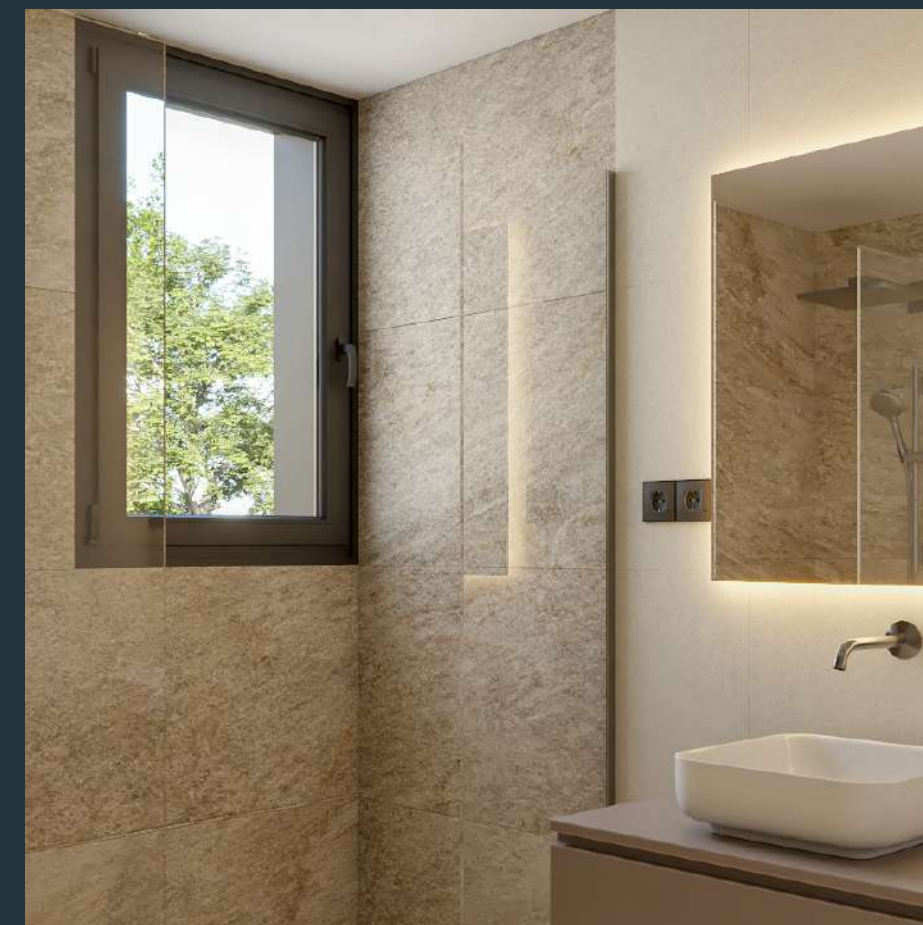
The **welcoming entrance hall** leads to a spacious open-concept living and dining area, where natural light flows through large windows and connects seamlessly with the porch and private swimming pool. The ground floor also features a versatile **guest bedroom or office**, a guest bathroom, and a fully equipped open-plan kitchen with a laundry area.

On the upper floor, the **master suite** offers a private retreat with a dressing room, en-suite bathroom, and access to a **generous terrace**. Two additional bedrooms and a shared bathroom complete this level, thoughtfully arranged to provide both privacy and functionality.

The villa also includes a **174.96 m² basement**, featuring a garage for two vehicles, a naturally multi-purpose room, a guest toilet, storage space, and a technical room—perfect for creating a gym, cinema, or wellness area tailored to your lifestyle.

Designed with your well-being in mind, Villa 5 integrates spaces that encourage balance and serenity. Whether you envision a state-of-the-art fitness studio, a yoga retreat, or a quiet reading lounge, the lower level adapts to your rhythm—offering you a home that supports both energy and calm.

Villa 5



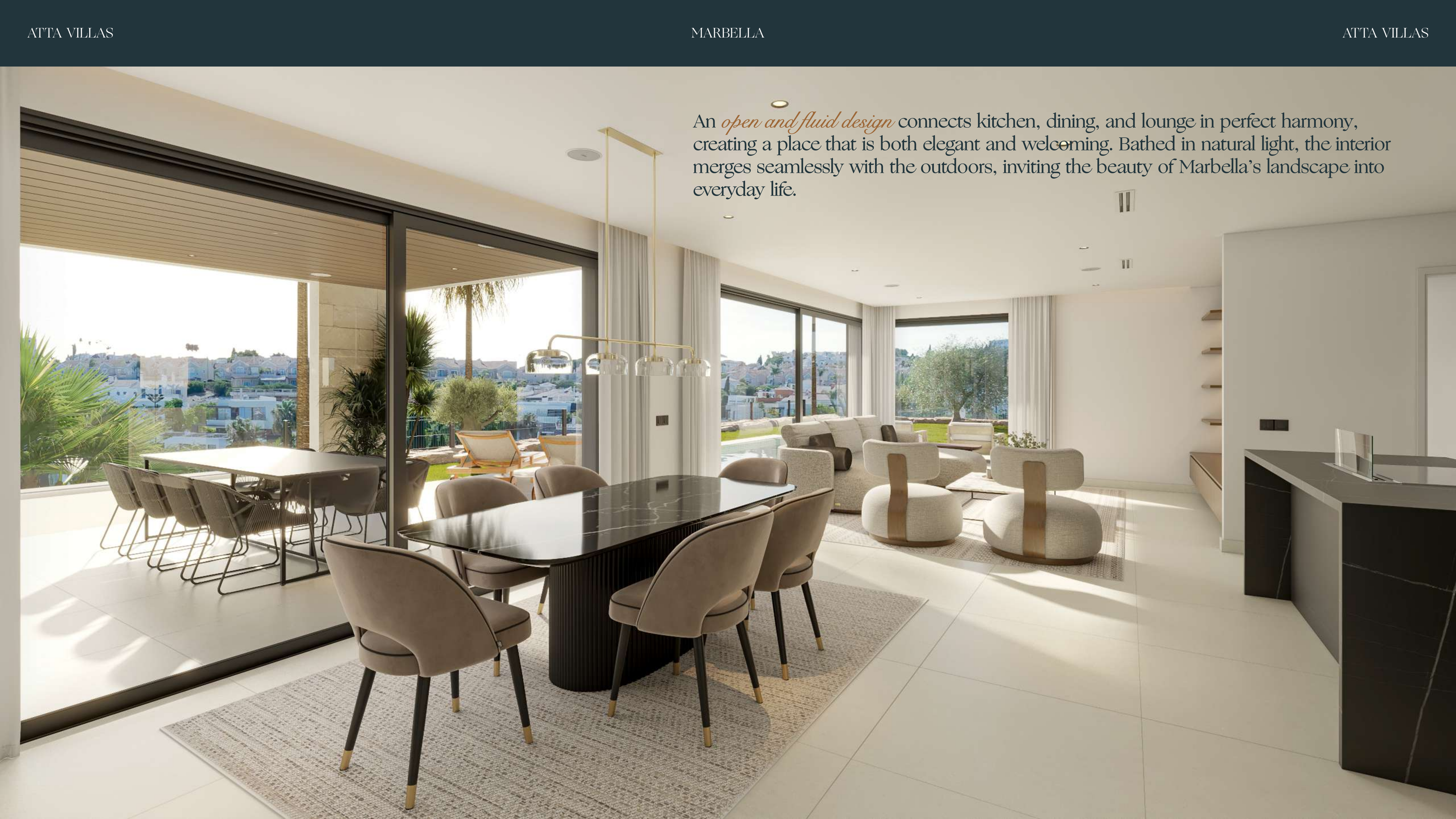


Villa 5

“
Your *private* retreat under the
Mediterranean sun,





A wide-angle photograph of a modern, open-plan living and dining area. The space is characterized by large windows and glass doors that offer a panoramic view of a swimming pool and a cityscape. The interior features a dining table with a dark, reflective top and light-colored chairs, a lounge area with a sofa and armchairs, and a kitchen area with a dark countertop. The lighting is a mix of natural light from the windows and modern pendant lights. The overall aesthetic is clean, bright, and sophisticated.

An *open and fluid design* connects kitchen, dining, and lounge in perfect harmony, creating a place that is both elegant and welcoming. Bathed in natural light, the interior merges seamlessly with the outdoors, inviting the beauty of Marbella's landscape into everyday life.



Bathed in the *golden glow* of the Mediterranean sun, every room is designed to capture natural light, creating warm, inviting spaces that change with the day.

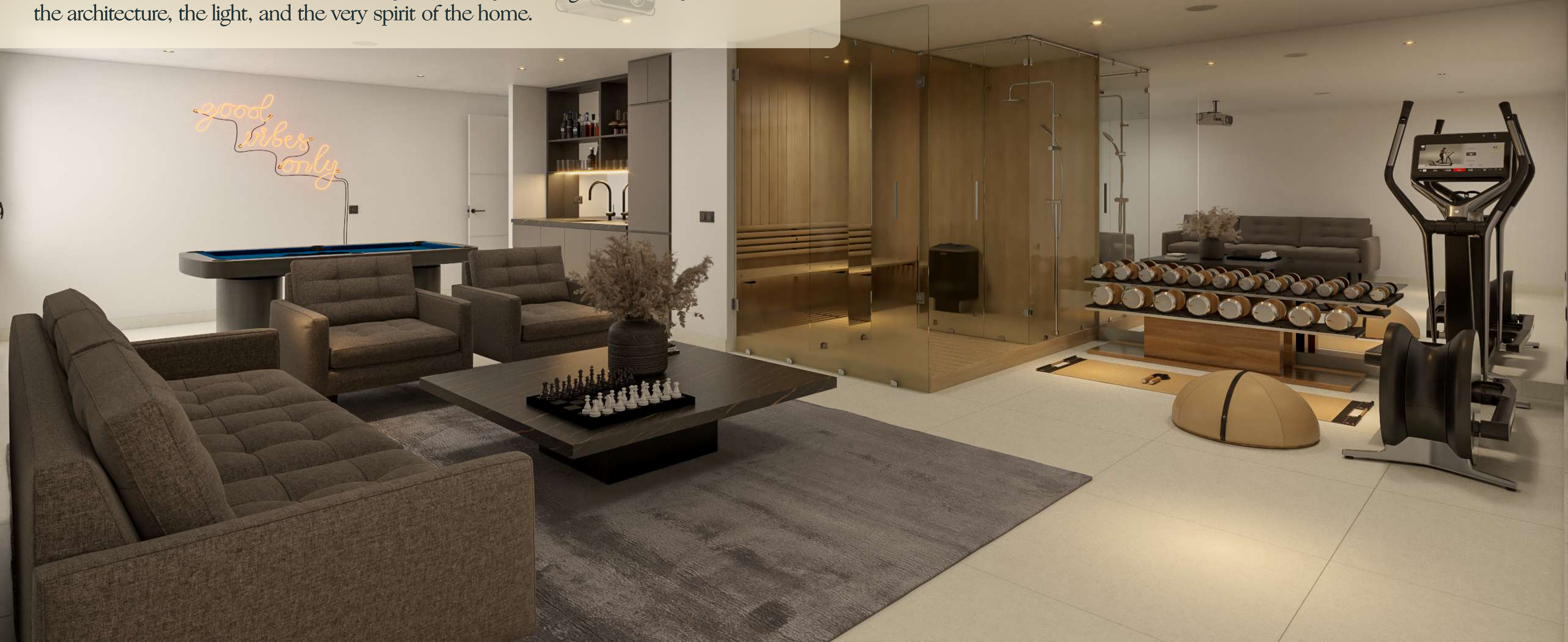
“
places where the day begins with *light* and ends with *calm*, surrounded
by an elegance that never fades,

Every detail speaks of quality:
bespoke cabinetry, natural stone surfaces,
and high-end fixtures chosen for both beau-
ty and performance.

Generous walk-in showers, freestanding
bathtubs, and carefully placed windows
transform daily rituals into moments of
indulgence.

Villa 5

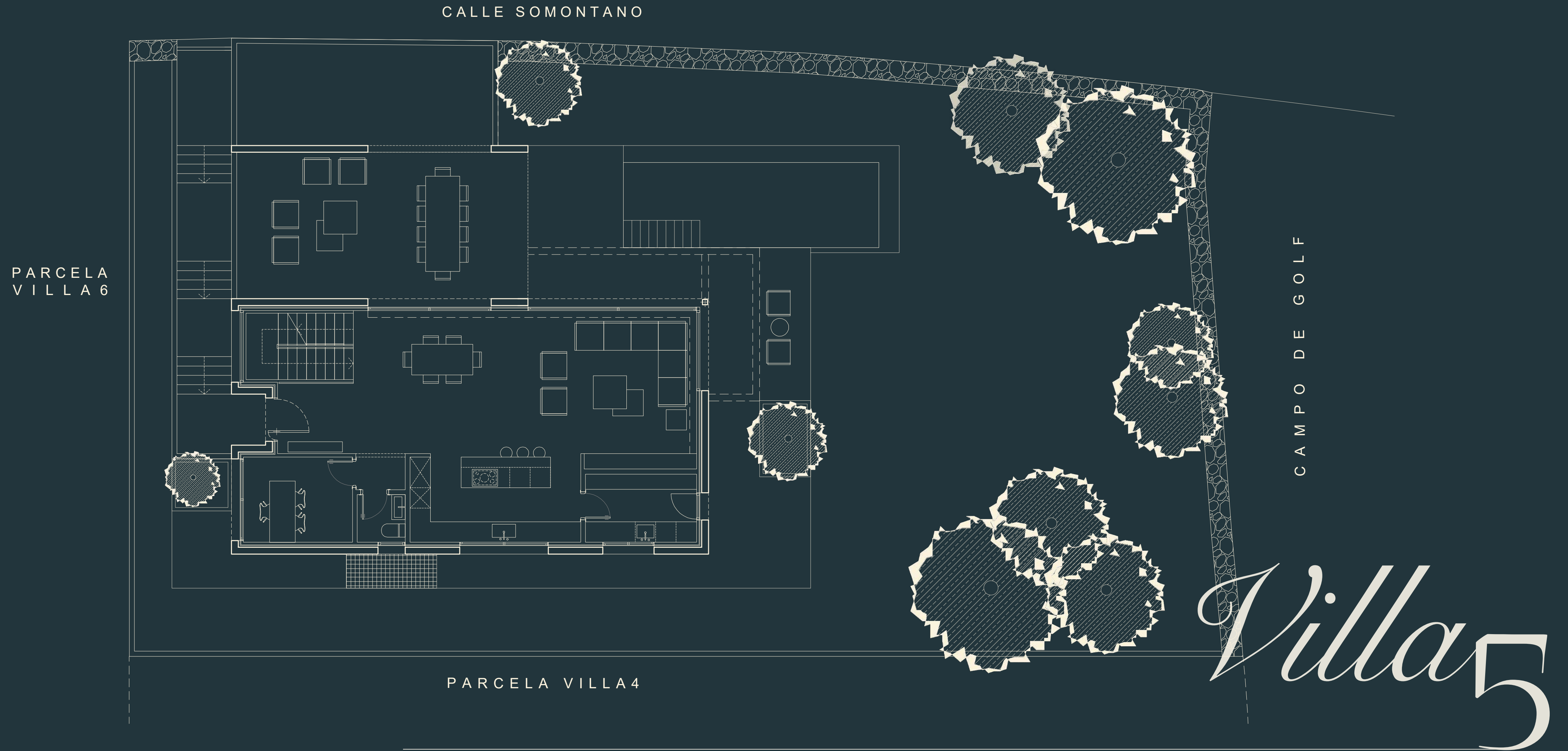
Thoughtfully designed spaces invite you to nurture both body and soul: from areas that inspire movement and vitality to serene corners that encourage stillness and reflection. Here, *wellness* is not an activity, but a way of living—seamlessly woven into the architecture, the light, and the very spirit of the home.





A sanctuary of *style* in the heart
of the Costa del Sol

Floor Plan 0

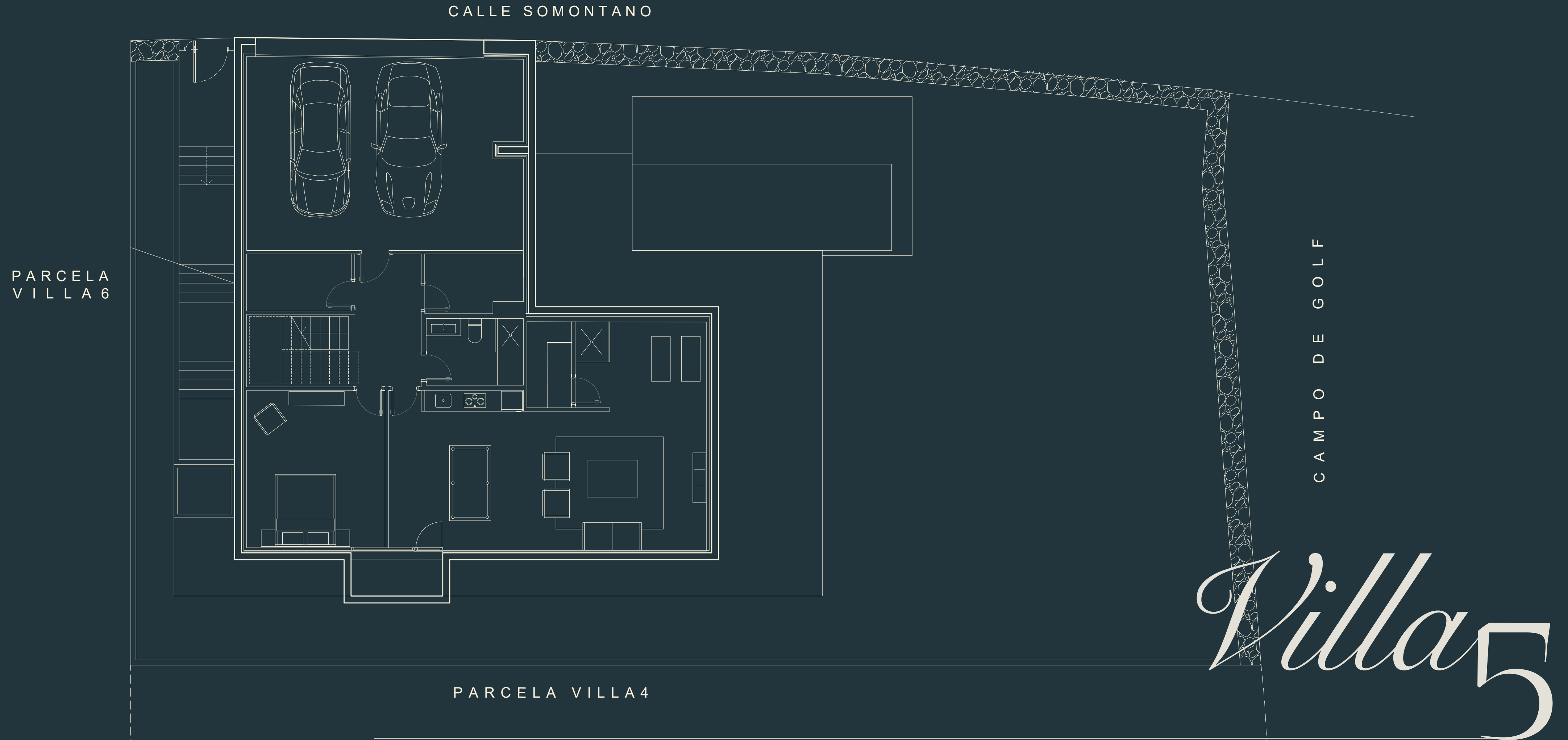


Floor Plan 1



Villa 5

Floor Plan -1



Specifications & finishes

INTERIOR FLOORING

Ground Floor & Basement

Continuous large-format porcelain stoneware 90x90 cm, model P KS ACRON IVORY REC, class 2. Elegance and durability in a contemporary finish that complements the villa's architecture.

Upper Floor

AC6 technical laminate flooring LAMINADO AQUA EICHE, specially selected for its compatibility with underfloor heating, NUDE finish. Warmth and comfort for the most private areas.

OUTDOOR FINISHES

Outdoor Flooring

Non-slip porcelain stoneware, class 3, model P KS ACRON IVORY REC, 90x90 cm format. Ensures visual continuity between indoor and outdoor spaces.

Porches & Terraces

The same finish is used throughout all outdoor living areas, ensuring elegance and safety in every corner of the property.

EFFICIENCY & SUSTAINABILITY

Commitment to the Environment

ATTA Villas reflect our commitment to sustainability and energy efficiency by incorporating:

Solar panels integrated into the architecture

Aerothermal climate control system

Smart home technology to optimise energy consumption

Materials selected for their durability and low environmental impact

Specifications & finishes

BATHROOM

1. Ground Floor Guest Toilet: Wall Coverings & Fittings

Walls: ACRON IVORY RC and NORDE PLATINO MAT (behind the basin), horizontal layout, 30x60 cm format.

Washbasin: Stone lacquer cabinet (80x50x45 cm) with small RESSTONE NELVA basin, matte stone lacquer finish.

Mirror: BORNEO TOUCH LED backlit mirror.

Tap: Built-in single-lever tap in matte black HG TALIS E.

Toilet: GAP ROUND RIMLESS wall-hung toilet with sigma20 black flush plate, MATT/BLACK finish.

2. Master Suite Bathroom

Main Features

Flooring: ACRON IVORY REC 90x90 cm

Walls: NORDE PLATINO MAT (shower) and ACRON IVORY RECT 60x120 cm, horizontal layout (remaining walls).

Shower Area

IMAGINE SMART shower tray in ACRON IVORY finish, with RAINDANCE E overhead shower (40x40 cm), SHOWER SELECT COMFORT S shower selector, and RAINFINITY 130 hand shower.

Furniture

Double cabinet (140x50x45 cm) in stone lacquer with small RESSTONE NELVA basins in matte stone lacquer finish, complemented by an OSLO LED mirror (140x80 cm).

Tap: Built-in AXOR ONE, brushed black chrome finish.

Toilet: GAP ROUND RIMLESS with sigma20 black flush plate, MATT/BLACK finish.

3. Shared Bathroom and Basement

Main Features

Washbasin: Stone lacquer cabinet (100x50x45 cm) with large RESSTONE NELVA basin in matte stone lacquer finish.

Tap: Built-in single-lever tap in matte black HG TALIS E.

Mirror: Circular backlit mirror (100 cm) ROMA TOUCH LED.

Toilet: GAP ROUND RIMLESS with black flush plate, MATT/BLACK finish.

Flooring: ACRON IVORY REC 90x90 cm

Shower walls: DASSEL OAK 40x120 cm, vertically installed

Remaining walls: ACRON IVORY RECT 40x120 cm, horizontal layout

Shower tray: IMAGINE SMART in ACRON IVORY finish

Fixed round shower head 240 RAINDANCE S // Hand shower RAINFINITY 130

Extras to Unlock



Custom Wine Cellar

A fully personalised wine cellar, designed to reflect your collection and lifestyle—elegant, climate-controlled, and seamlessly integrated into your villa.



Property Management & Luxury Vacation Services

Enjoy peace of mind year-round with full-service property management and premium holiday coordination, including:

- Pre-arrival concierge
- Grocery pre-stocking and fridge replenishment
- Home preparation and welcome setup
- Bespoke arrival experience
- Guest preferences configuration
- Exclusive white-glove housekeeping
- On-demand in-home concierge



Interior Design Services

Complete interior design solutions, from concept to execution—including furniture selection, spatial layout, and bespoke decor tailored to your taste.



Security System Installation

Professional surveillance system setup with video monitoring to ensure privacy, peace of mind, and 24/7 protection.



Fully Equipped Home Gym

Installation of a private fitness studio with premium equipment, designed for performance, comfort, and style—customisable to your wellness needs.

