



MÅNE
RESIDENCES

LAST UNITS



ETERNAL SEA VIEWS

THE PROJECT	4
UNIT 102	12
UNIT 2123	18
UNIT 2321	22
UNIT 5121	26
UNIT 5221	30
UNIT 5222	34



THE PROJECT

EL PROYECTO

Måne's common areas include multipurpose areas, water features and tropical inspired gardens that make Måne your luxury private resort!

Las zonas comunes de Måne incluyen zonas multiusos, zonas de agua y jardines de inspiración tropical que convierten a Måne en un resort privado de lujo.



ENJOY A HEALTHY LIFESTYLE

DISFRUTA DE UNA
VIDA SALUDABLE

At Mâne Residences, you can enjoy a healthy lifestyle by taking leisurely strolls through the lush gardens at sunset, swimming laps in the pool, or staying active in the fully equipped gym.

En Mâne Residences, podrás llevar un estilo de vida saludable con paseos relajantes por los jardines al atardecer, nadando en la piscina o haciendo ejercicio en el gimnasio totalmente equipado.



COMMON AREAS

AREAS COMUNES

Enjoy the Mediterranean lifestyle with common areas that blend relaxation, wellness, and luxury:

- Full equiped Gym
- Outdoor Pool
- Sunbed Lounges
- Versatile Multipurpose Areas
- Tropical-Inspired Outdoor Showers
- Tranquil Yoga Area
- Lush Landscaped Urban Gardens

Disfrutar del estilo de vida mediterráneo con zonas comunes que combinan relajación, bienestar y lujo:

- Gimnasio totalmente equipado
- Piscina al aire libre
- Zonas de tumbonas
- Espacios multifuncionales
- Duchas exteriores de inspiración tropical
- Área de yoga
- Jardines urbanos



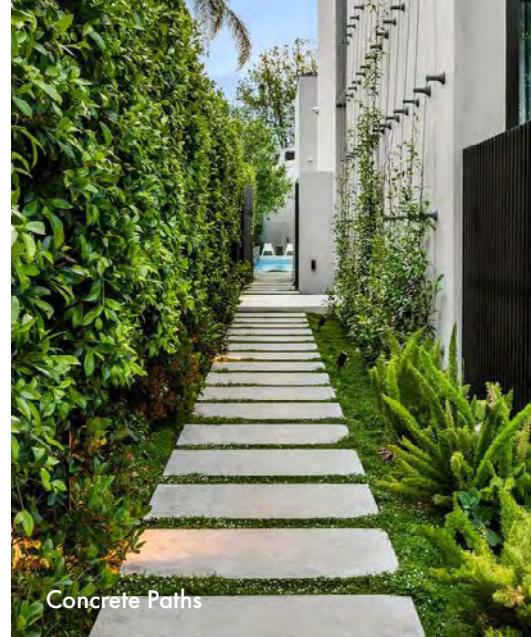
Multipurpose areas



Chill-Out Area



Urban Garden



Concrete Paths





LAST UNITS
ÚLTIMAS UNIDADES



UNIT 102

FULLY FURNISHED
SEMI-DETACHED

ADOSADA TOTALMENTE
AMUEBLADA

Discover Mane Residence’s crown jewel. This exclusive property combines absolute privacy with outdoor spaces designed for maximum use. It features a spectacular terrace with direct access to the living-dining room, an elegant fully equipped solarium, a large basement and two private gardens that elevate the outdoor experience.

Descubre la joya de la corona de Mane Residences. Esta exclusiva propiedad combina privacidad absoluta con espacios exteriores diseñados para el máximo aprovechamiento. Cuenta con una espectacular terraza con acceso directo al salón-comedor, un solárium completamente equipado, un amplio sótano y dos jardines privados que elevan la experiencia al aire libre.





282,74m²
Built Area



3
Bedrooms



4
Bathrooms



200m²
Outdoor Spaces



2
Parking Spaces

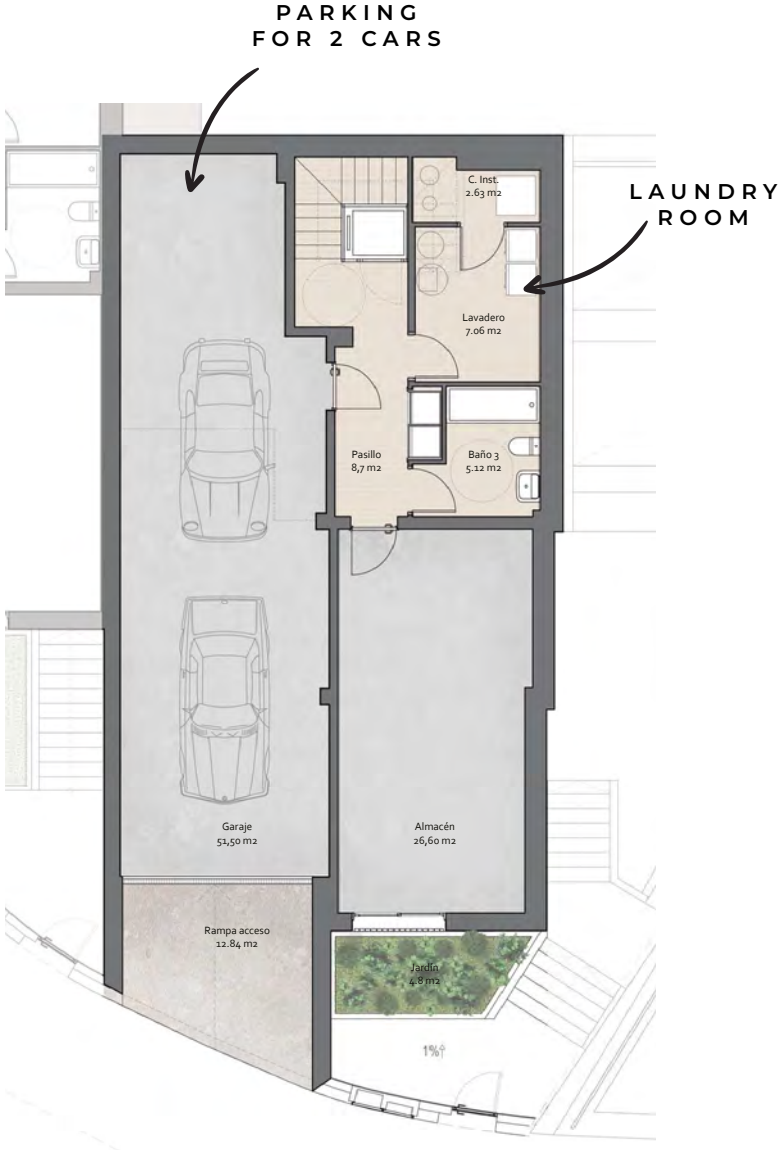




MR-102
3 BEDROOMS / 3 DORMITORIOS

4 FLOORS / 4 PLANTAS
- FULLY FURNISHED
- EXTRAS INCLUDED

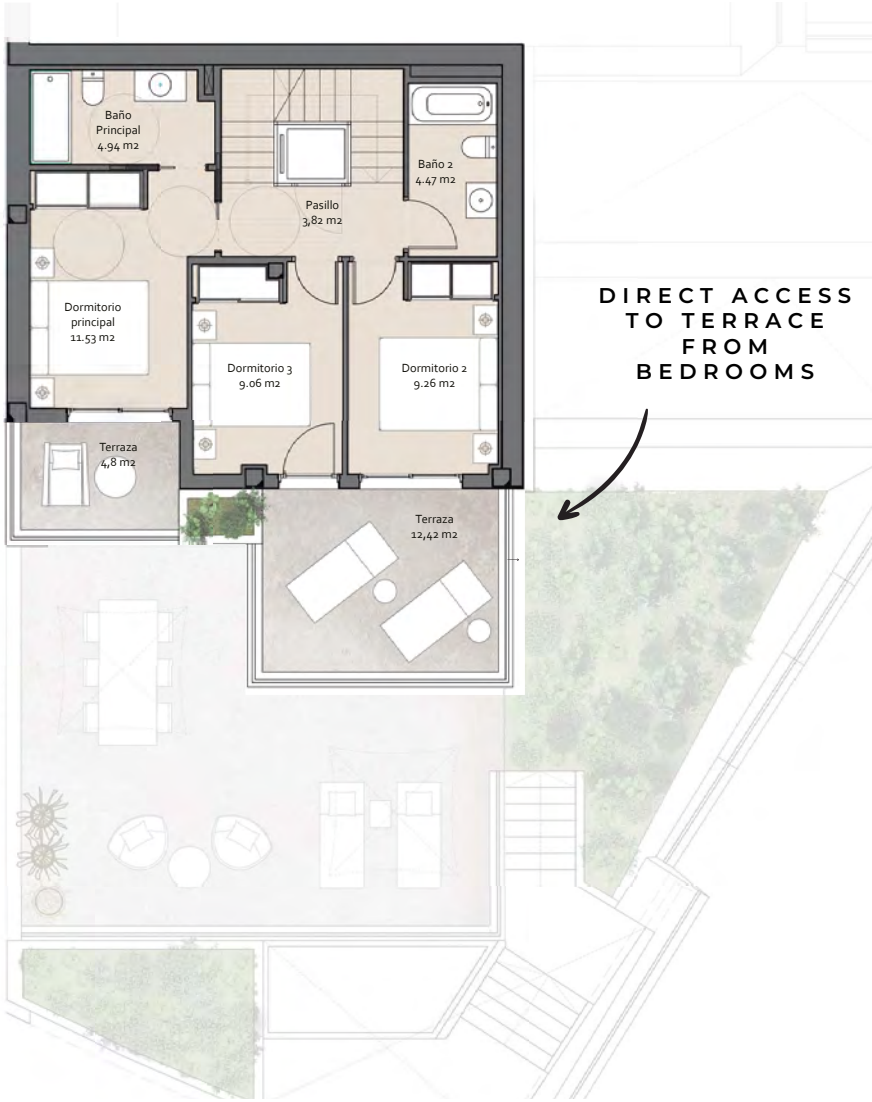
850.000€



BASEMENT



GROUND FLOOR



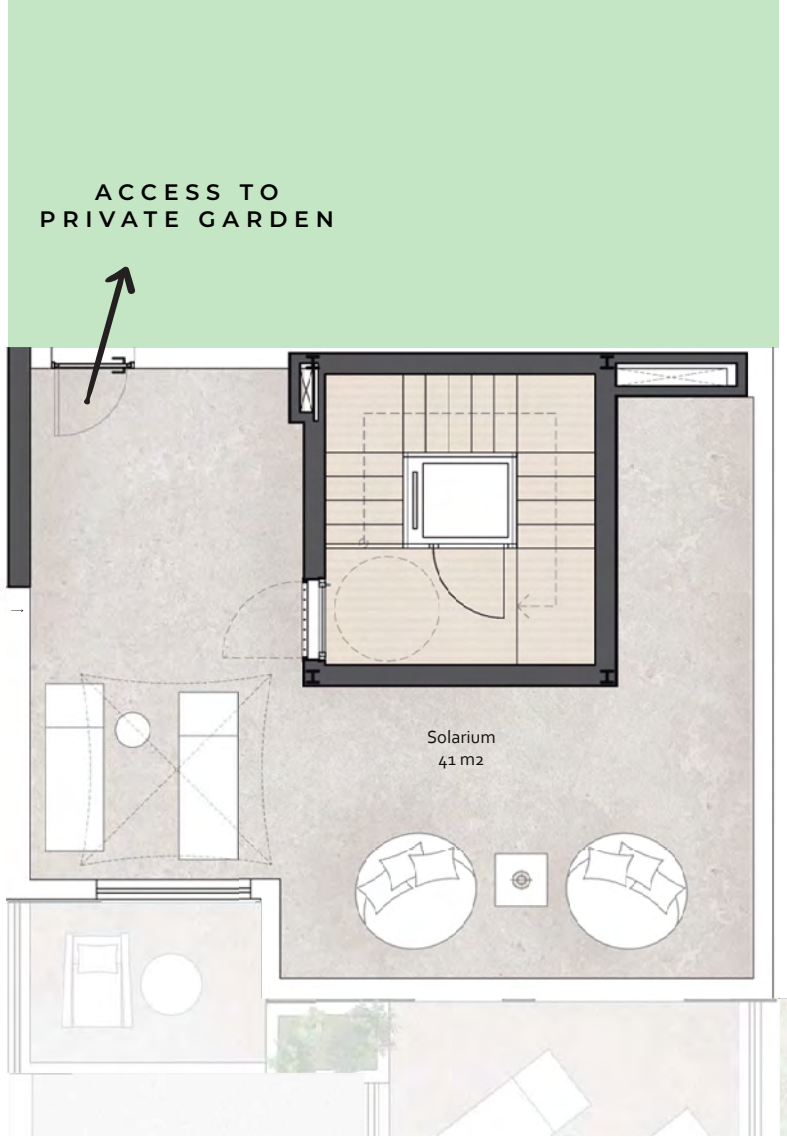
FIRST FLOOR



SPECIAL FEATURES
CARACTERÍSTICAS ESPECIALES

- Jacuzzi
- Pergola
- Outdoor Barbecue
- 100m² private outdoor space suitable for use as a spacious garden, organic urban garden, children's play area, outdoor dining or any other desired purpose.

- Jacuzzi
- Pérgola
- Barbacoa al aire libre
- Espacio exterior privado de 100 m², ideal como amplio jardín, huerto orgánico urbano, zona de juegos para niños, comedor al aire libre o cualquier otro uso.



SOLARIUM



jacuzzi, pergola & outdoor barbecue



100m2 versatile outdoor space



UNIT 2123

SIDE PENTHOUSE WITH THE BEST VIEWS OF BENALMADENA!

ÁTICO LATERAL CON LAS MEJORES VISTAS DE BENALMÁDENA




121,57m²
Built Area


3
Bedrooms


2
Bathrooms


42,20m²
Solarium


1
Parking Space

UNIT 2123

the views



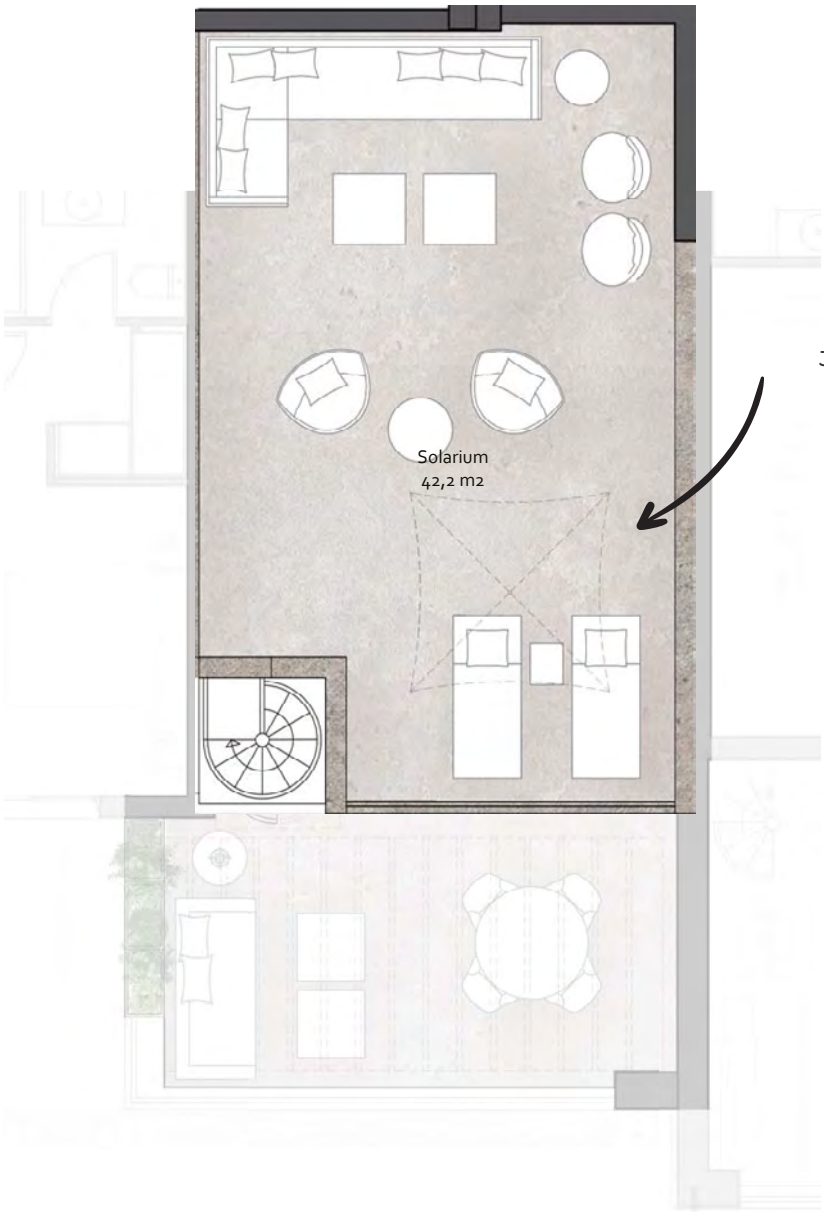


MR-2123
3 BEDROOMS / 3 DORMITORIOS

614.000€



FIRST FLOOR



SOLARIUM





UNIT 2321

PENTHOUSE WITH A SPECTACULAR SOLARIUM TO ENJOY THE MEDITERRANEAN CLIMATE

ÁTICO CON ESPECTACULAR SOLARIUM PARA DISFRUTAR DEL CLIMA MEDITERRÁNEO



121,32m²
Built Area



3
Bedrooms



2
Bathrooms



106,70m²
Solarium



1
Parking Space

UNIT 3213

the views



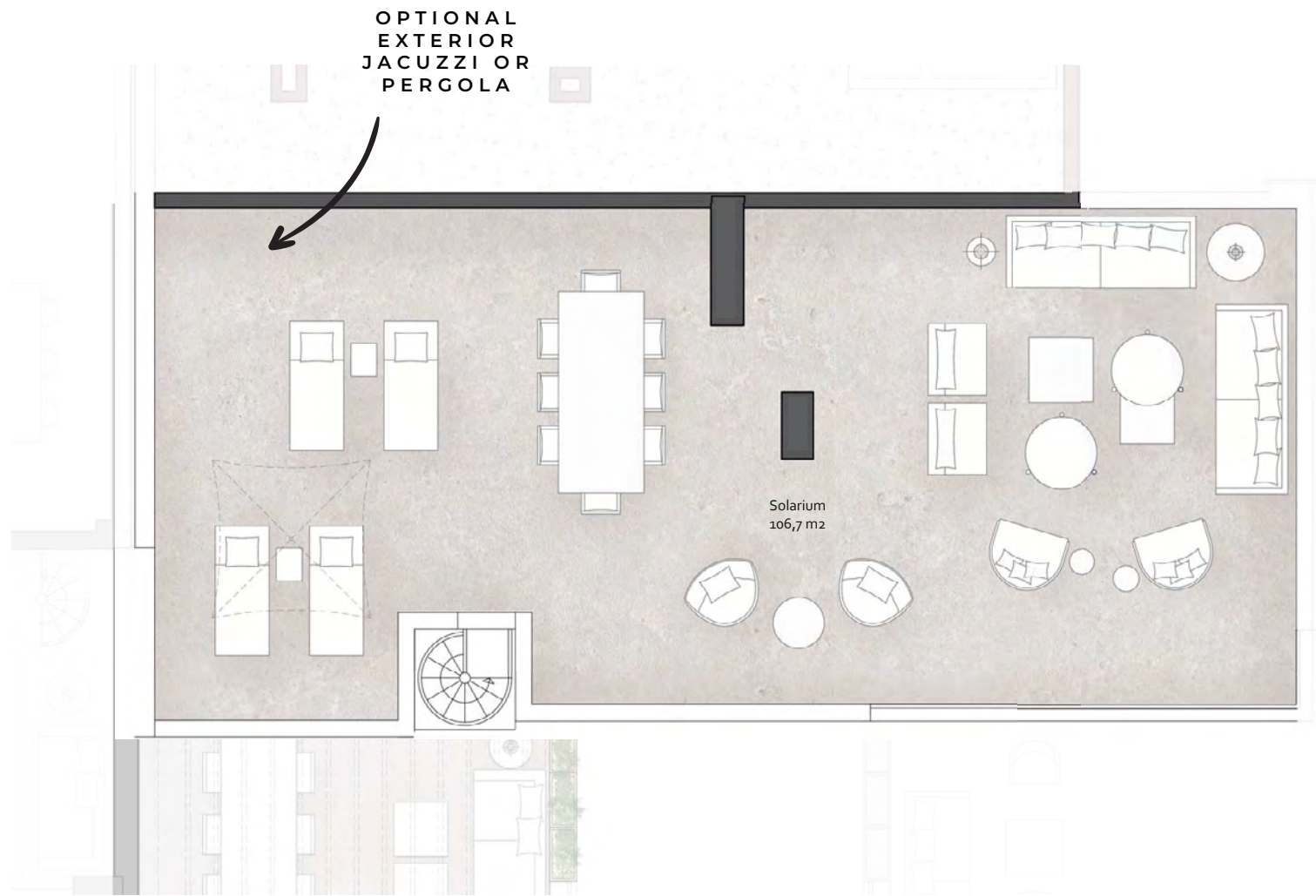


MR-2321
3 BEDROOMS / 3 DORMITORIOS

769.000€



FIRST FLOOR



SOLARIUM





UNIT 5121

CORNER PENTHOUSE WITH
VIEWS TO THE GARDENS
AND SEA

ÁTICO EN ESQUINA CON
VISTAS A LOS JARDINES
Y AL MAR




121,19m²
Built Area


3
Bedrooms


2
Bathrooms


58,05m²
Solarium


1
Parking Space

UNIT 5121

the views



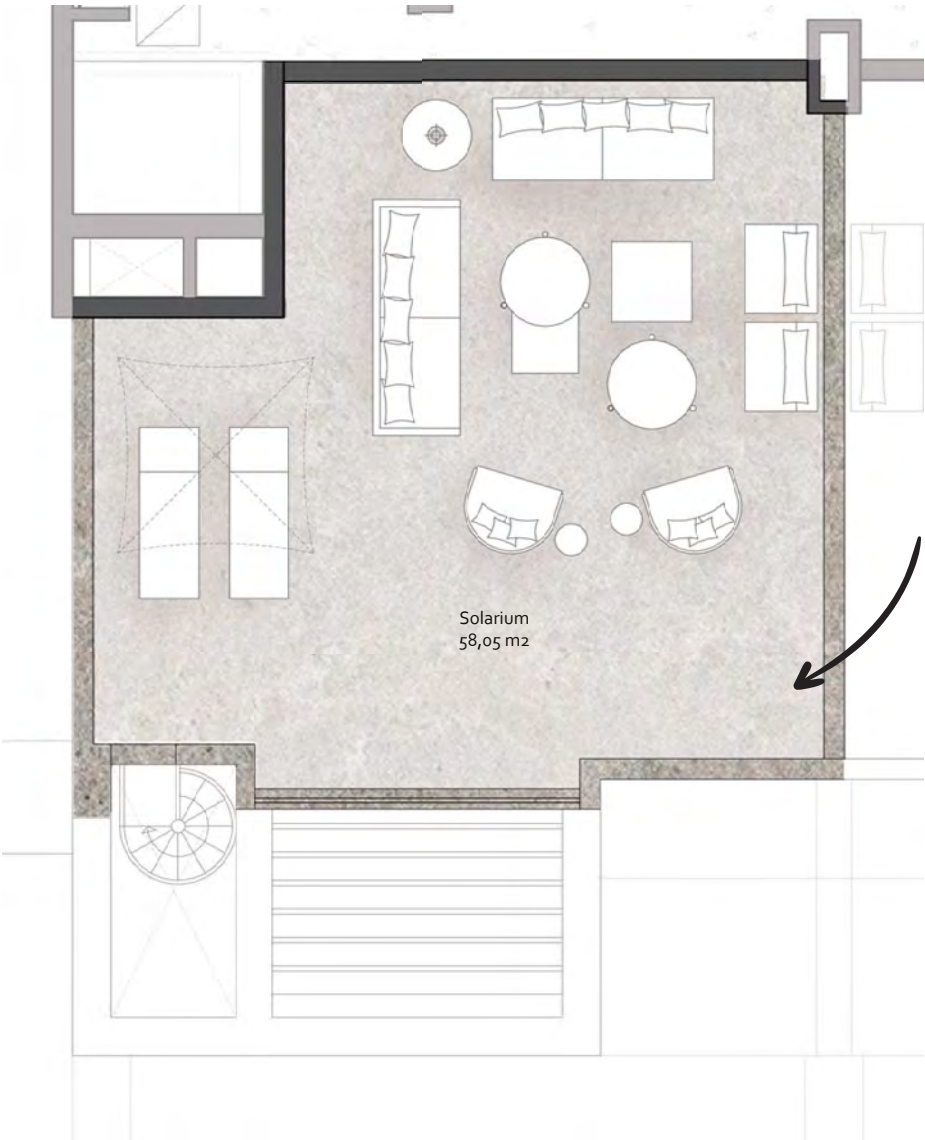


MR-5121
3 BEDROOMS / 3 DORMITORIOS

684.000€



FIRST FLOOR



SOLARIUM

OPTIONAL
EXTERIOR
JACUZZI OR
PERGOLA



UNIT 5221

PENTHOUSE WITH
FRONT-FACING SEA VIEWS

ÁTICO CON VISTAS FRONTALES
AL MAR



118,10m²
Built Area



3
Bedrooms



2
Bathrooms



58,01m²
Solarium



1
Parking Space





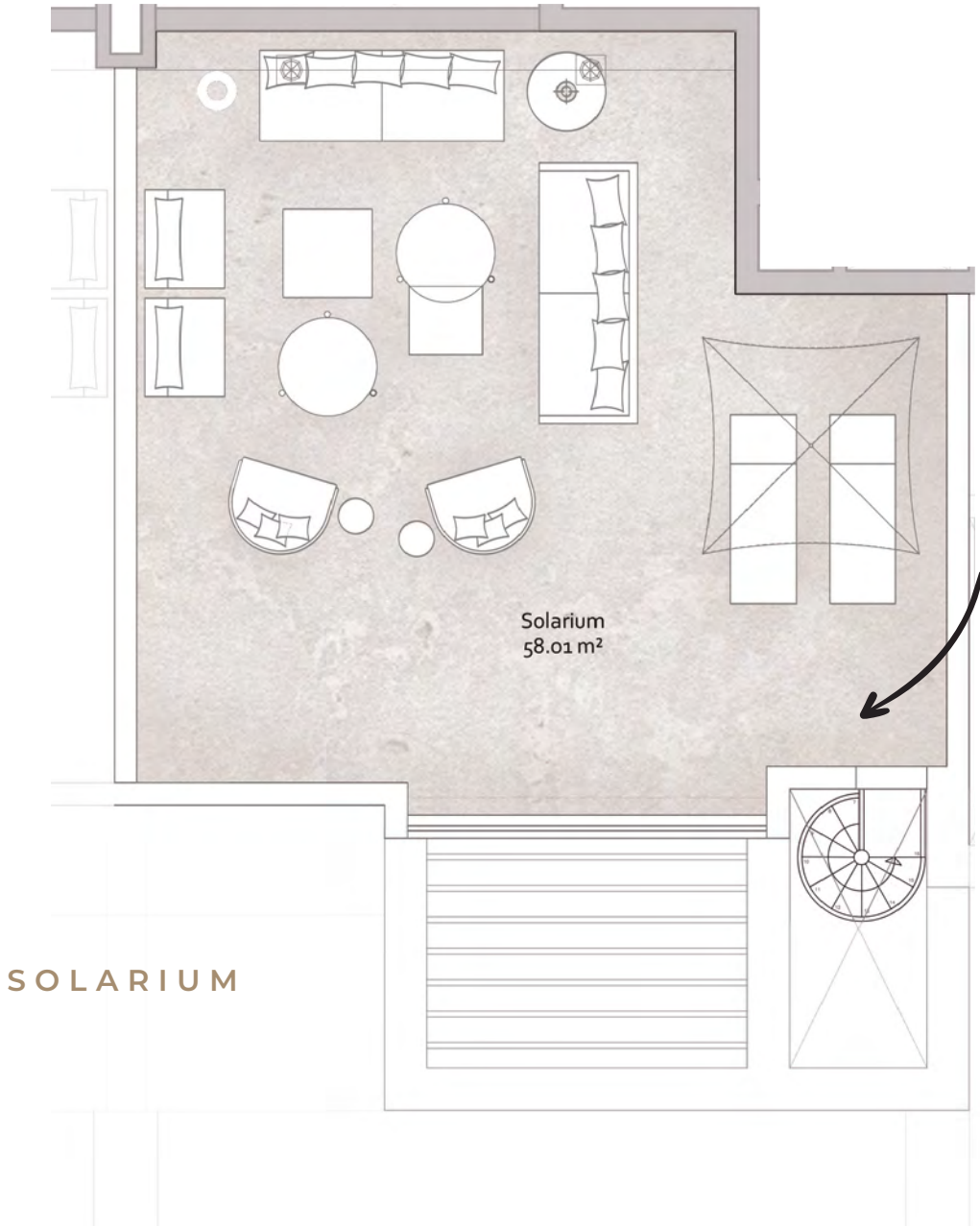
MR-5221
3 BEDROOMS / 3 DORMITORIOS

682.000€

PRIVATE
TERRACE
IN MASTER
ROOM



FIRST FLOOR



OPTIONAL
EXTERIOR
JACUZZI OR
PERGOLA




UNIT 5222


ENJOY PANORAMIC VIEWS OF THE MEDITERRANEAN FROM YOUR PRIVATE SOLARIUM

DISFRUTA DE LAS VISTAS AL MEDITERRANEO DESDE TU SOLARIUM PRIVADO







99,58m²
Built Area




2
Bedrooms



2
Bathrooms



82,85m²
Solarium



1
Parking Space

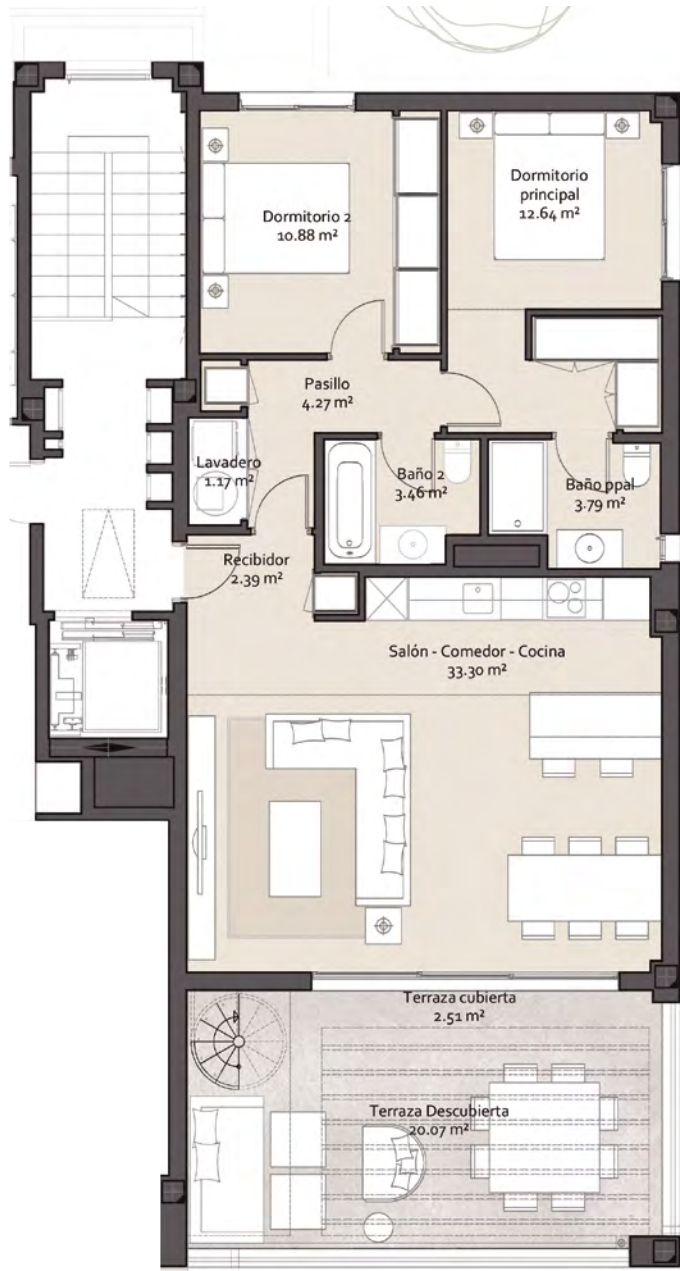
the views





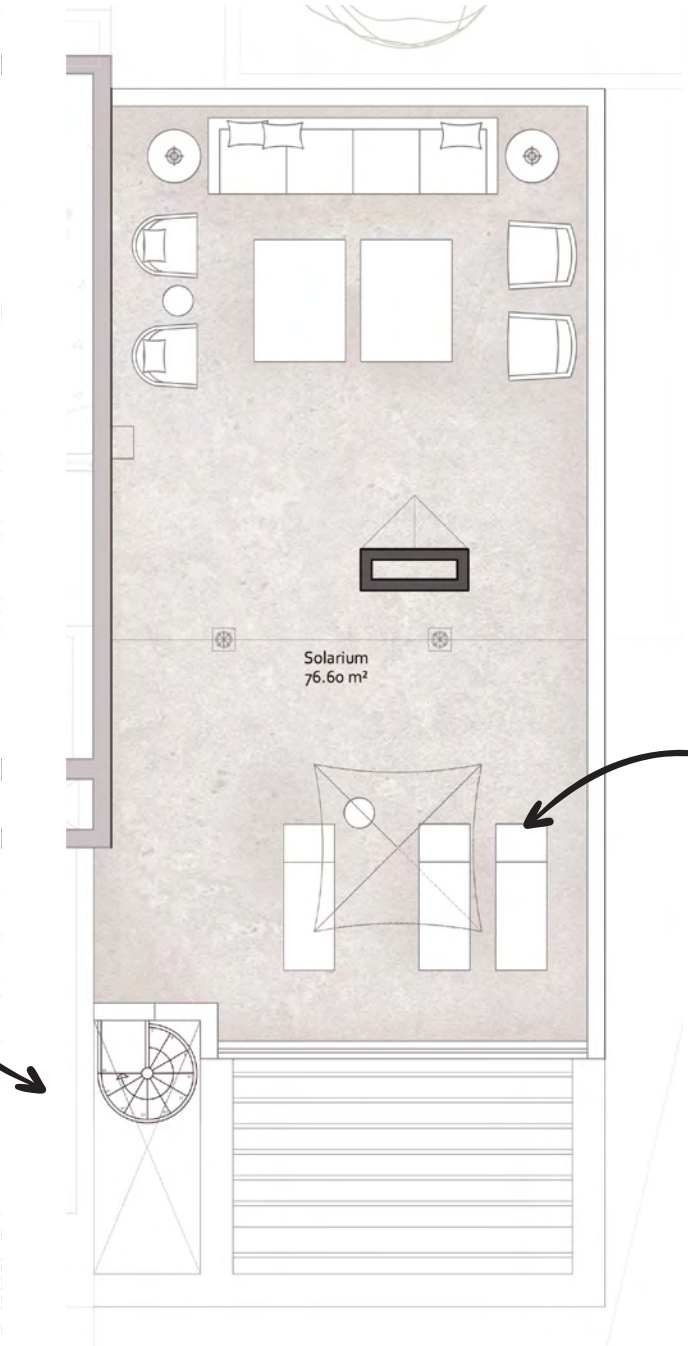
MR-5222
2 BEDROOMS / 2 DORMITORIOS

630.000€



FIRST FLOOR

PANORAMIC
SEA VIEWS



SOLARIUM

OPTIONAL
EXTERIOR
JACUZZI OR
PERGOLA



MANE

RESIDENCES

Developed by

guguhome

Commercialised by

**1 Prime
Invest**

