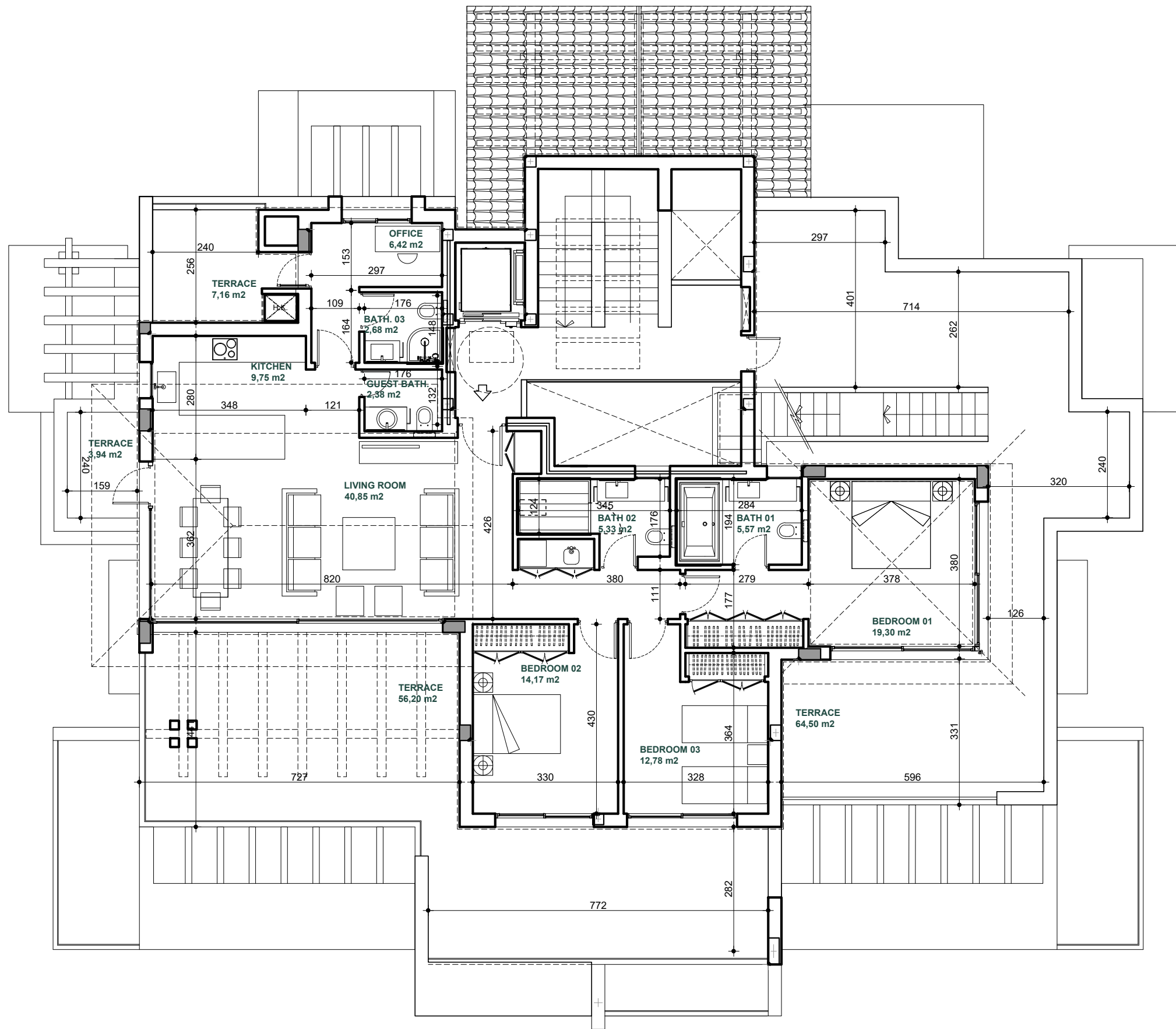
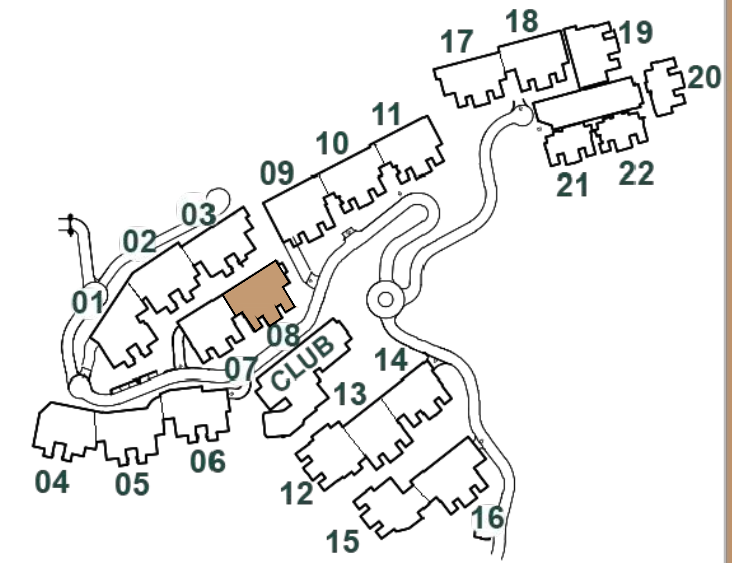


APARTMENT 8.2

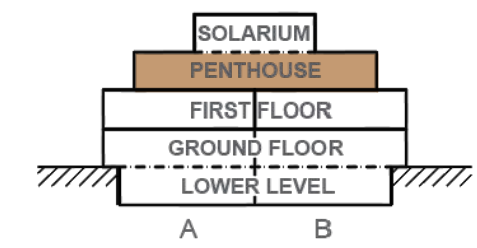
3 BEDROOMS



Site Plan

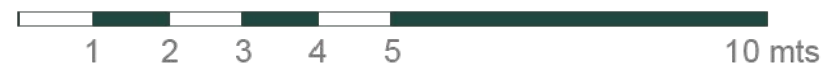


Block 08



Apartment 8.2

| | |
|-------------------------|-----------------------------|
| Apartment area | 119.27 m ² |
| Terrace | 131.60 m ² |
| Solarium | 60.66 m ² |
| Usable Area | 311.53 m² |
| Apartment area | 142.75 m ² |
| Terrace | 144.98 m ² |
| Solarium | 69.93 m ² |
| Constructed Area | 357.66 m² |
| Common Area | 26.05 m ² |



E: 1/100

This document is for information only. The areas and measurements shown are approximate and may be modified for technical reasons and/or administrative issues. All furniture shown is for illustrative purposes.

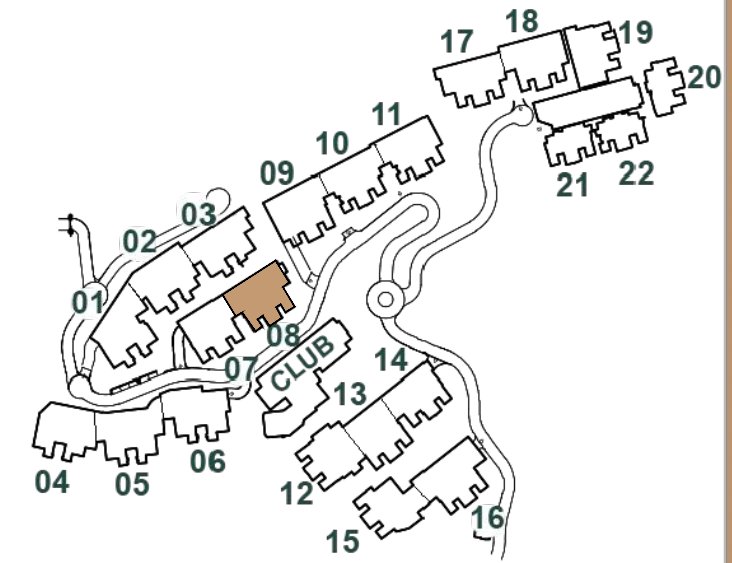


Marbella Club Hills · BENAHAIVIS ·

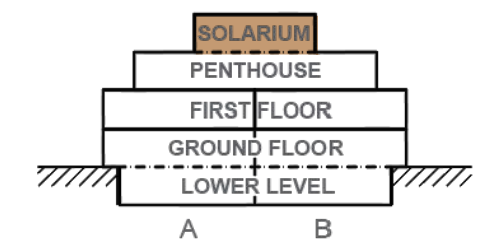


APARTMENT 8.2 - SOLARIUM 3 BEDROOMS

Site Plan

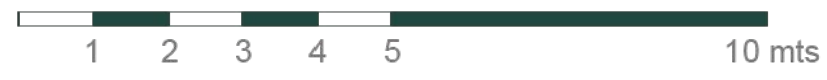
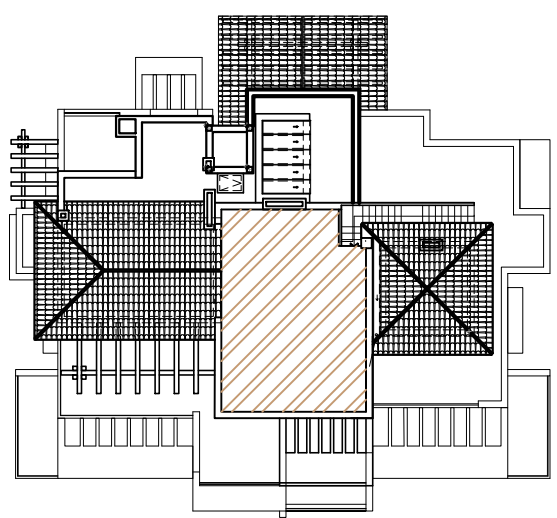
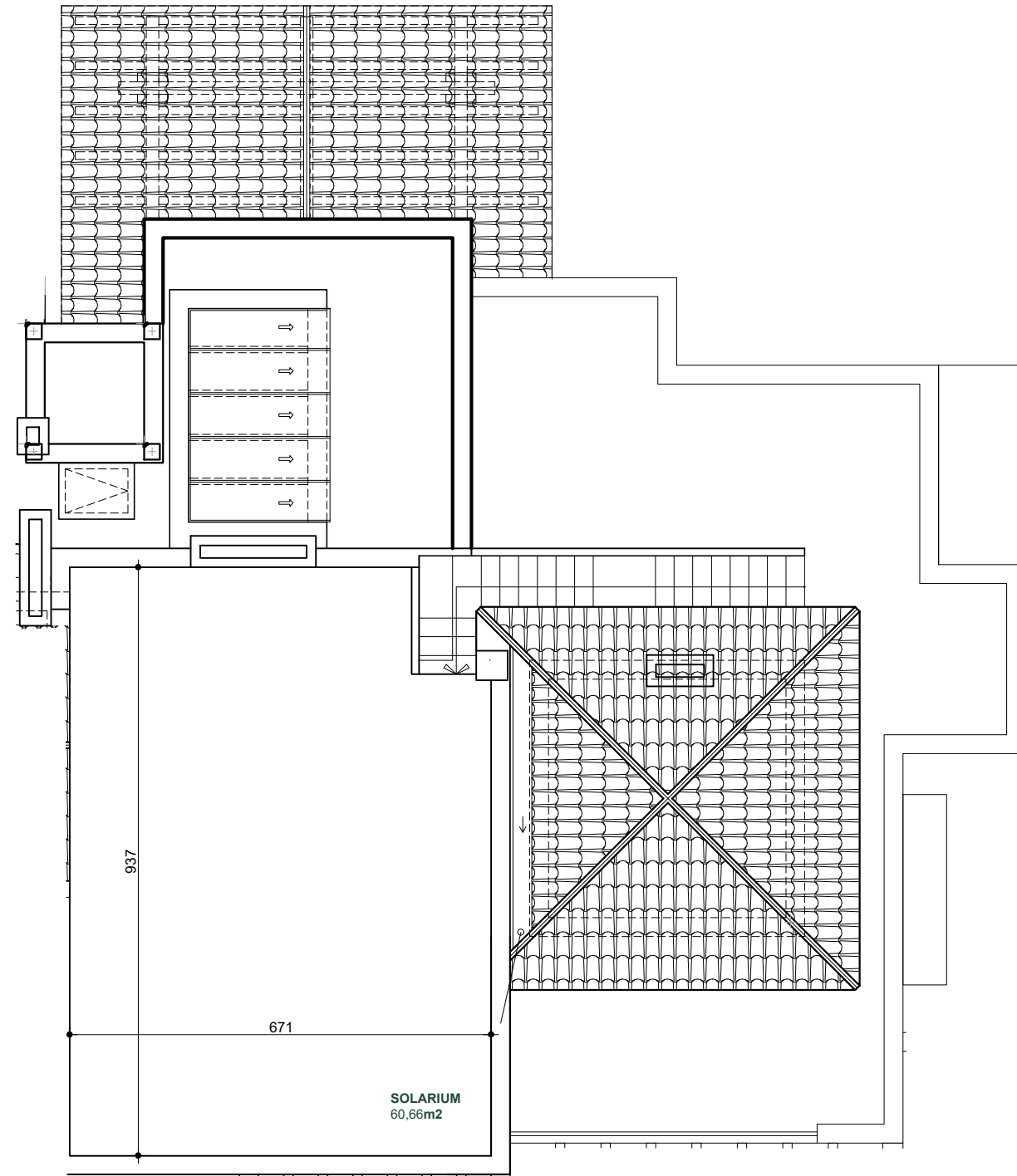


Block 08



Apartment 8.2

| | |
|-------------------------|-----------------------------|
| Apartment area | 119.27 m ² |
| Terrace | 131.60 m ² |
| Solarium | 60.66 m ² |
| Usable Area | 311.53 m² |
| Apartment area | 142.75 m ² |
| Terrace | 144.98 m ² |
| Solarium | 69.93 m ² |
| Constructed Area | 357.66 m² |
| Common Area | 26.05 m ² |



E: 1/100

This document is for information only. The areas and measurements shown are approximate and may be modified for technical reasons and/or administrative issues. All furniture shown is for illustrative purposes.



Marbella Club Hills · BENAHAIVIS ·

