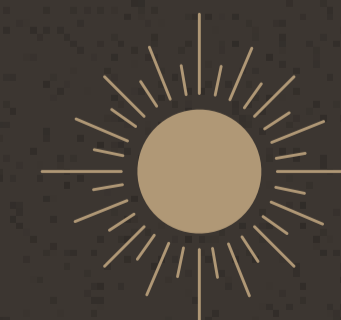
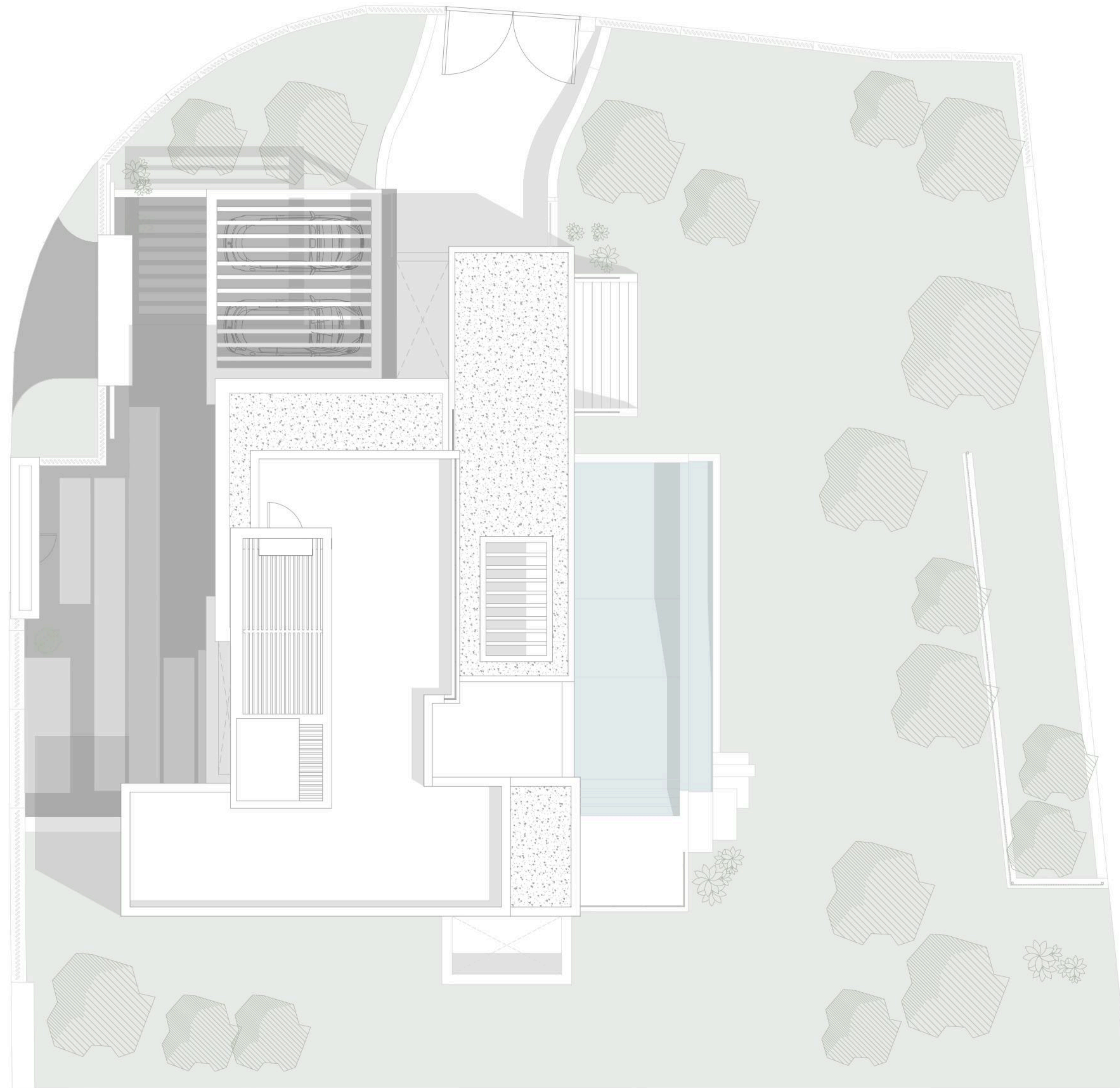
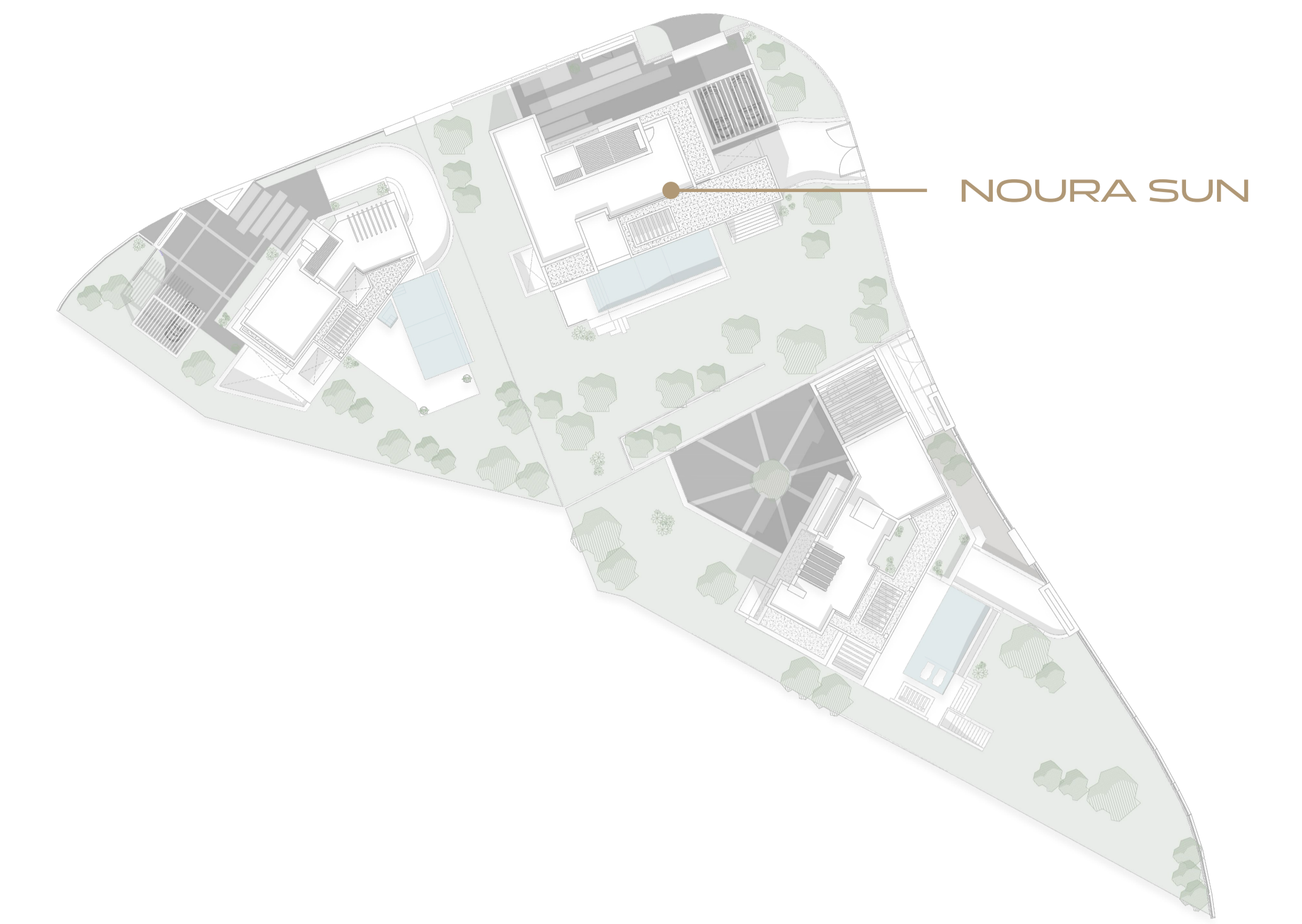


# NOURA SUN

IN THE HEART OF THE GOLDEN MILE



# NOURA SUN



## GENERAL INFORMATION

Type	Villa
Location	Lomas del Virrey de Marbella, Golden Mile
Beds	5
Bathrooms	5+2

**PLOT 1.208,18 m<sup>2</sup>**

## BUILT AREA

Interior	593,40 m <sup>2</sup>
Exterior	476,57 m <sup>2</sup>
Total Built	1069,97 m <sup>2</sup>

This plan may be modified depending on progress of the development. The furniture shown is purely for decorative purposes. The project manager reserves the right to make he necessary changes for any possible functional, aesthetic and legal reasons, without this negatively affecting the quality of the construction. Illustrative dimensions

# BASEMENT

SOLARIUM
1
0
-1

# NOURA SUN

5 BEDS PLOT 1.208,18 m<sup>2</sup>  
BUILT 1.066,44 m<sup>2</sup>

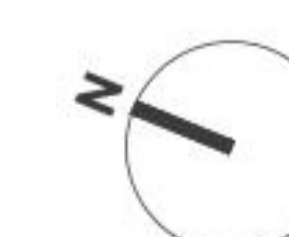
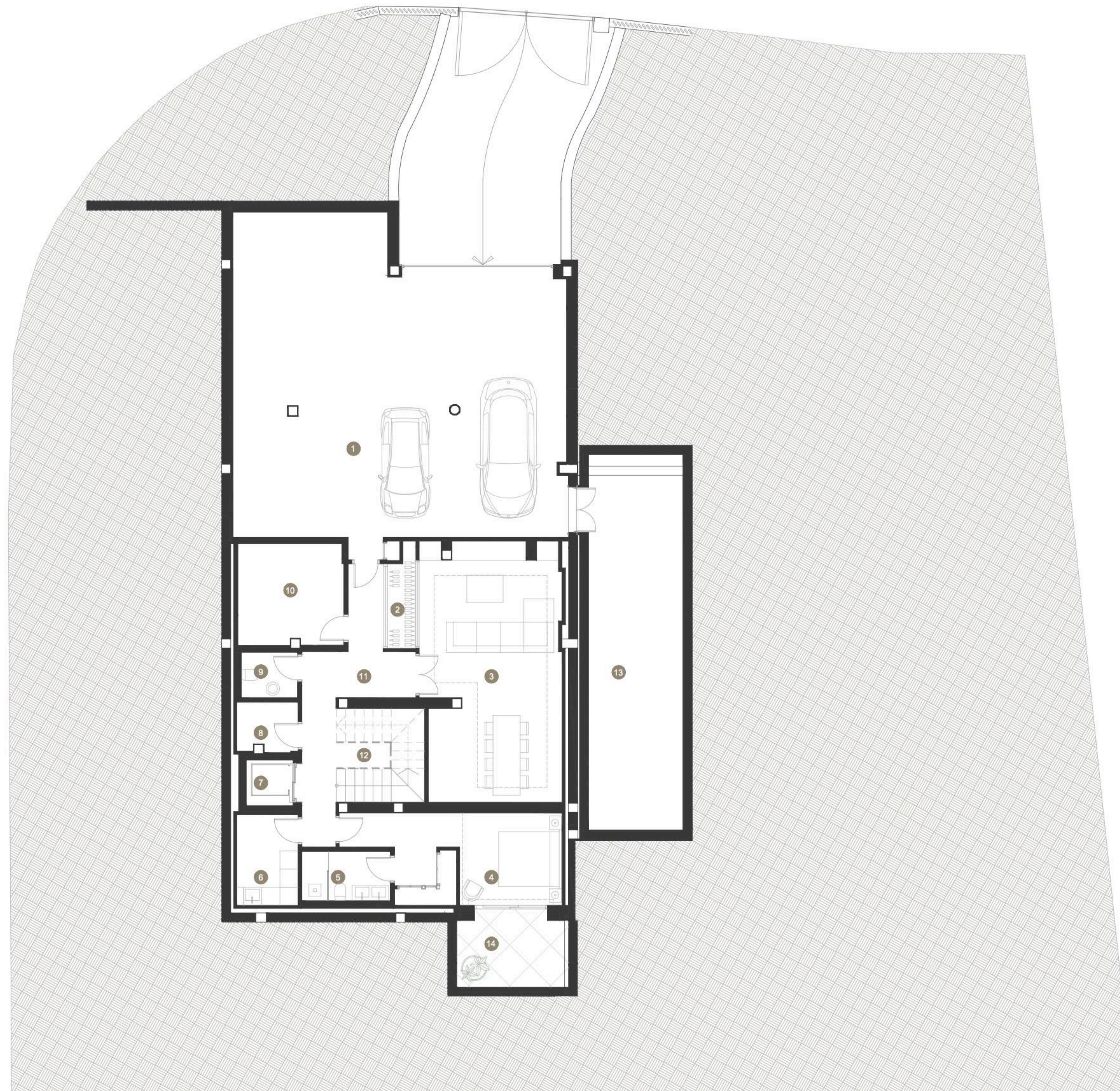
## USABLE AREA

### INTERIORS 261,48 m<sup>2</sup>

N°	Name	m <sup>2</sup> / sqm
01	Garage	105,87
02	Wine Cellar	3,06
03	Cinema Room	38,83
04	Bedroom 5	18,47
05	Bathroom	4,75
06	Laundry room	6,08
07	Lift	2,33
08	Installation rack	3,23
09	Toilet 2	2,79
10	Storage room	11,62
11	Corridor	14,62
12	Stairs	9,07
13	Installation room	40,76
<b>Total</b>		<b>261,48</b>

### EXTERIORS 9,05 m<sup>2</sup>

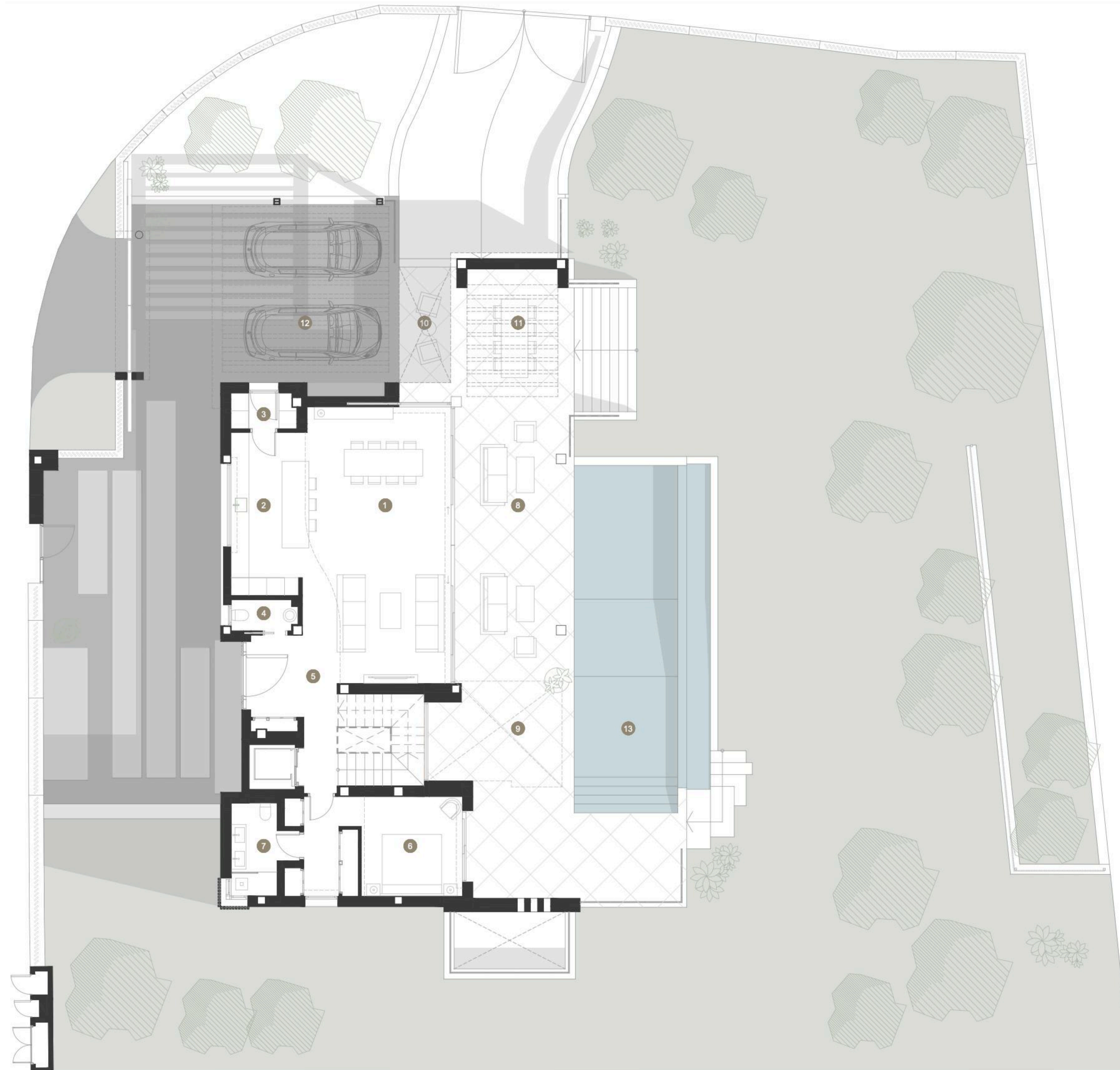
N°	Name	m <sup>2</sup> / sqm
14	Patio	9,05
<b>Total</b>		<b>9,05</b>



This plan may be modified depending on progress of the development. The furniture shown is purely for decorative purposes. The project manager reserves the right to make he necessary changes for any possible functional, aesthetic and legal reasons, without this negatively affecting the quality of the construction. Illustrative dimensions

# GROUND FLOOR

SOLARIUM
1
0
-1



# NOURA SUN

5 BEDS PLOT 1.208,18 m<sup>2</sup>  
BUILT 1.066,44 m<sup>2</sup>

## USABLE AREA

### INTERIORS 107,39 m<sup>2</sup>

N°	Name	m <sup>2</sup> / sqm
01	Living room	43,62
02	Kitchen	13,88
03	Dirty kitchen	2,62
04	Toilet 1	2,25
05	Corridor & stairs	20,64
06	Bedroom 4	18,79
07	Bathroom 4	5,59
<b>Total</b>		<b>107,39</b>

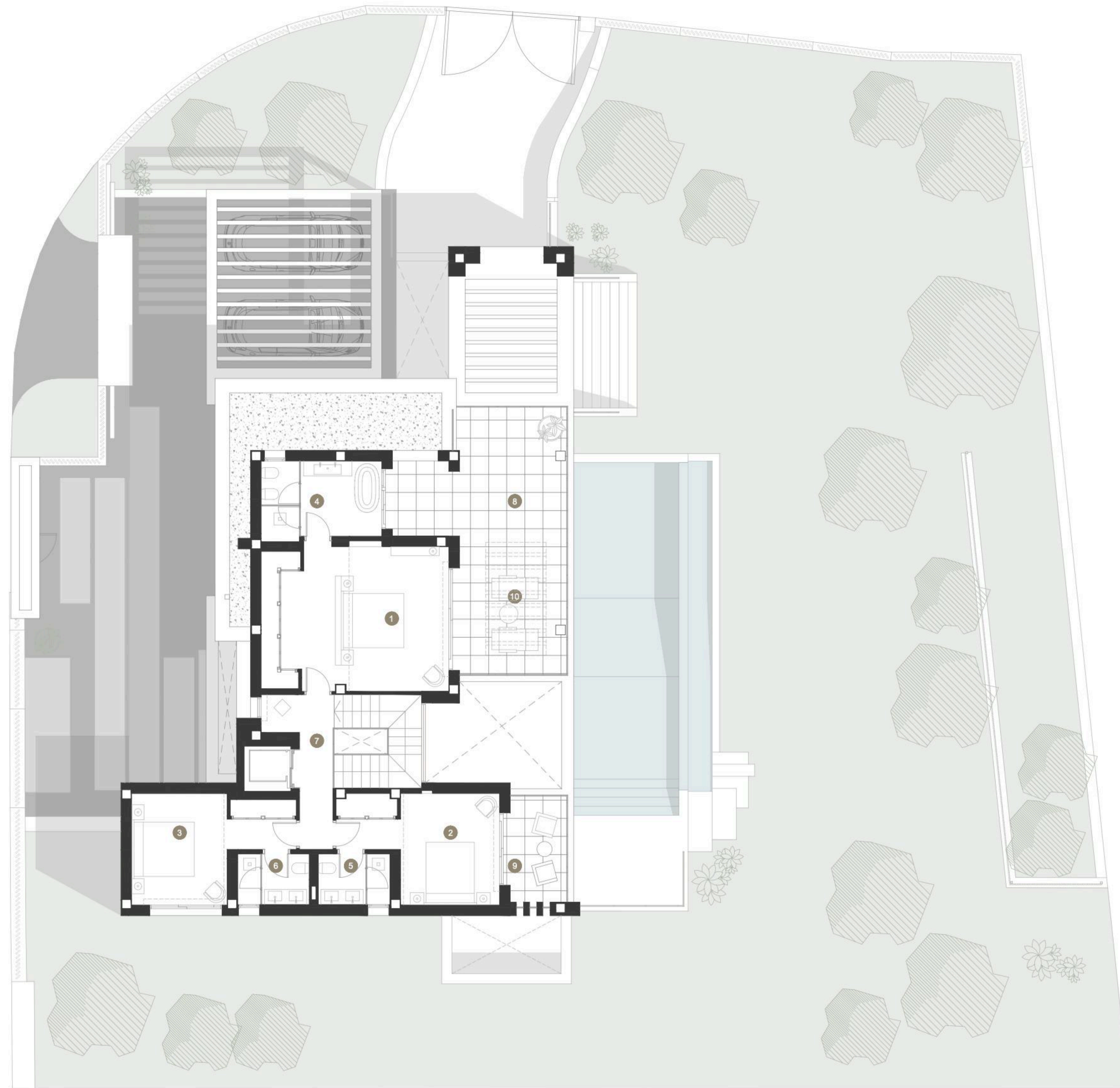
### EXTERIORS 182,73 m<sup>2</sup>

N°	Name	m <sup>2</sup> / sqm
08	Covered terrace 1	70,91
09	Open terrace 1	14,70
10	Open terrace 2	6,75
11	Pergolade terrace 1	11,10
12	Pergolade terrace 2	39,55
13	Infinity pool	39,72
<b>Total</b>		<b>182,73</b>

This plan may be modified depending on progress of the development. The furniture shown is purely for decorative purposes. The project manager reserves the right to make he necessary changes for any possible functional, aesthetic and legal reasons, without this negatively affecting the quality of the construction. Illustrative dimensions

# FIRST FLOOR

SOLARIUM
1
0
-1



# NOURA SUN

5 BEDS PLOT 1.208,18 m<sup>2</sup>  
BUILT 1.066,44 m<sup>2</sup>

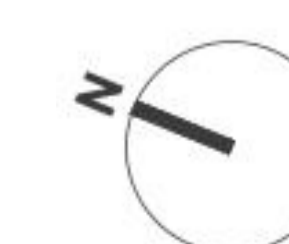
## USABLE AREA

### INTERIORS 86,05 m<sup>2</sup>

N°	Name	m <sup>2</sup> / sqm
01	Master bedroom	29,32
02	Bedroom 2	15,80
03	Bedroom 3	15,28
04	Master bathroom	10,25
05	Bathroom 2	3,99
06	Bathroom 3	3,99
07	Corredor	7,42
<b>Total</b>		<b>86,05</b>

### EXTERIORS 46,35 m<sup>2</sup>

N°	Name	m <sup>2</sup> / sqm
08	Covered terrace 1	31,38
09	Covered terrace 2	7,47
10	Pergolade terrace 1	7,50
<b>Total</b>		<b>46,35</b>



This plan may be modified depending on progress of the development. The furniture shown is purely for decorative purposes. The project manager reserves the right to make he necessary changes for any possible functional, aesthetic and legal reasons, without this negatively affecting the quality of the construction. Illustrative dimensions

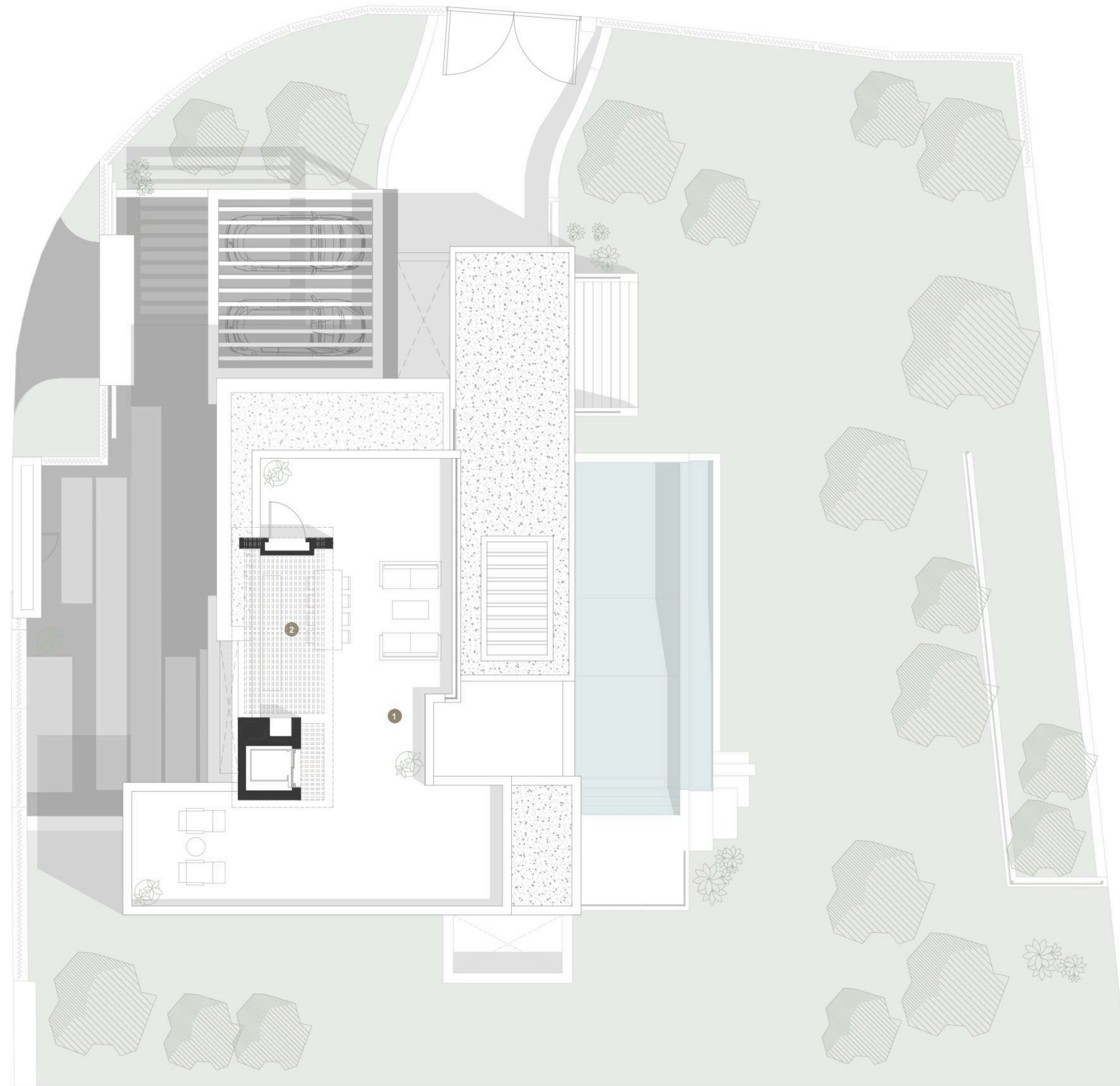
# SOLARIUM

SOLARIUM
1
0
-1

# NOURA SUN

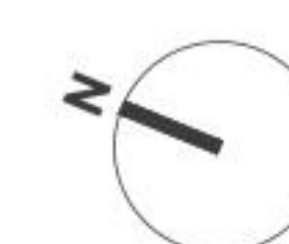
5 BEDS PLOT 1.208,18 m<sup>2</sup>  
BUILT 1.066,44 m<sup>2</sup>

## USABLE AREA



## EXTERIORS 101,19 m<sup>2</sup>

N°	Name	m <sup>2</sup> / sqm
01	Open terrace 1	83,89
02	Pergolade terrace 1	17,30
<b>Total</b>		<b>101,19</b>



This plan may be modified depending on progress of the development. The furniture shown is purely for decorative purposes. The project manager reserves the right to make he necessary changes for any possible functional, aesthetic and legal reasons, without this negatively affecting the quality of the construction. Illustrative dimensions