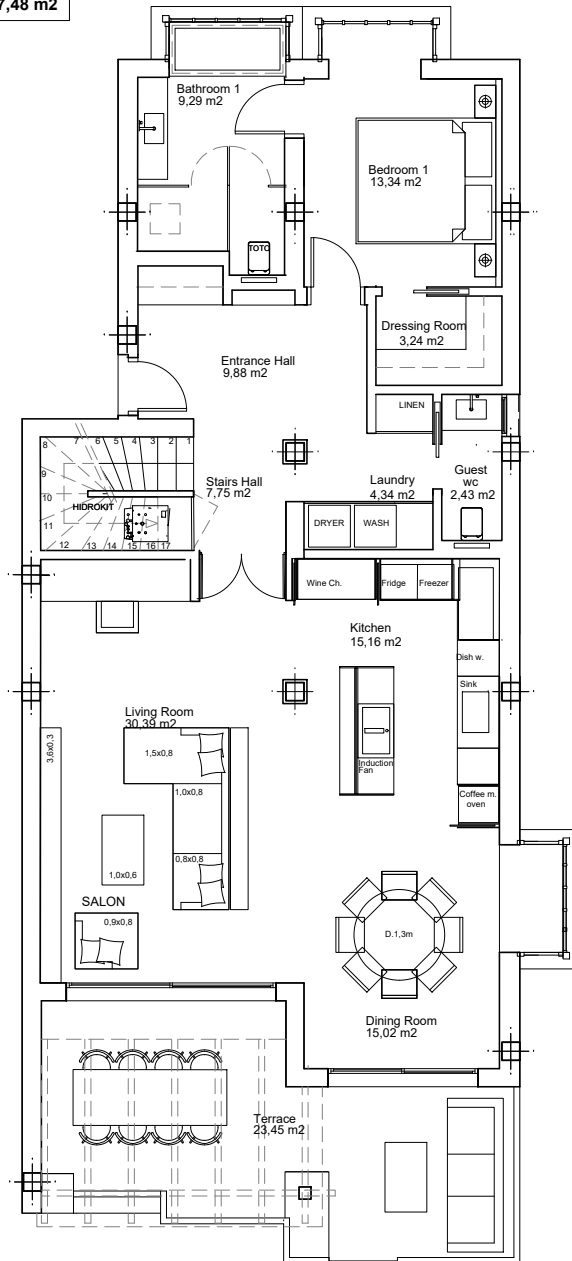


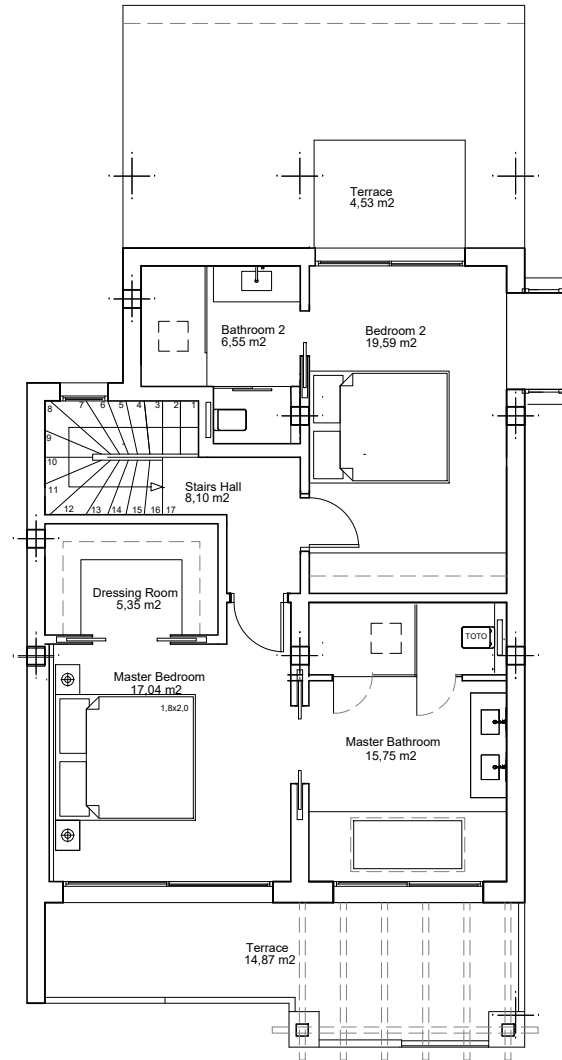
**LOW FLOOR**

**Built Surface** 131,50 m<sup>2</sup>  
**Terraces** 27,48 m<sup>2</sup>



**UPPER FLOOR**

**Built Surface** 87,59 m<sup>2</sup>  
**Terraces** 20,84 m<sup>2</sup>



**Total Surface**  
**Low floor & Upper Floor**

**Built Surface** 219,10 m<sup>2</sup>  
**Terraces** 48,32 m<sup>2</sup>

