



# ARUNA

CABOPINO GOLF

*Reserva dunar de Artola-Cabopino*







← to Puerto Banús  
30min

to Málaga →  
30min

Puente Romano

Marbella Beach Club

Puerto Deportivo Marbella

Puerto Pesquero Marbella

Playa Padre

Rio Real Golf

Wellness & Clinic Resort

Trocadero Arena

Hospital Costa del Sol

Los Monteros Gran Lujo

Santa Clara Golf

La Cabane by Dolce Gabanna

Don Carlos Hotel

ARUNA  
CABOPINO GOLF

Puerto deportivo Cabopino

Cabopino Golf

Reserva Dunar de Artola-Cabopino

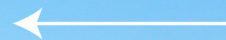
Nikki Beach

Nosso

La Plage Casanis

Estrella del Mar Beach Club

To Málaga



Cabopino Golf

Cabopino Port

Artola-Cabopino  
Dunes Reservoir

Don Carlos Hotel

To Marbella



**ARUNA**  
CABOPINO GOLF





Torre Ladrones

**ARUNA, new destination in East Marbella**

Marbella East is considered the best area to invest in due to the new projects coming up, hotels like W or Marriott, other emblematic hotels under renovation, which will become 5 Star hotels like Los Monteros Gran Lujo, Don Carlos or the former Medical Spa Incosol hotel which will become a Wellness & Clinic Resort, as well as new residential projects like Four Seasons, Arroyo Siete Revueltas and El Realejo which add up to more than one million square metres where a hotel, residential and commercial part will be developed.

**ARUNA, located in Cabopino Golf**

An area known for its spectacular beaches, considered the most beautiful natural beaches in Marbella, and for its dune reserve of high ecological value. This location, one of the most sought-after on the Costa del Sol, offers residents a variety of entertainment options and services nearby.





### **ARUNA, surrounded by a golf environment**

An area surrounded by nature and just a few minutes from the best golf courses. ARUNA is located within Cabopino Golf just a few meters walking from the clubhouse, and 5 minutes drive from Marbella Golf, Santa Clara Golf or Rio Real Golf.







### **Exclusive boutique complex**

Comprised of 12 state-of-the-art 3 and 4 bedroom flats and penthouses, almost all with en-suite bathrooms, carefully distributed in two blocks to optimise uninterrupted sea and mountain views.

The penthouses and ground floor apartments, in particular, have private swimming pools, offering residents an exclusive space to relax and enjoy the Mediterranean climate in the privacy of their own home.

The gated community has a perimeter fence, green areas, communal swimming pool, gymnasium and co-working area.

**Developer:**

With over 50 years' experience in the real estate sector, this developer has proven its strength and track record in the development, construction and sale of projects in the most exclusive areas of the Costa del Sol, as well as in Madrid and northern Spain. Notable developments include Las Cañas Beach Phase I and II, Costa Nagüeles I and II, Los Pinos, and the emblematic Hotel Amaré (formerly Hotel El Fuerte) in Marbella, as well as the Hotel Ilunion in Fuengirola.

Its portfolio includes current projects in key areas such as El Realejo in Los Monteros, Parque Central in Estepona, and other locations in Marbella, Torremolinos and Mijas, consolidating its presence in the real estate market thanks to efficient management and a solid commitment to the construction of unique, avant-garde and exclusive spaces.

**Architecture studio:**

MAAR Estudio de Arquitectura SLP is a studio with more than 20 years of experience in the development of architectural projects, urban planning and urbanisation, operating from its offices in Madrid and San Sebastián. With an extensive portfolio of projects nationwide, it has worked in cities such as Madrid, Malaga, San Sebastian, Vitoria, Logroño and Tarragona, ranging from public and private housing to hotels, offices and administrative buildings, and has won awards in various competitions, enabling it to participate in public cultural, educational and sporting initiatives.

Among his most outstanding projects are the Faculty of Education at the University of Zaragoza, the Zabalgana Cultural and Sports Centre in Vitoria, and various residential and hotel projects in Spain and Portugal.









Cabopino Marina



### **Prestigious lifestyle**

The proximity to the Cabopino Marina offers the opportunity to practice nautical activities or enjoy yacht rides. Just a few metres away, nature lovers can explore the impressive Artola Dunes. Nearby beaches such as Artola-Cabopino and Calahonda, considered to be the best natural beaches on the Costa del Sol, are perfect for enjoying the sun and sea during the hot summer months.

For families, the location is also ideal, with access to prestigious international schools such as The English International College and the German School, ensuring a high quality education in a multicultural environment.

### **Trending lifestyle**

Restaurants or beach clubs such as La Cabane by Dolce Gabanna, Trocadero Arena, Nikki Beach, Nosso, La Plage Casanis, Estrella del Mar Beach Club, Playa Padre, among others, are listed as some of the best places to disconnect and enjoy a magical moment in front of the sea.



*ARUNA, for nature lovers*





### **Experience unforgettable moments**

ARUNA's commitment to the highest standards is reflected in all areas, but especially in its impressive communal areas. Here, residents can enjoy an indoor gym and a modern coworking space. Outside, a picturesque, carefully landscaped garden is home to a magnificent communal swimming pool that invites you to share unforgettable moments outdoors with family and friends.







Arundo, contributing to a lower environmental impact



### **The homes at ARUNA**

Meticulously designed to offer an unparalleled experience. Each apartment has underfloor heating throughout, ensuring a comfortable temperature in all rooms.

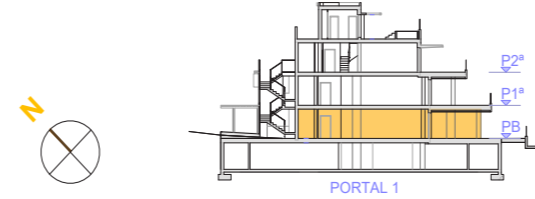
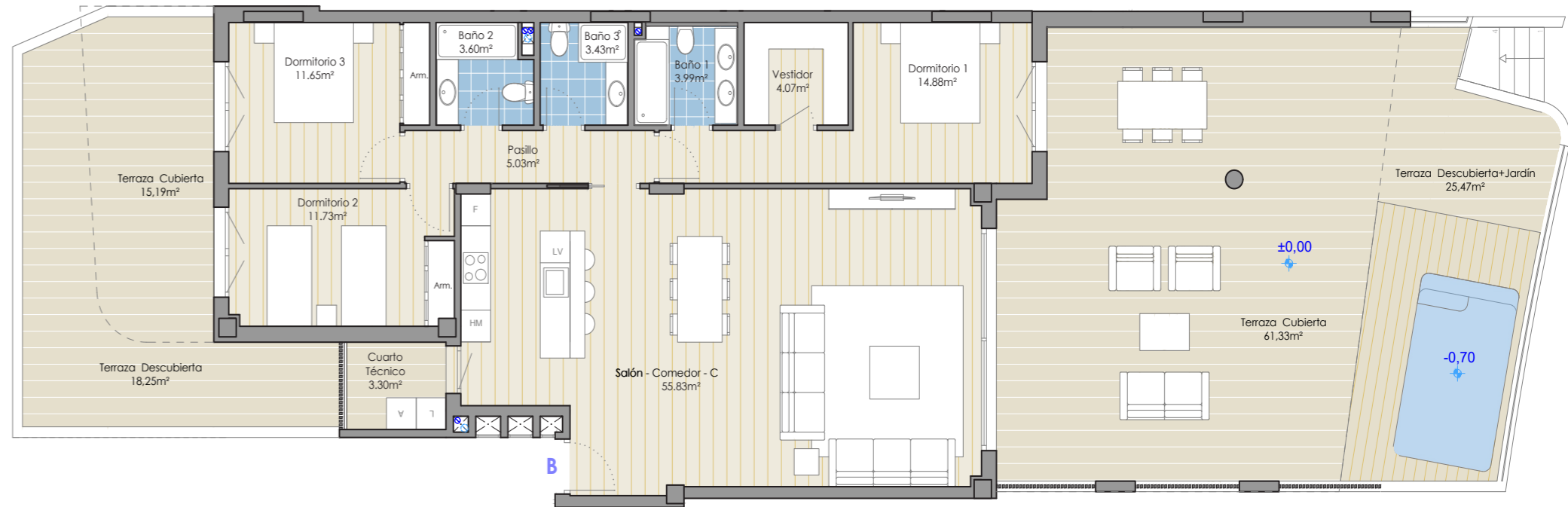
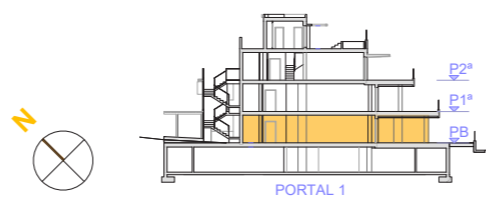
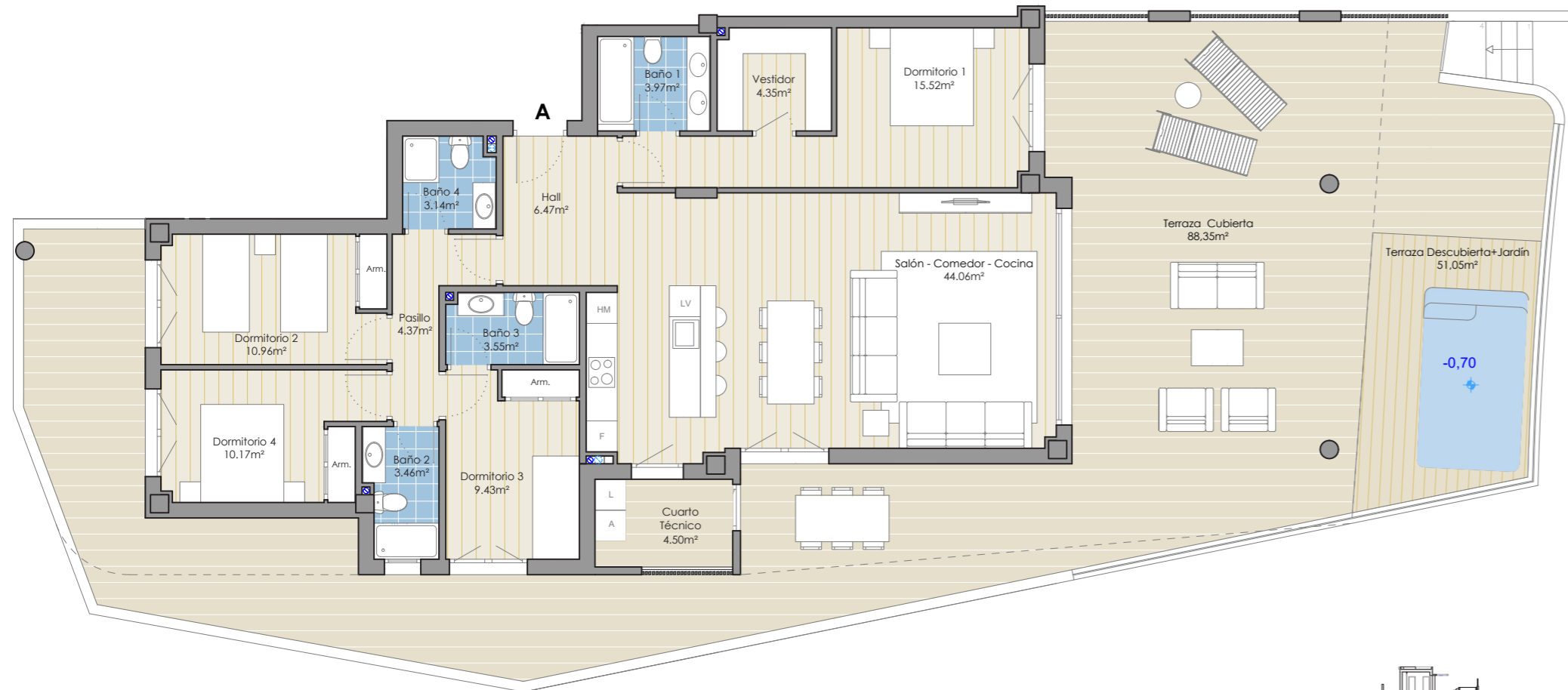




### **Sustainable homes with advanced technology and comfort**

These homes ensure low energy consumption and reduced environmental impact, thanks also to the use of aerothermal energy, an advanced technology that optimises the use of renewable energy. In addition, all homes are equipped with home automation systems that allow various functions of the home to be controlled remotely and automated, thus providing greater comfort to residents.





# ARUNA

CABOPINO GOLF

## PORTAL 01

Apartamento PB - A

CUADRO DE SUPERFICIES / AREAS

	SUP. ÚTIL USABLE AREAS	SUP. CONSTRUIDA BUILT AREA
Vivienda / Apartment	119,45 m2	140,63 m2
Terraza cubierta / Covered terrace	92,85 m2	96,33 m2
Terraza descubierta / Terrace uncovered	51,05 m2	58,88 m2
<b>Total</b>	<b>263,35 m2</b>	<b>295,84 m2</b>

Superficie Construida Total (interior + exterior + zccc)	315,90 m2
Sup. útil según Decreto 218/2005 Decree 218/2005	131,4 m2
Sup. Construida según Decreto 218/2005 Decree 218/2005	172,64 m2



# ARUNA

CABOPINO GOLF

## PORTAL 01

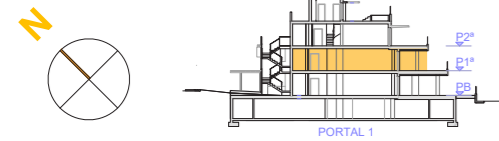
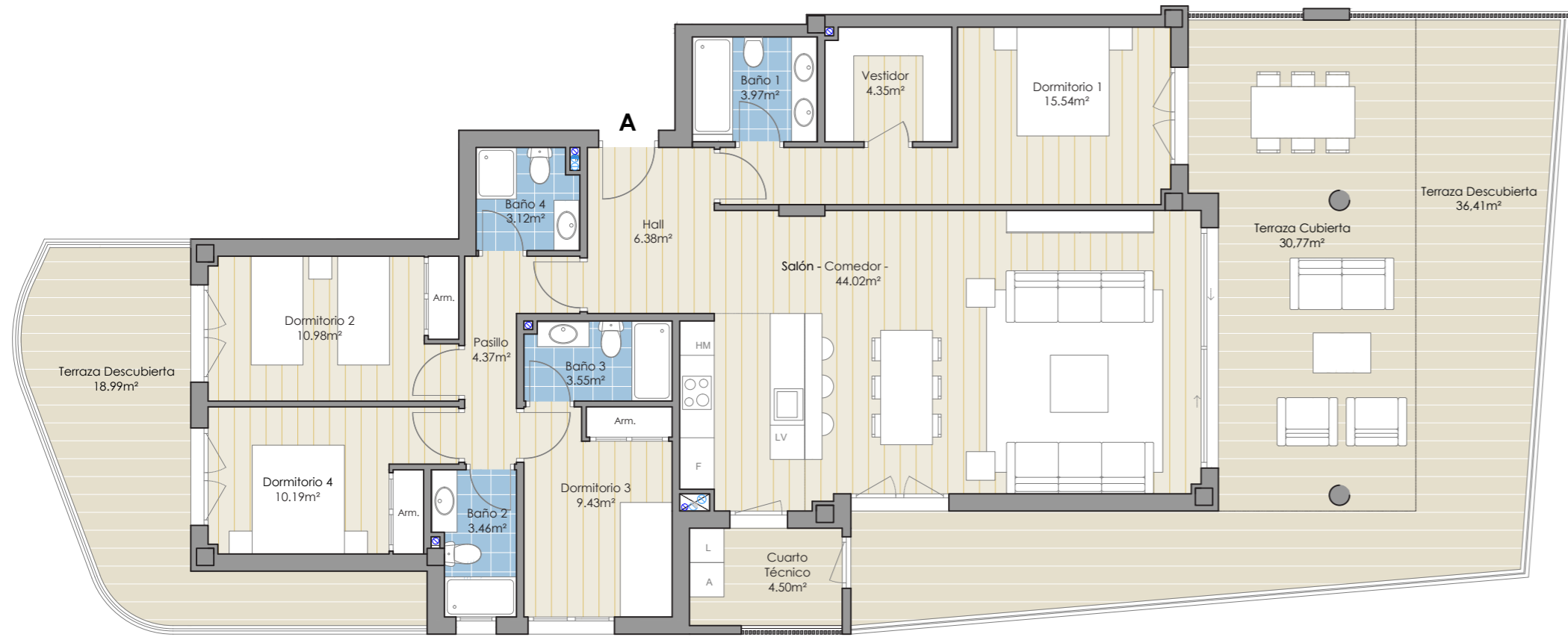
Apartamento PB - B

CUADRO DE SUPERFICIES / AREAS

	SUP. ÚTIL USABLE AREAS	SUP. CONSTRUIDA BUILT AREA
Vivienda / Apartment	114,21 m2	129,7 m2
Terraza cubierta / Covered terrace	79,82 m2	82,73 m2
Terraza descubierta / Terrace uncovered	43,72 m2	49,1 m2
<b>Total</b>	<b>237,75 m2</b>	<b>261,53 m2</b>

Superficie Construida Total (interior + exterior + zccc)	280,03 m2
Sup. útil según Decreto 218/2005 Decree 218/2005	125,63 m2
Sup. Construida según Decreto 218/2005 Decree 218/2005	159,62 m2





# ARUNA

CABOPINO GOLF

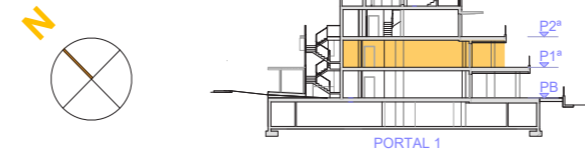
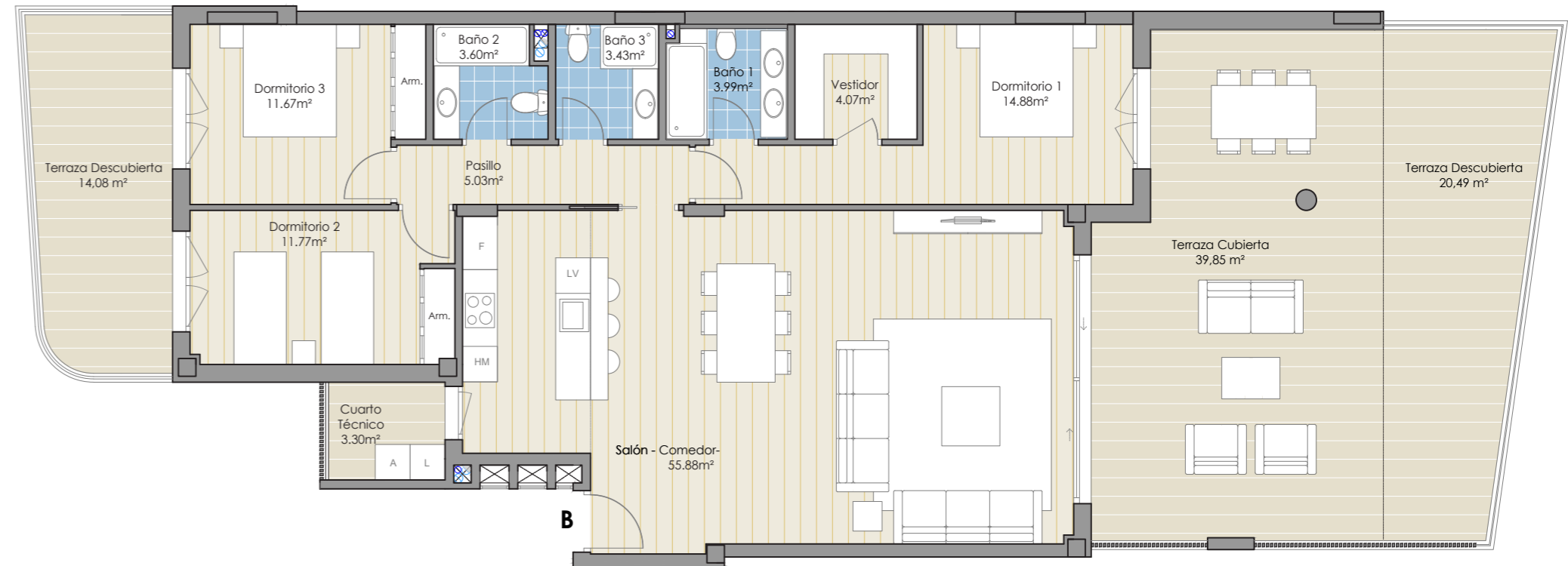
## PORTAL 01

Apartamento P1 - A

CUADRO DE SUPERFICIES / AREAS

	SUP. ÚTIL USABLE AREAS	SUP. CONSTRUIDA BUILT AREA
Vivienda / Apartment	119,36 m <sup>2</sup>	140,63 m <sup>2</sup>
Terraza cubierta / Covered terrace	35,27 m <sup>2</sup>	36,43 m <sup>2</sup>
Terraza descubierta / Terrace uncovered	55,40 m <sup>2</sup>	61,02 m <sup>2</sup>
<b>Total</b>	<b>210,03 m<sup>2</sup></b>	<b>238,08 m<sup>2</sup></b>

Superficie Construida Total (interior + exterior + zccc)	258,14 m <sup>2</sup>
Sup. útil según Decreto 218/2005 Decreto 218/2005	131,3 m <sup>2</sup>
Sup. Construida según Decreto 218/2005 Decreto 218/2005	172,63 m <sup>2</sup>



# ARUNA

CABOPINO GOLF

## PORTAL 01

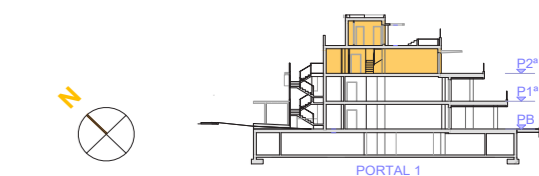
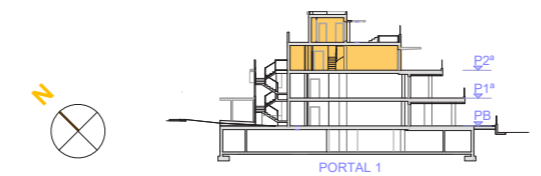
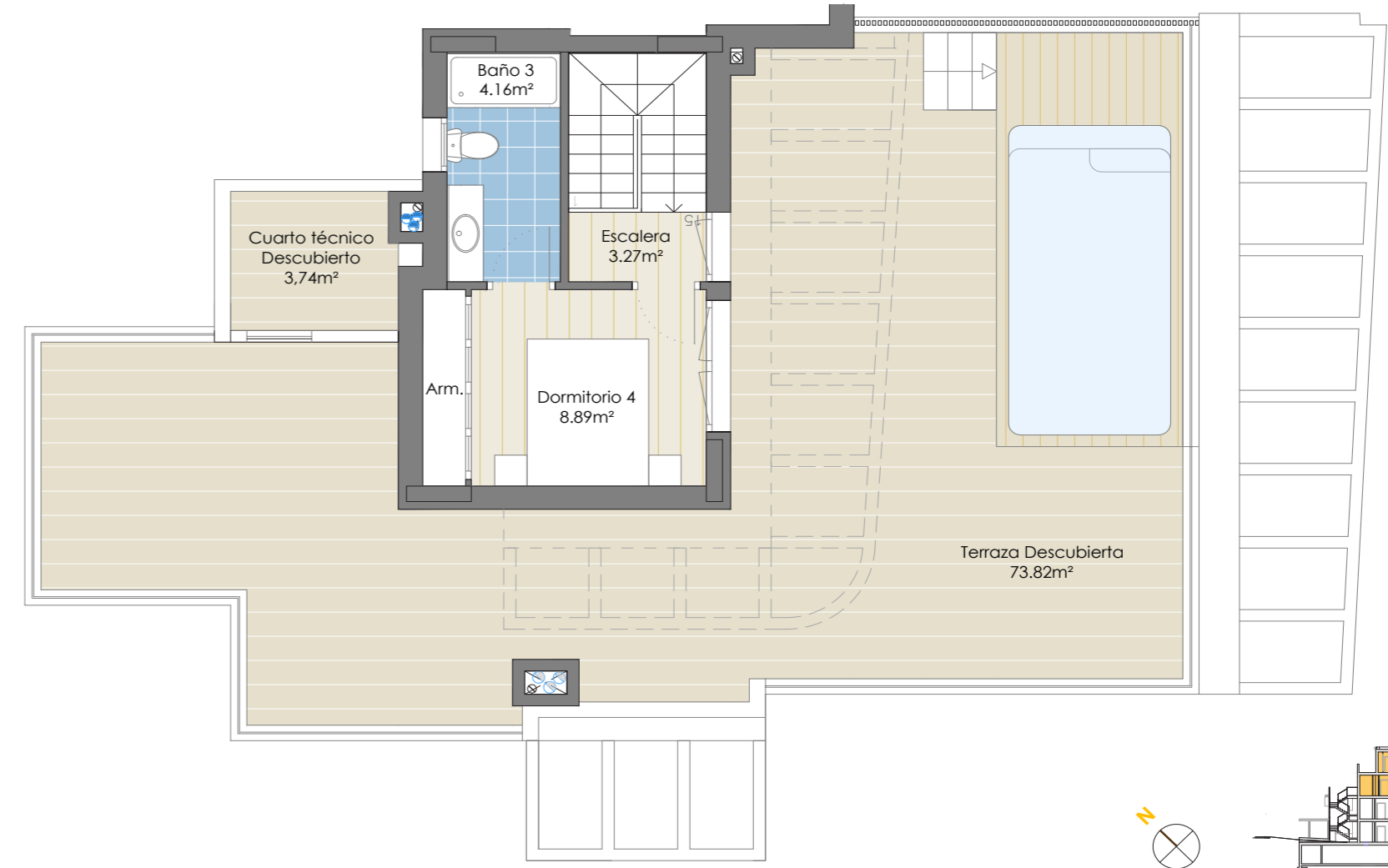
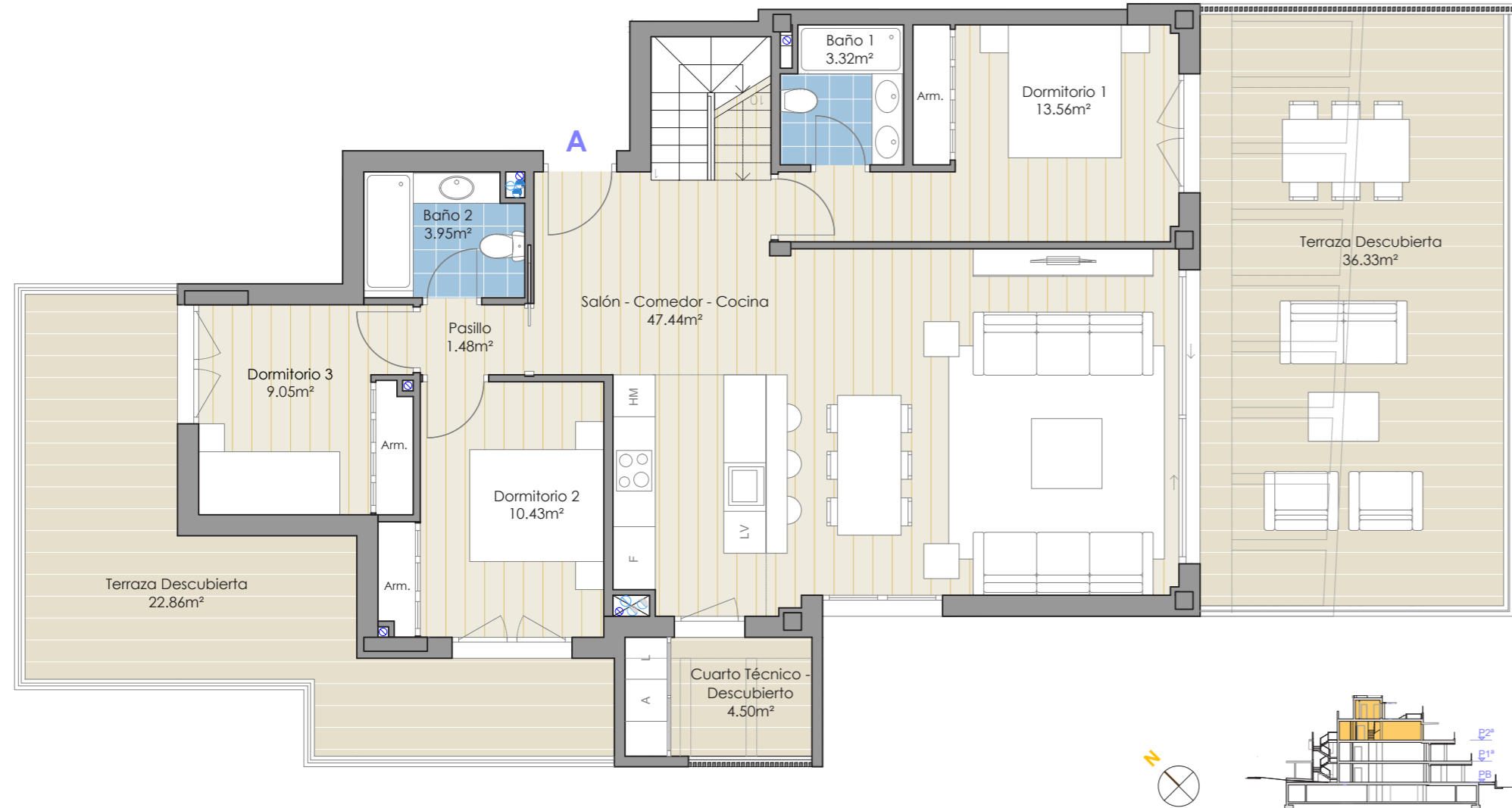
Apartamento P1 - B

CUADRO DE SUPERFICIES / AREAS

	SUP. ÚTIL USABLE AREAS	SUP. CONSTRUIDA BUILT AREA
Vivienda / Apartment	114,30 m <sup>2</sup>	129,70 m <sup>2</sup>
Terraza cubierta / Covered terrace	43,15 m <sup>2</sup>	44,83 m <sup>2</sup>
Terraza descubierta / Terrace uncovered	34,57 m <sup>2</sup>	38,1 m <sup>2</sup>
<b>Total</b>	<b>192,02 m<sup>2</sup></b>	<b>212,63 m<sup>2</sup></b>

Superficie Construida Total (interior + exterior + zccc)	231,13 m <sup>2</sup>
Sup. útil según Decreto 218/2005 Decreto 218/2005	125,73 m <sup>2</sup>
Sup. Construida según Decreto 218/2005 Decreto 218/2005	159,63 m <sup>2</sup>





# ARUNA

CABOPINO GOLF

## PORTAL 01

Apartamento P2 - A

CUADRO DE SUPERFICIES / AREAS

	SUP. ÚTIL USABLE AREAS	SUP. CONSTRUIDA BUILT AREA
Vivienda / Apartment	105,55 m <sup>2</sup>	131,41 m <sup>2</sup>
Terraza cubierta / Covered terrace	0,00 m <sup>2</sup>	0,00 m <sup>2</sup>
Terraza descubierta / Terrace uncovered	141,25 m <sup>2</sup>	154,66 m <sup>2</sup>
<b>Total</b>	<b>246,80 m<sup>2</sup></b>	<b>286,07 m<sup>2</sup></b>

Superficie Construida Total  
(interior + exterior + zccc) 304,82 m<sup>2</sup>

Sup. útil según Decreto 218/2005  
Decreto 218/2005 116,11 m<sup>2</sup>

Sup. Construida según Decreto 218/2005  
Decreto 218/2005 160,71 m<sup>2</sup>



# ARUNA

CABOPINO GOLF

## PORTAL 01

Apartamento P2 - A

CUADRO DE SUPERFICIES / AREAS

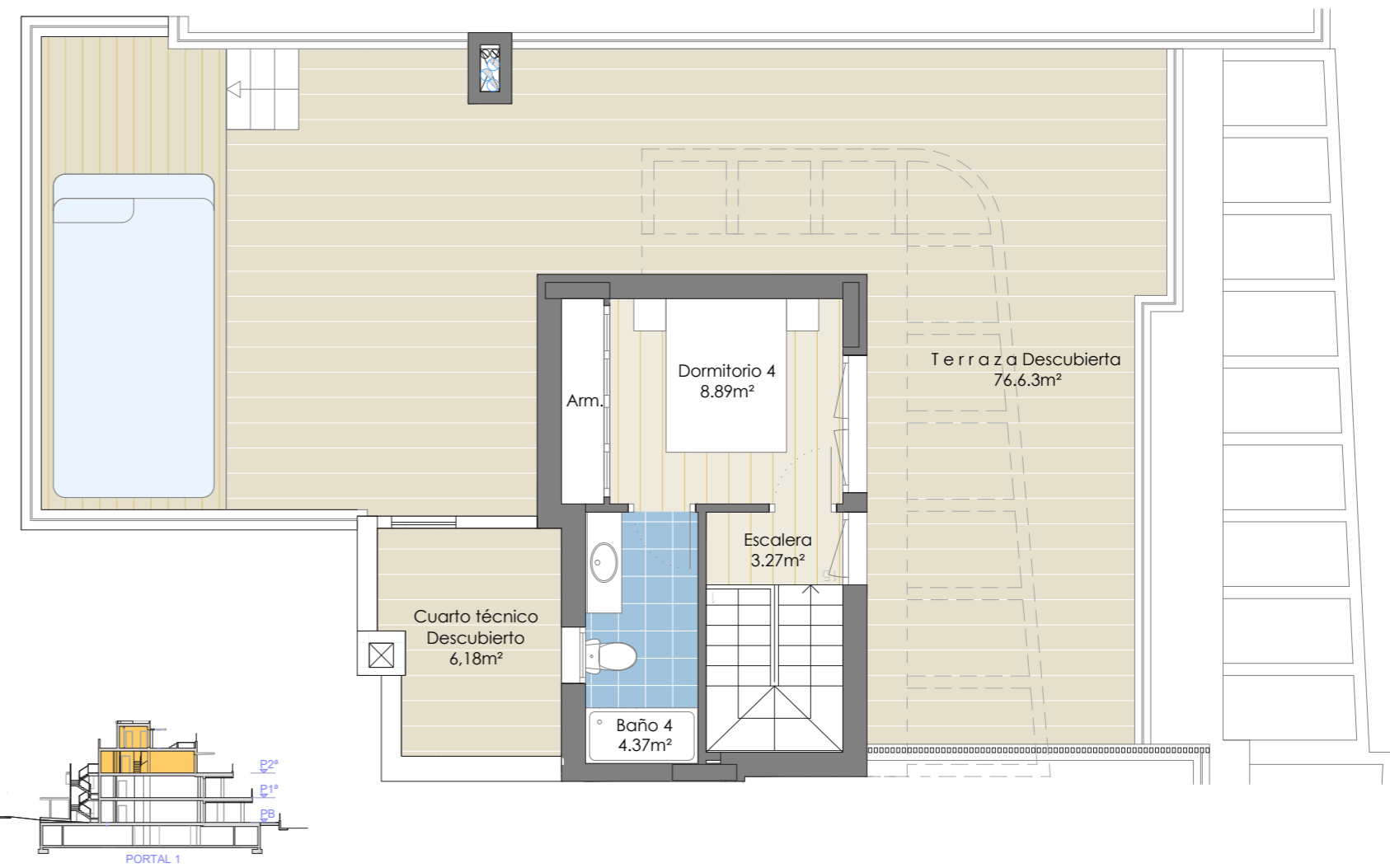
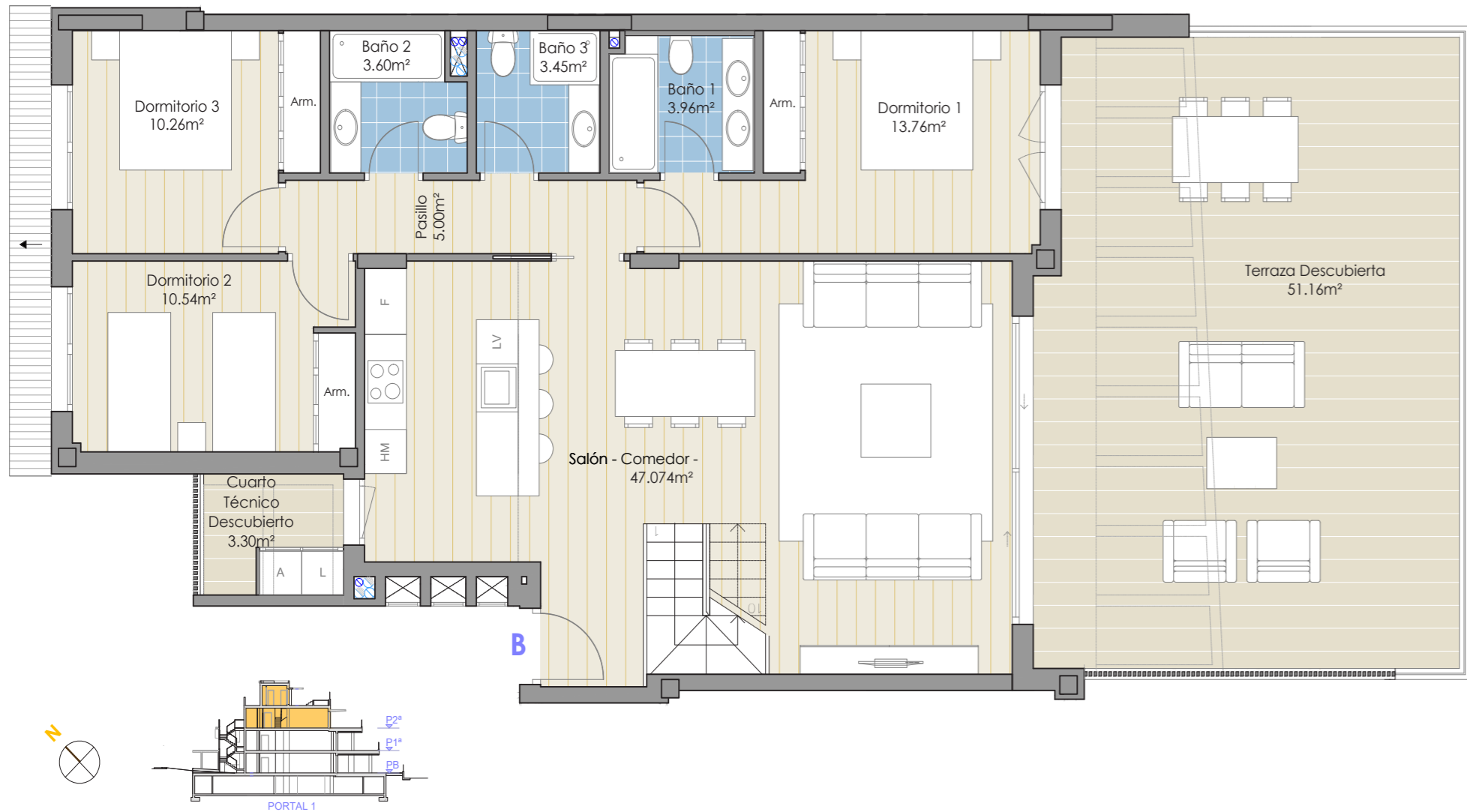
	SUP. ÚTIL USABLE AREAS	SUP. CONSTRUIDA BUILT AREA
Vivienda / Apartment	105,55 m <sup>2</sup>	131,41 m <sup>2</sup>
Terraza cubierta / Covered terrace	0,00 m <sup>2</sup>	0,00 m <sup>2</sup>
Terraza descubierta / Terrace uncovered	141,25 m <sup>2</sup>	154,66 m <sup>2</sup>
<b>Total</b>	<b>246,80 m<sup>2</sup></b>	<b>286,07 m<sup>2</sup></b>

Superficie Construida Total  
(interior + exterior + zccc) 304,82 m<sup>2</sup>

Sup. útil según Decreto 218/2005  
Decreto 218/2005 116,11 m<sup>2</sup>

Sup. Construida según Decreto 218/2005  
Decreto 218/2005 160,71 m<sup>2</sup>





# ARUNA

CABOPINO GOLF

## PORTAL 01

Apartamento P2 - B

CUADRO DE SUPERFICIES / AREAS

	SUP. ÚTIL USABLE AREAS	SUP. CONSTRUIDA BUILT AREA
Vivienda / Apartment	114,17 m <sup>2</sup>	137,34 m <sup>2</sup>
Terraza cubierta / Covered terrace	0,00 m <sup>2</sup>	0,00 m <sup>2</sup>
Terraza descubierta / Terrace uncovered	137,27 m <sup>2</sup>	147,58 m <sup>2</sup>
<b>Total</b>	<b>251,44 m<sup>2</sup></b>	<b>284,92 m<sup>2</sup></b>

Superficie Construida Total  
(interior + exterior + zcc)

304,51 m<sup>2</sup>

Sup. útil según Decreto 218/2005  
Decreto 218/2005

125,59 m<sup>2</sup>

Sup. Construida según Decreto 218/2005  
Decreto 218/2005

168,35 m<sup>2</sup>



# ARUNA

CABOPINO GOLF

## PORTAL 01

Apartamento P2 - B

CUADRO DE SUPERFICIES / AREAS

	SUP. ÚTIL USABLE AREAS	SUP. CONSTRUIDA BUILT AREA
Vivienda / Apartment	114,17 m <sup>2</sup>	137,34 m <sup>2</sup>
Terraza cubierta / Covered terrace	0,00 m <sup>2</sup>	0,00 m <sup>2</sup>
Terraza descubierta / Terrace uncovered	137,27 m <sup>2</sup>	147,58 m <sup>2</sup>
<b>Total</b>	<b>251,44 m<sup>2</sup></b>	<b>284,92 m<sup>2</sup></b>

Superficie Construida Total  
(interior + exterior + zcc)

304,51 m<sup>2</sup>

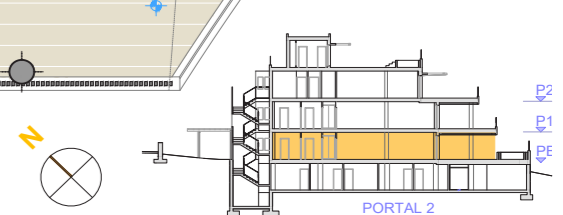
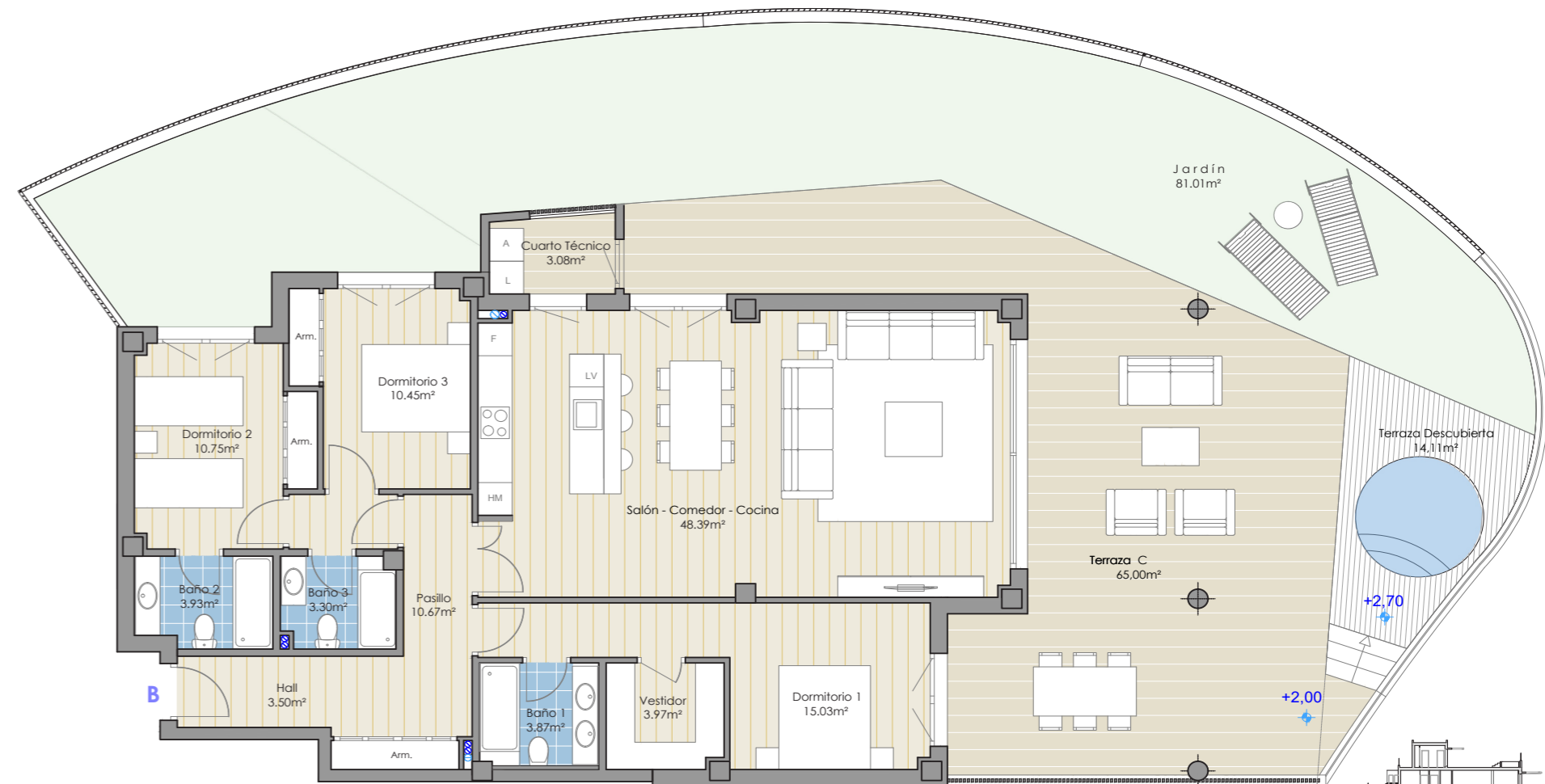
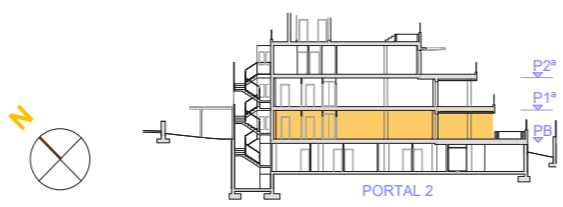
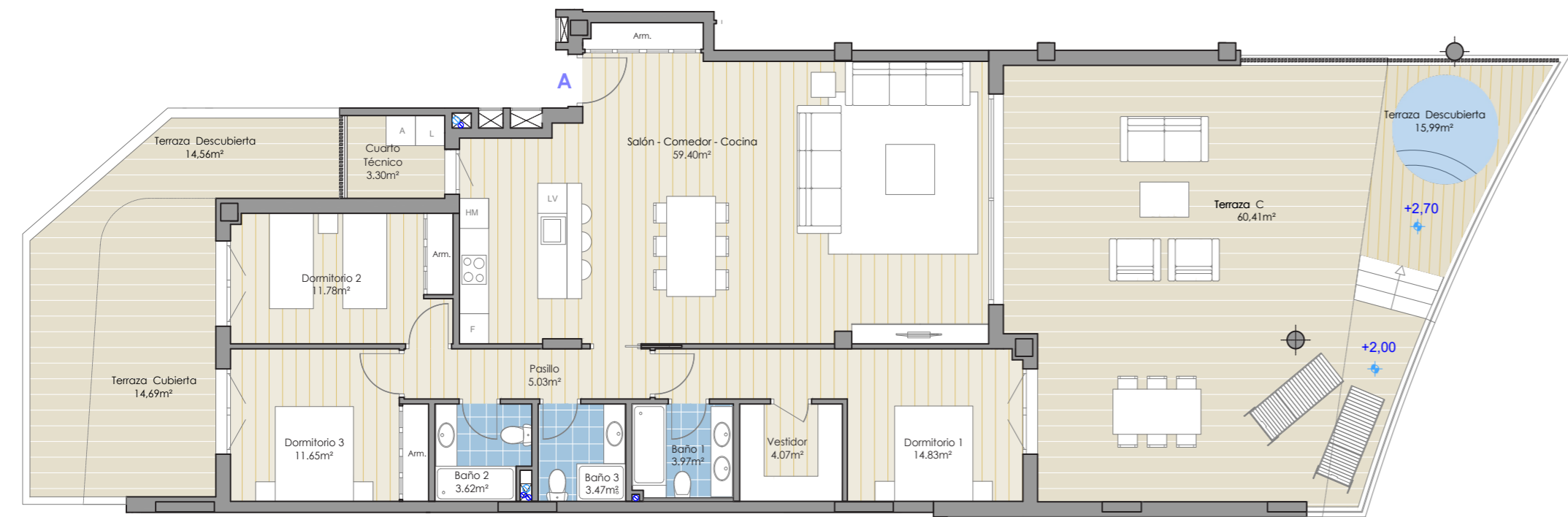
Sup. útil según Decreto 218/2005  
Decreto 218/2005

125,59 m<sup>2</sup>

Sup. Construida según Decreto 218/2005  
Decreto 218/2005

168,35 m<sup>2</sup>





# ARUNA

CABOPINO GOLF

## PORTAL 02

Apartamento PB - A

CUADRO DE SUPERFICIES / AREAS

	SUP. ÚTIL USABLE AREAS	SUP. CONSTRUIDA BUILT AREA
Vivienda / Apartment	117,82m <sup>2</sup>	133,04 m <sup>2</sup>
Terraza cubierta / Covered terrace	78,40 m <sup>2</sup>	80,28 m <sup>2</sup>
Terraza descubierta / Terrace uncovered	30,55 m <sup>2</sup>	35,31 m <sup>2</sup>
<b>Total</b>	<b>226,77 m<sup>2</sup></b>	<b>248,63 m<sup>2</sup></b>

Superficie Construida Total (interior + exterior + zzcc)	267,61 m <sup>2</sup>
Sup. útil según Decreto 218/2005 Decree 218/2005	129,6 m <sup>2</sup>
Sup. Construida según Decreto 218/2005 Decree 218/2005	163,80 m <sup>2</sup>



# ARUNA

CABOPINO GOLF

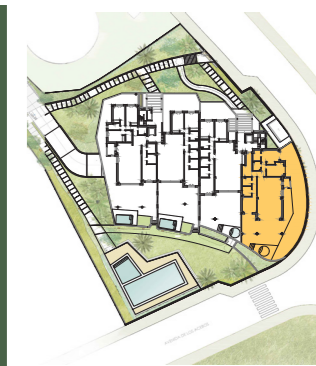
## PORTAL 02

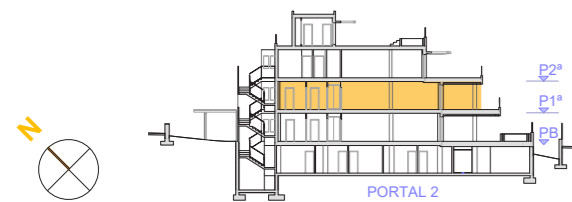
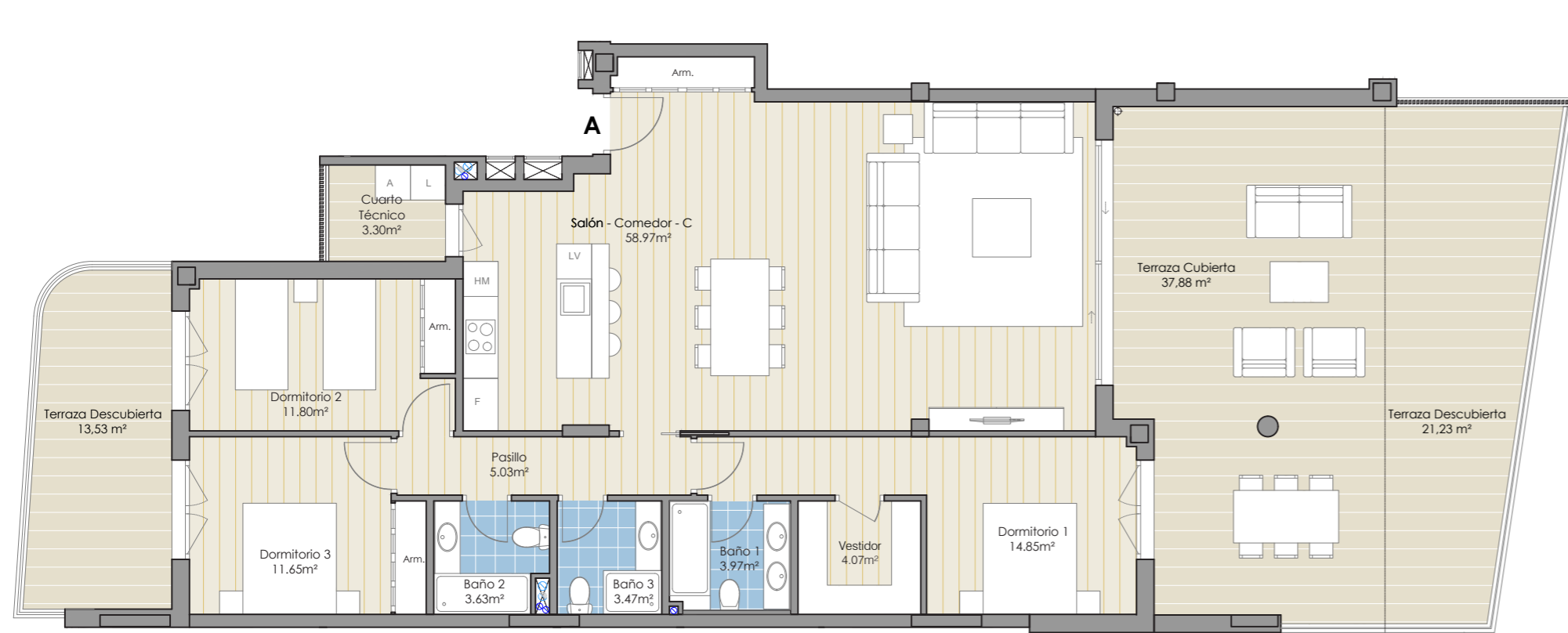
Apartamento PB - B

CUADRO DE SUPERFICIES / AREAS

	SUP. ÚTIL USABLE AREAS	SUP. CONSTRUIDA BUILT AREA
Vivienda / Apartment	113,86 m <sup>2</sup>	132,82 m <sup>2</sup>
Terraza cubierta / Covered terrace	68,08 m <sup>2</sup>	69,69 m <sup>2</sup>
Terraza descubierta / Terrace uncovered	95,12 m <sup>2</sup>	99,02 m <sup>2</sup>
<b>Total</b>	<b>277,06 m<sup>2</sup></b>	<b>301,53 m<sup>2</sup></b>

Superficie Construida Total (interior + exterior + zzcc)	320,48 m <sup>2</sup>
Sup. útil según Decreto 218/2005 Decree 218/2005	125,25 m <sup>2</sup>
SSup. Construida según Decreto 218/2005 Decree 218/2005	163,15 m <sup>2</sup>





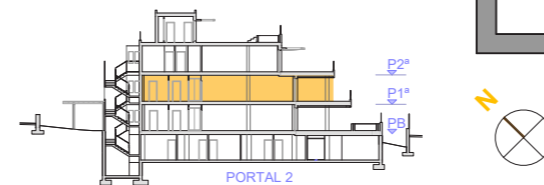
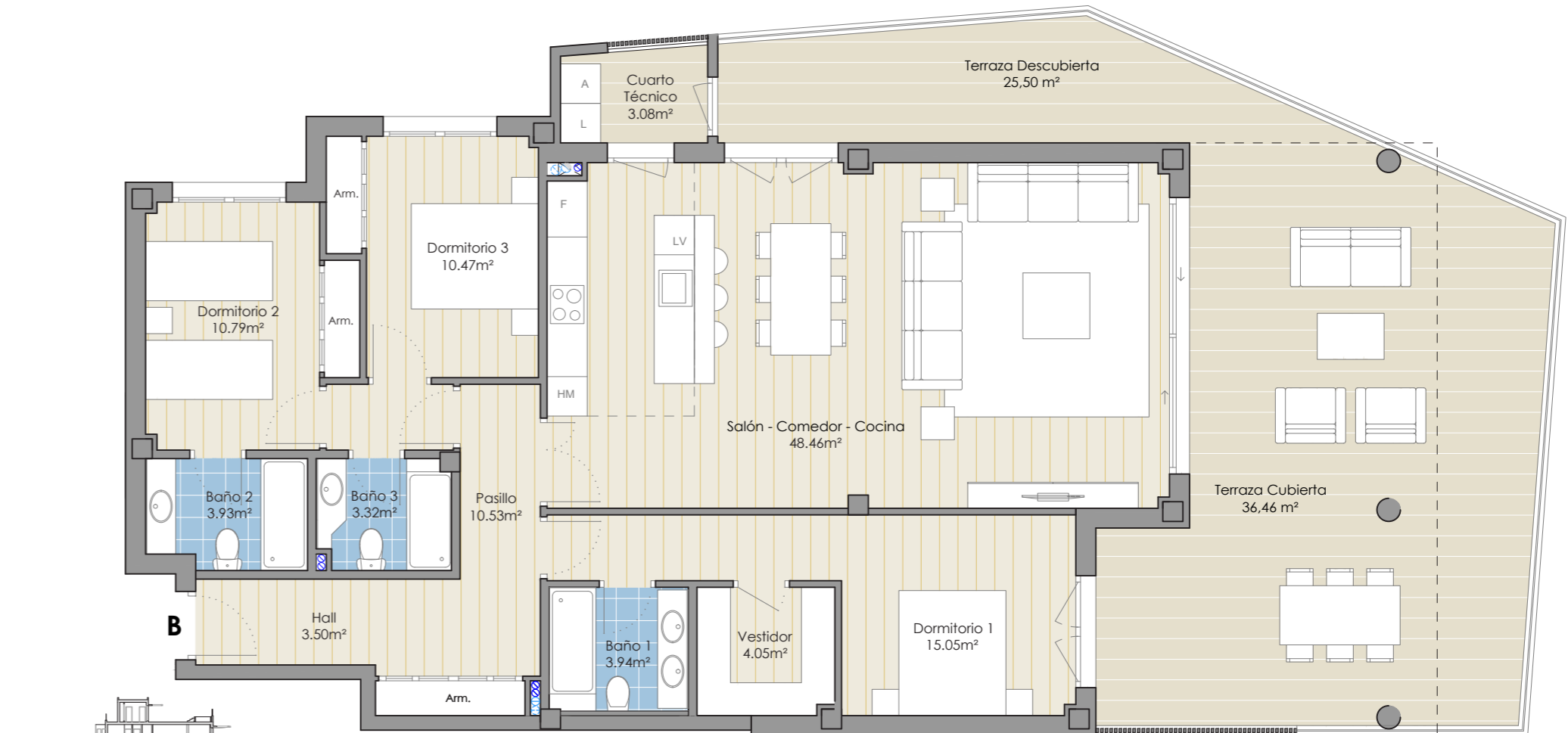
# ARUNA

CABOPINO GOLF

**PORTAL 02**  
Apartamento P1 - A  
CUADRO DE SUPERFICIES / AREAS

	SUP. ÚTIL USABLE AREAS	SUP. CONSTRUIDA BUILT AREA
Vivienda / Apartment	117,44 m2	133,04 m2
Terraza cubierta / Covered terrace	41,18 m2	43,12 m2
Terraza descubierta / Terrace uncovered	34,76 m2	37,94 m2
<b>Total</b>	<b>193,38 m2</b>	<b>214,1 m2</b>

Superficie Construida Total (interior + exterior + zzcc)	233,08 m2
Sup. útil según Decreto 218/2005 Decree 218/2005	129,18 m2
Sup. Construida según Decreto 218/2005 Decree 218/2005	163,76 m2



# ARUNA

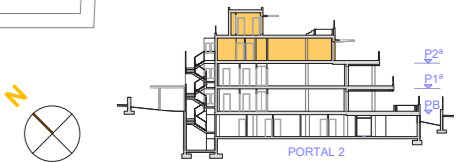
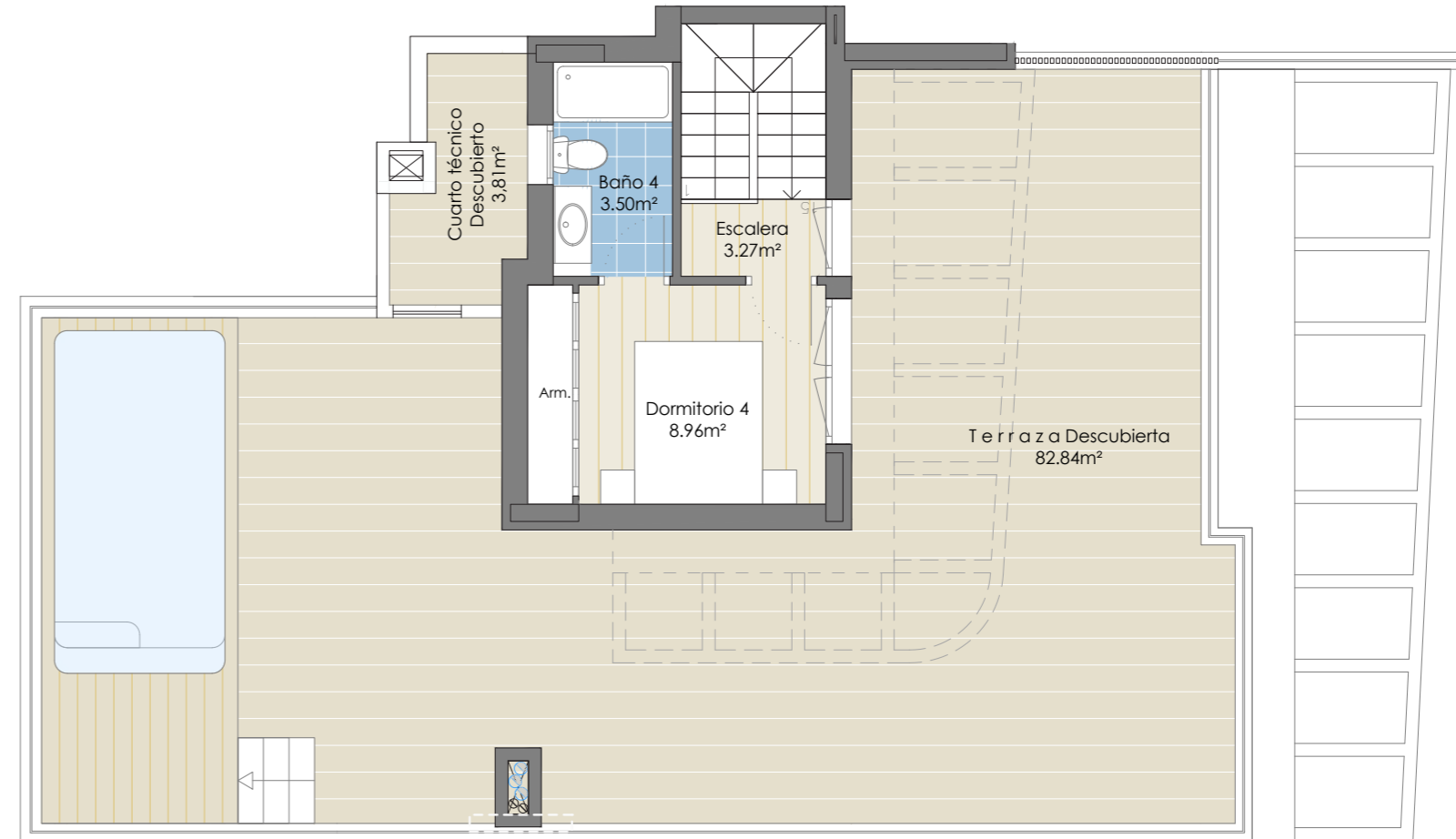
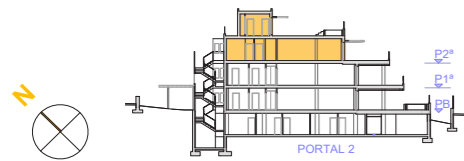
CABOPINO GOLF

**PORTAL 02**  
Apartamento P1 - B  
CUADRO DE SUPERFICIES / AREAS

	SUP. ÚTIL USABLE AREAS	SUP. CONSTRUIDA BUILT AREA
Vivienda / Apartment	114,04 m2	132,82 m2
Terraza cubierta / Covered terrace	39,54 m2	41,45 m2
Terraza descubierta / Terrace uncovered	25,50 m2	28,88 m2
<b>Total</b>	<b>179,08 m2</b>	<b>203,15 m2</b>

Superficie Construida Total (interior + exterior + zzcc)	222,10 m2
Sup. útil según Decreto 218/2005 Decree 218/2005	125,44 m2
Sup. Construida según Decreto 218/2005 Decree 218/2005	163,17 m2





# ARUNA

CABOPINO GOLF

## PORTAL 02

Apartamento P2 - A

CUADRO DE SUPERFICIES / AREAS

	SUP. ÚTIL USABLE AREAS	SUP. CONSTRUIDA BUILT AREA
Vivienda / Apartment	115,29 m2	138,92 m2
Terraza cubierta / Covered terrace	0,00 m2	0,00 m2
Terraza descubierta / Terrace uncovered	142,09 m2	154,33 m2
<b>Total</b>	<b>257,38 m2</b>	<b>293,25 m2</b>

Superficie Construida Total (interior + exterior + zccc)	313,07 m2
Sup. útil según Decreto 218/2005 Decreto 218/2005	126,82 m2
SSup. Construida según Decreto 218/2005 Decreto 218/2005	170,27 m2



# ARUNA

CABOPINO GOLF

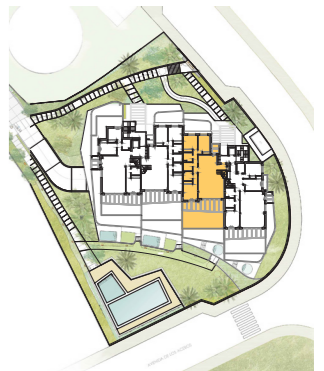
## PORTAL 02

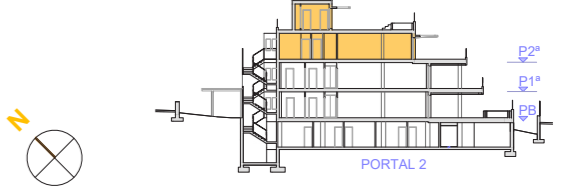
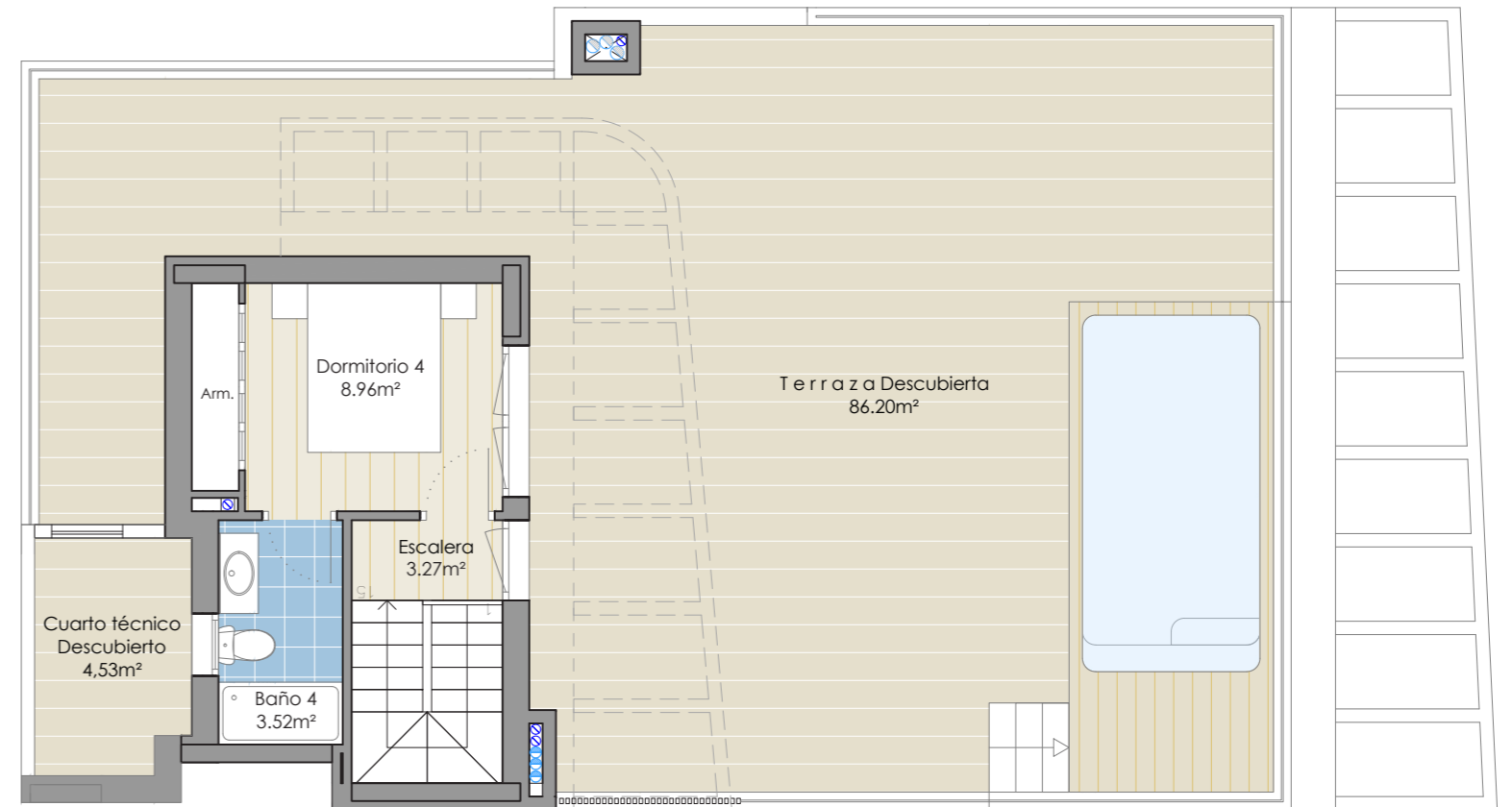
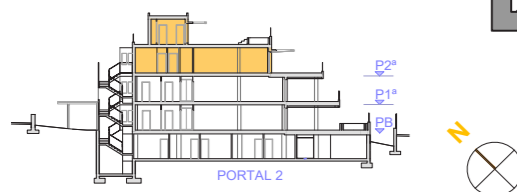
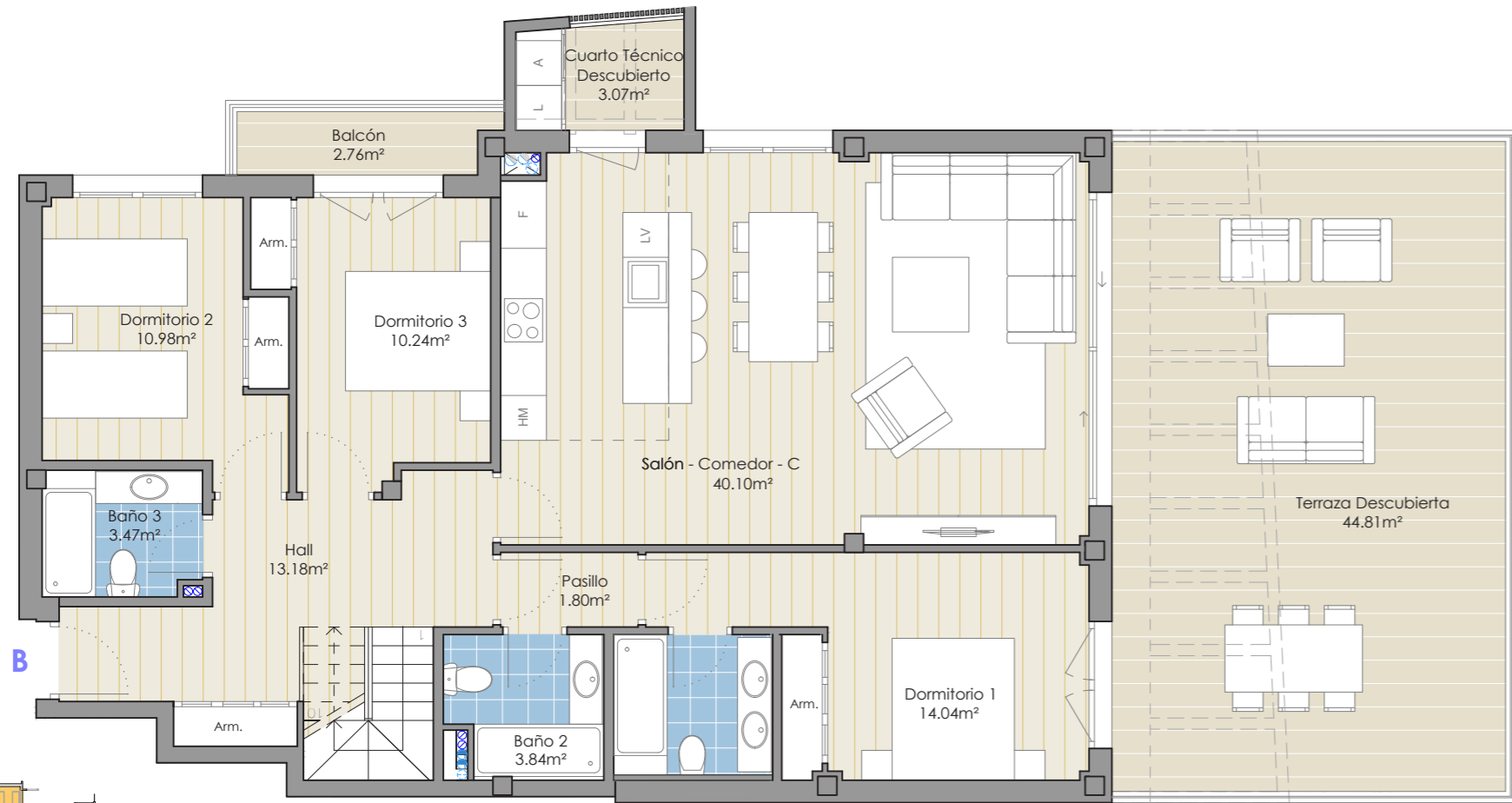
Apartamento P2 - A

CUADRO DE SUPERFICIES / AREAS

	SUP. ÚTIL USABLE AREAS	SUP. CONSTRUIDA BUILT AREA
Vivienda / Apartment	115,29 m2	138,92 m2
Terraza cubierta / Covered terrace	0,00 m2	0,00 m2
Terraza descubierta / Terrace uncovered	142,09 m2	154,33 m2
<b>Total</b>	<b>257,38 m2</b>	<b>293,25 m2</b>

Superficie Construida Total (interior + exterior + zccc)	313,07 m2
Sup. útil según Decreto 218/2005 Decreto 218/2005	126,82 m2
Sup. Construida según Decreto 218/2005 Decreto 218/2005	170,27 m2





# ARUNA

CABOPINO GOLF

**PORTAL 02**  
Apartamento P2 - B  
CUADRO DE SUPERFICIES / AREAS

	SUP. ÚTIL USABLE AREAS	SUP. CONSTRUIDA BUILT AREA
Vivienda / Apartment	117,44 m2	143,91 m2
Terraza cubierta / Covered terrace	0,00 m2	0,00 m2
Terraza descubierta / Terrace uncovered	141,37 m2	154,41 m2
<b>Total</b>	<b>258,81 m2</b>	<b>298,32 m2</b>

Superficie Construida Total  
(interior + exterior + zccc) 318,85 m2  
Sup. útil según Decreto 218/2005 Decree 218/2005 129,18 m2  
Sup. Construida según Decreto 218/2005 Decree 218/2005 176,18 m2



# ARUNA

CABOPINO GOLF

**PORTAL 02**  
Apartamento P2 - B  
CUADRO DE SUPERFICIES / AREAS

	SUP. ÚTIL USABLE AREAS	SUP. CONSTRUIDA BUILT AREA
Vivienda / Apartment	117,44 m2	143,91 m2
Terraza cubierta / Covered terrace	0,00 m2	0,00 m2
Terraza descubierta / Terrace uncovered	141,37 m2	154,41 m2
<b>Total</b>	<b>258,81 m2</b>	<b>298,32 m2</b>

Superficie Construida Total  
(interior + exterior + zccc) 318,85 m2  
Sup. útil según Decreto 218/2005 Decree 218/2005 129,18 m2  
Sup. Construida según Decreto 218/2005 Decree 218/2005 176,18 m2



# ARUNA

C A B O P I N O G O L F



+34 952 813 333  
info@nvoga.com