

# THE AVENUE

M A R B E L L A

---

## Villa 2

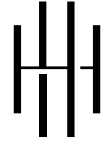
Tipology B1

Bedrooms  
5

Bathrooms  
5+2

Orientation  
E

€4.450.000



# THE AVENUE

M A R B E L L A

## VILLA 2

PLOT 979 m<sup>2</sup>

---

### BUILT AREA

---

Living Area 506,78 m<sup>2</sup>

---

Terrace Area 177,58 m<sup>2</sup>

---

**TOTAL BUILT AREA 684,35 m<sup>2</sup>**

ACCORDING TO DECRETO 218/2005

---

Useful Area 434,56 m<sup>2</sup>

---

Built Area 546,28 m<sup>2</sup>

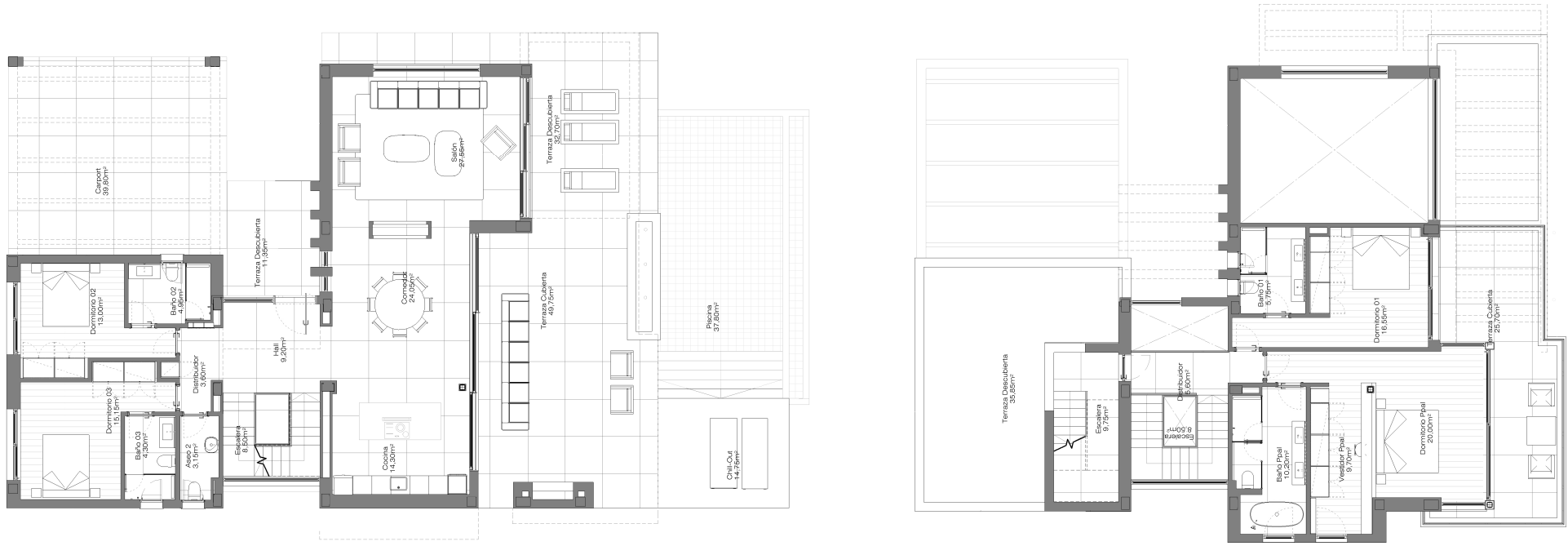


This plan may be modified depending on progress of the development. The furniture shown is purely for decorative purposes. The project manager reserves the right to make the necessary changes for any possible functional, aesthetic and legal reasons, without this negatively affecting the quality of the construction. Illustrative dimensions.



# THE AVENUE

MARBELLA



MAIN LEVEL

UPPER LEVEL



This plan may be modified depending on progress of the development. The furniture shown is purely for decorative purposes. The project manager reserves the right to make the necessary changes for any possible functional, aesthetic and legal reasons, without this negatively affecting the quality of the construction. Illustrative dimensions.

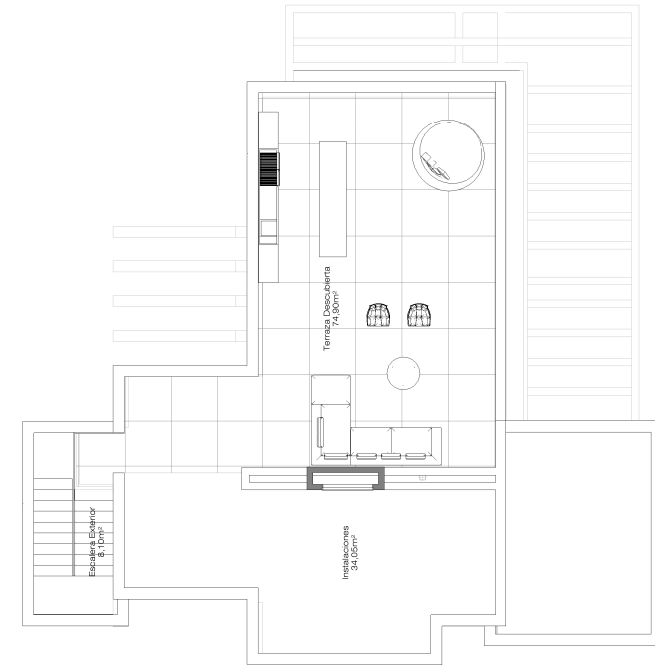


# THE AVENUE

M A R B E L L A



LOWER LEVEL



SOLARIUM



This plan may be modified depending on progress of the development. The furniture shown is purely for decorative purposes. The project manager reserves the right to make the necessary changes for any possible functional, aesthetic and legal reasons, without this negatively affecting the quality of the construction. Illustrative dimensions.