

PIEMONTE

MARBELLA

by **AMES**[®]
arquitectos

MARBELLA
PIEMONTE

BASEMENT

- INTERIOR **328.80 m²**

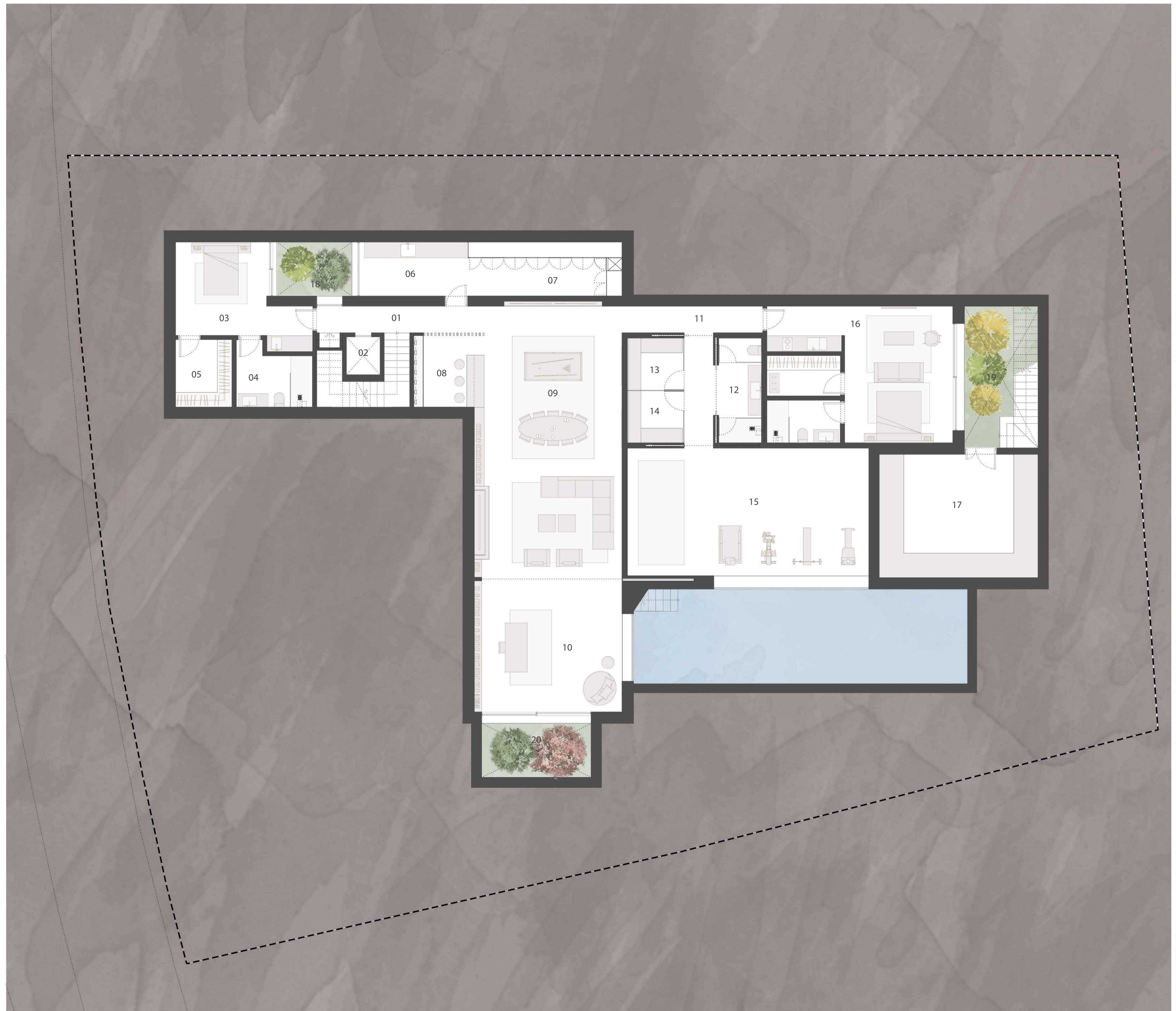
01	Hallway 01	14.88 m ²
02	Lift	2.14 m ²
03	Bedroom 01	17.52 m ²
04	Bath 01	7.18 m ²
05	Wardrobe 01	6.32 m ²
06	Laundry	9.68 m ²
07	Storage	13.75 m ²
08	Wine cellar	7.13 m ²
09	Play room	66.34 m ²
10	Office	32.32 m ²
11	Hallway 02	11.97 m ²
12	Changing room	6.17 m ²
13	Sauna	4.83 m ²
14	Hamman	4.83 m ²
15	Gym	50.81 m ²
16	Guest room	40.62 m ²
17	Machinery room	32.31 m ²

- EXTERIOR **35.64 m²**

18	Courtyard 01	7.22 m ²
19	Courtyard 02	17.25 m ²
20	Courtyard 03	11.17 m ²



AMES
 arquitectos

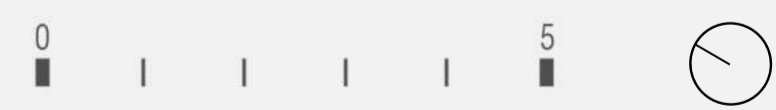


MARBELLA
PIEMONTE

GROUND FLOOR

- INTERIOR		181.34 m ²
21	Hall	13.12 m ²
22	Hallway 03	12.81 m ²
23	Lift	2.14 m ²
24	Toilet	3.96 m ²
25	Bedroom 02	17.77 m ²
26	Bath 02	4.18 m ²
27	Kitchen	37.17 m ²
28	Pantry	12.16 m ²
29	Dining room	24.41 m ²
30	Living room	29.60 m ²
31	Sala TV	21.08 m ²
32	Out WC.	2.94 m ²

- EXTERIOR		352.70 m ²
33	Entrance	83.96 m ²
34	Carport	51.75 m ²
35	Pergolated terrace 01	10.18 m ²
36	Pergolated terrace 02	24.66 m ²
37	Covered terrace 01	43.93 m ²
38	Pool terrace	31.78 m ²
39	Pool	52.17 m ²
40	Gazebo	54.27 m ²



AMES
 arquitectos

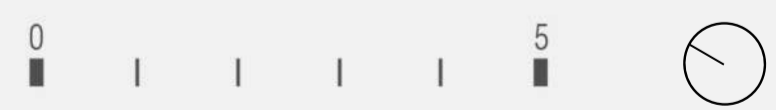


MARBELLA
PIEMONTE

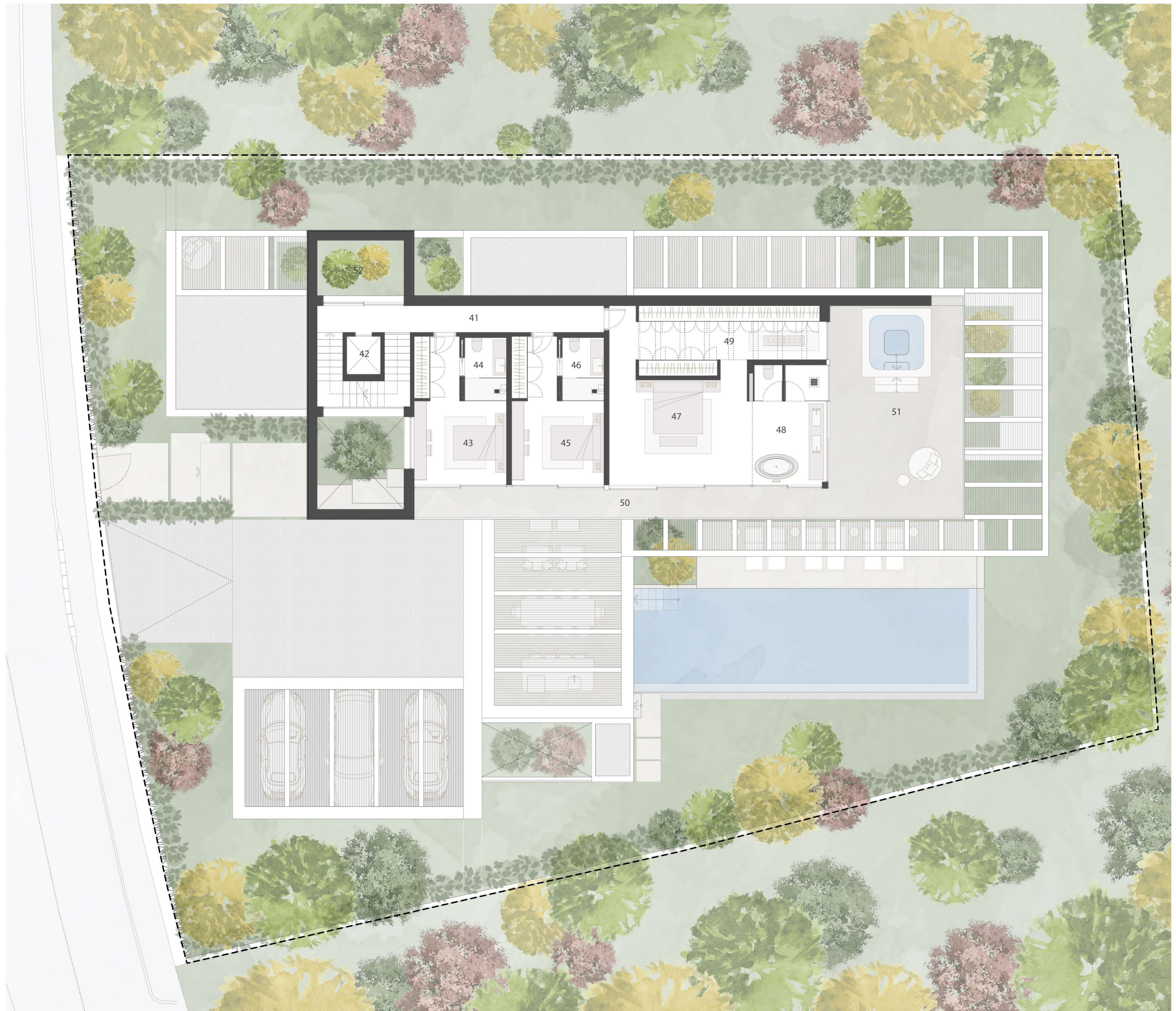
FIRST FLOOR

- INTERIOR		128.47 m ²
41	Hallway 04	20.76 m ²
42	Lift	2.14 m ²
43	Bedroom 03	17.53 m ²
44	Bath 03	4.33 m ²
45	Bedroom 04	17.53 m ²
46	Bath 04	4.33 m ²
47	Master bedroom	28.78 m ²
48	Master bathroom	14.28 m ²
49	Master wardrobe	18.79 m ²

- EXTERIOR		77.34 m ²
50	Covered terrace 02	28.10 m ²
51	Jacuzzi area	41.30 m ²
52	Garden	7.94 m ²



AMES
arquitectos



MARBELLA
PIEMONTE

ROOF FLOOR



AMES
arquitectos

