



VISTA LAGO
RESIDENCES

developed by
BRIGHT.

N°13

VILLA
MALAQUITA



Nº13 MALAQUITA

Each design-led home at Vista Lago will be quite unlike anything that has gone before. In a climate that lends itself to outdoor living, these villas will work as well outside as they do inside, if one can tell the difference. The outside/inside concept is found in each villa, with the lounge and terrace seamlessly merging into one huge living space.

In key parts of the villas, both at ground level and upstairs, the windows will disappear into the walls, ensuring perfectly clear views and bringing the outside in. A combination of custom-designed furniture and world-leading brands along with a stunning selection of artwork makes a Vista Lago home something to be truly proud of.

developed by
BRIGHT.





Nº13 MALAQUITA

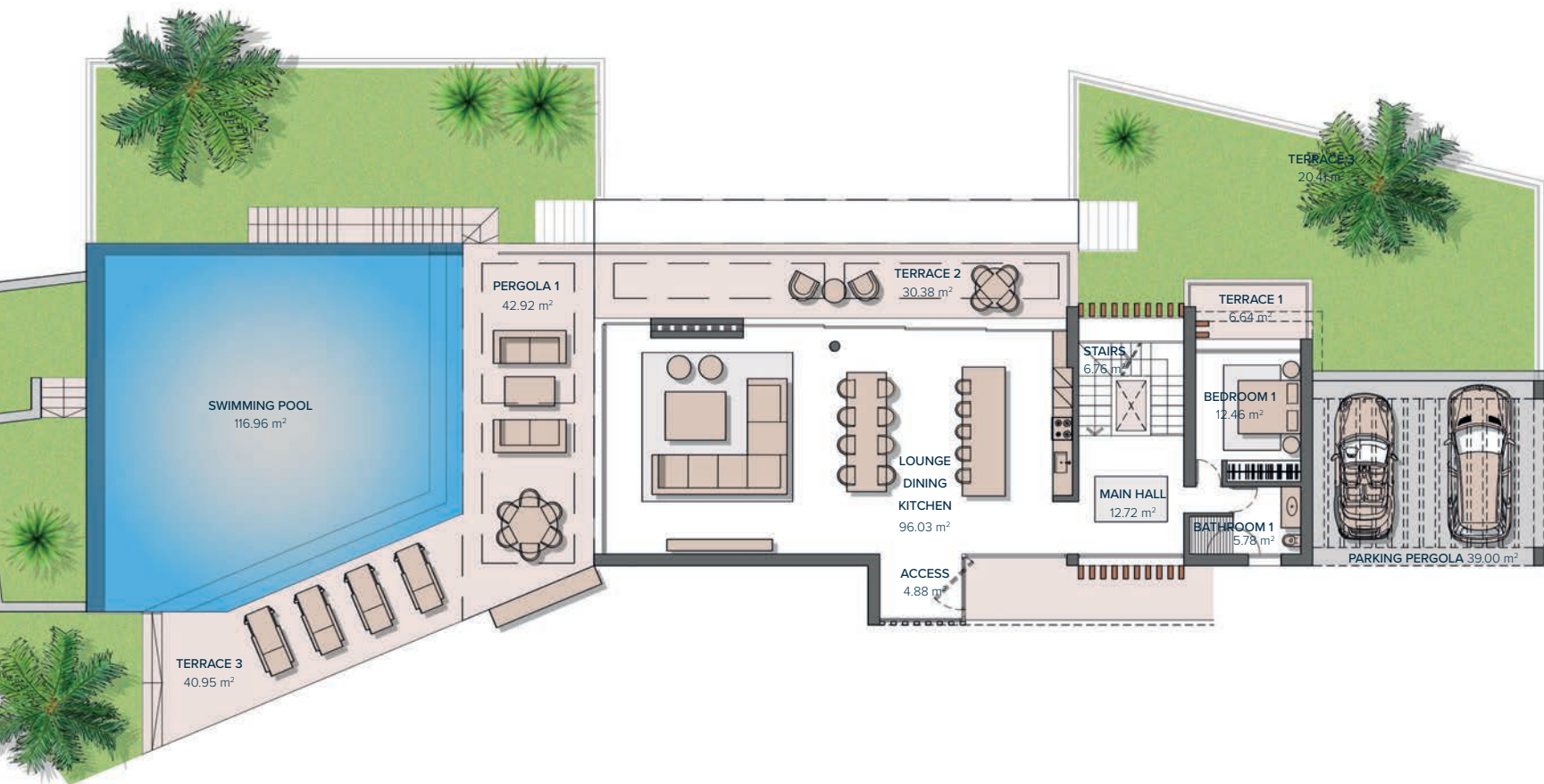
FIRST FLOOR	166,98 m ²
GROUND FLOOR	123,91 m ²
BASEMENT	192,22 m ²
TOTAL	483,11 m²

TERRACES	114,62 m ²
PERGOLAS	42,43 m ²
CARPORT	39,33 m ²
COMMON AREA	8,70 m ²
TOTAL	688,19 m²

PLOT	2.366,00 m²
GARDEN	183,80 m ²
SWIMMING POOL	116,96 m ²
TOTAL USEFUL AREA	434,37 m²
DECREE 218/2005	

developed by
3 R I G H T .

These images are not contractual but only for illustrative purposes. The images are subject to technical, legal or commercial modifications approved by the project management or the competent authority. The 3D images corresponding to the facades, common elements, and the rest of the spaces are merely indicative and will be subject to verification or Modification in the technical projects. The furniture of the 3D images is not included and the equipment of the villas will be indicated in the corresponding building and quality specifications. The energy certification corresponds with the one established in the project in process. All the information and documentation will be provided according to the terms established in the Royal Decree 515/1989 and in the rest of the autonomous or state regulations currently in force that could complement the Mentioned Decree.



Nº13 MALAQUITA FIRST FLOOR

LIVING AREA

ACCESS	4,88 m ²
MAIN HALL	12,72 m ²
STAIRS	6,76 m ²
LOUNGE- DINING-KITCHEN	96,03 m ²
BATHROOM 1	5,78 m ²
BEDROOM 1	12,46 m ²
TOTAL	138,63 m²

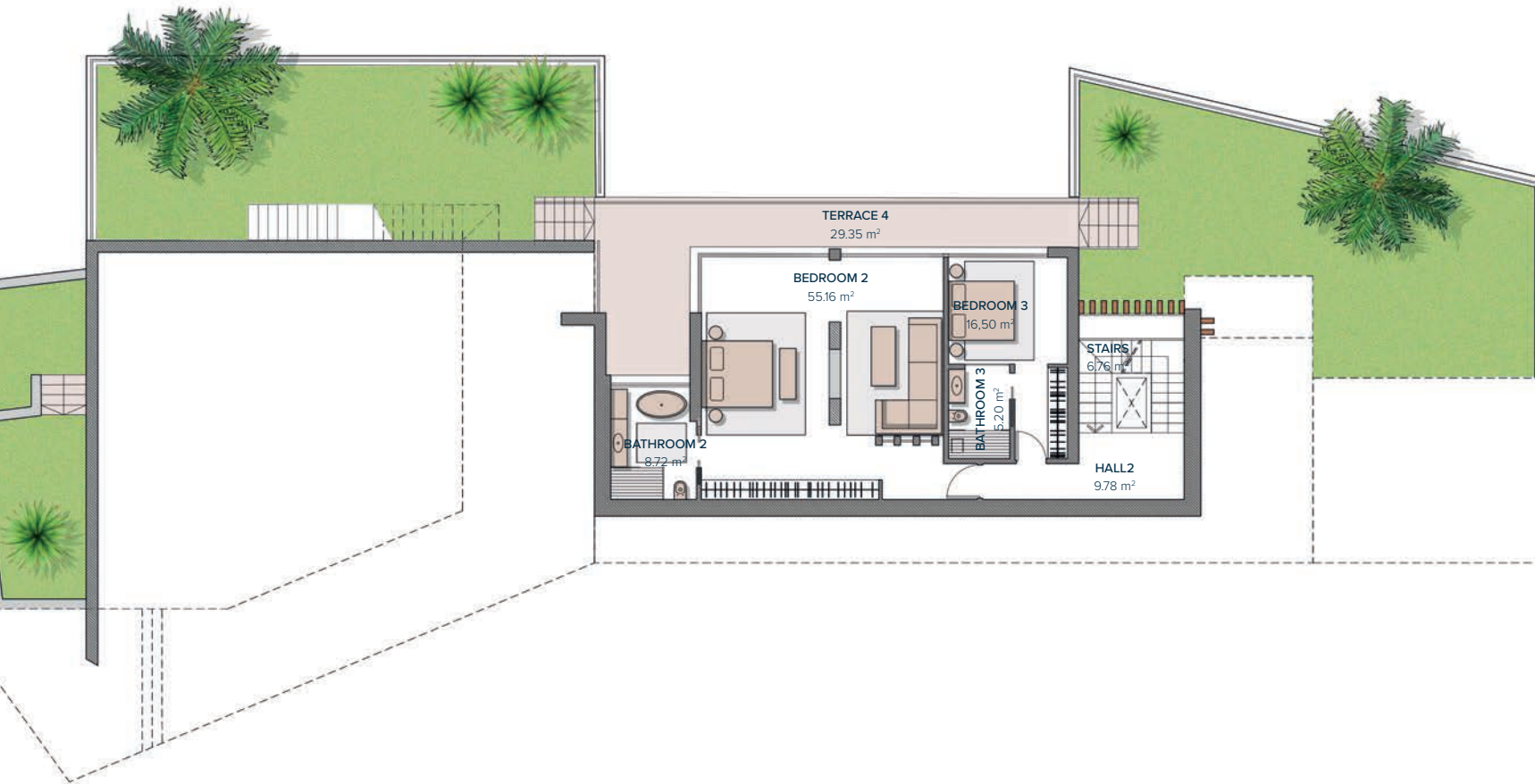
PERGOLAS & TERRACES

PARKING (PERGOLA)	39,00 m ²
TERRACE 1	6,64 m ²
PERGOLA 1	42,92 m ²
TERRACE 2	30,38 m ²
TERRACE 3	40,95 m ²
TOTAL	159,89 m²

developed by
3 R I G H T .

Entrance	1
	0
	-1





Nº13 MALAQUITA

GROUND FLOOR

BEDROOMS

HALL 2	9,78 m ²
STAIRS	6,76 m ²
BATHROOM 2	8,72 m ²
BEDROOM 2	55,16 m ²
BATHROOM 3	5,20 m ²
BEDROOM 3	16,50 m ²
TOTAL	102,12 m²

PERGOLAS & TERRACES

TERRACE 4	29,35 m ²
TOTAL	29,35 m²

developed by
3 BRIGHT.

Entrance

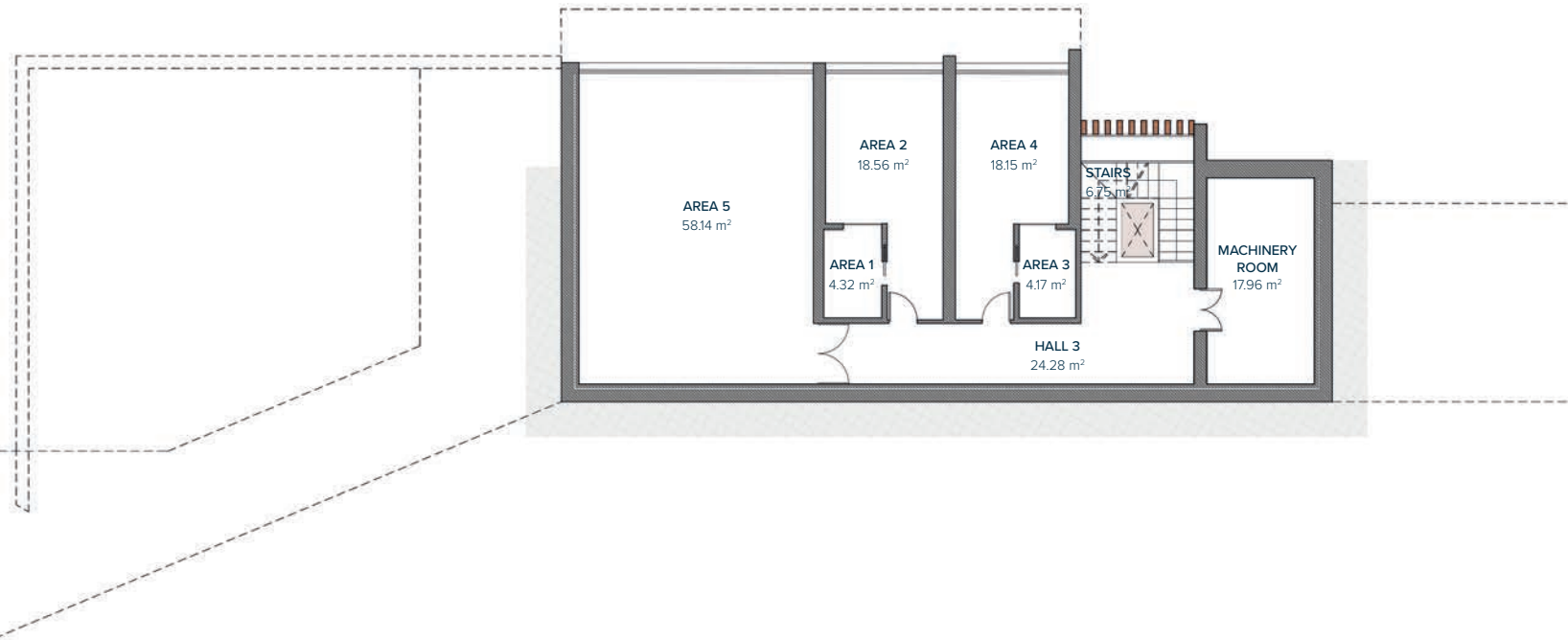
1
0
-1

0 1 2 3 4 5
GRAPHIC SCALE 1:100



Nº13 MALAQUITA

BASEMENT



HALL 3	24,28 m ²
AREA 1	4,32 m ²
AREA 2	18,56 m ²
AREA 3	4,17 m ²
AREA 4	18,15 m ²
STAIRS	6,75 m ²
MACHINERY ROOM	17,96 m ²
AREA 5	58,14 m ²
PATIO	1,80 m ²
TOTAL	154,13 m²

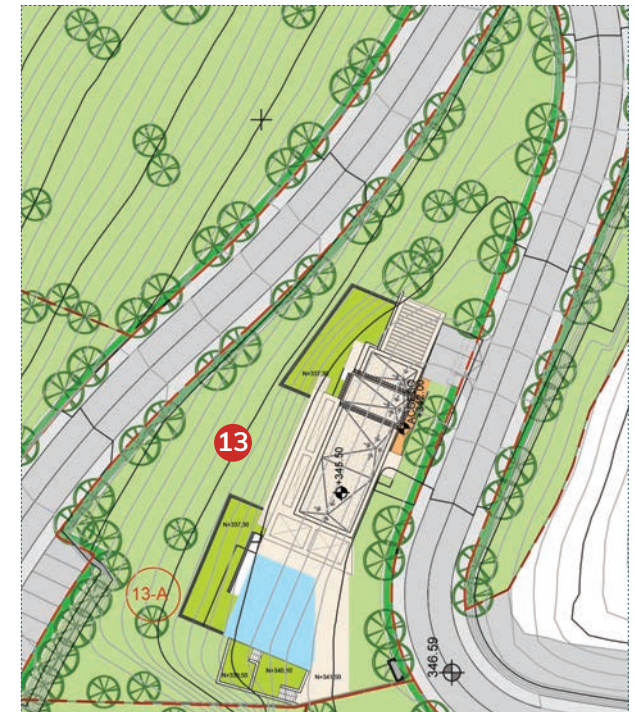
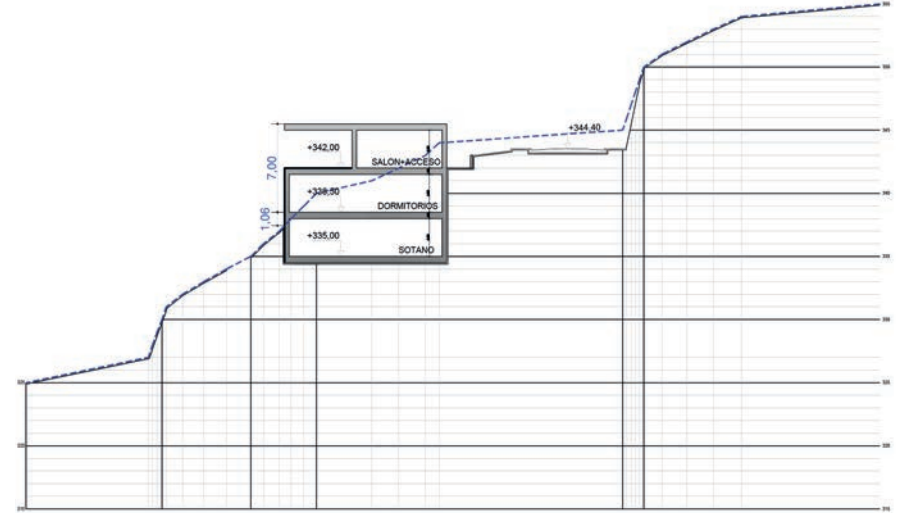


developed by
3 BRIGHT.

These images are not contractual but only for illustrative purposes. The images are subject to technical, legal or commercial modifications approved by the project management or the competent authority. The 3D images corresponding to the facades, common elements, and the rest of the spaces are merely indicative and will be subject to verification or Modification in the technical projects. The furniture of the 3D images is not included and the equipment of the villas will be indicated in the corresponding building and quality specifications. The energy certification corresponds with the one established in the project in process. All the information and documentation will be provided according to the terms established in the Royal Decree 515/1989 and in the rest of the autonomous or state regulations currently in force that could complement the Mentioned Decree.



Nº13 MALAQUITA



A nighttime photograph of a coastal city and sea. The foreground shows a densely populated city with many lights. The middle ground is a large body of water. In the background, there are mountains and a prominent rock formation on the right. The sky is a deep blue.

developed by
BRIGHT.

Tel: (+34) 648 981 111 | www.by-bright.com